

BOIS BLANC ISLAND, MICHIGAN

AL-10997 (FAA)

22363

WAAS CH 42735 W28A	APP CRS 282°	Rwy Idg TDZE 664 Apt Elev 664	3498 664 664
--	------------------------	---	---

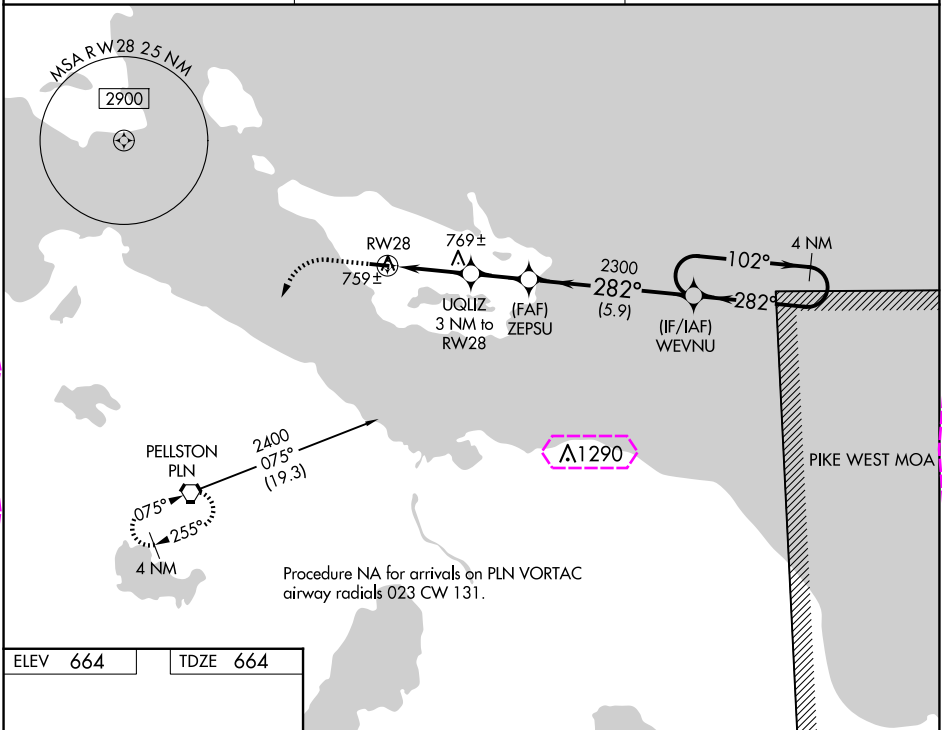
RNAV (GPS) RWY 28

BOIS BLANC ISLAND (6Y1)

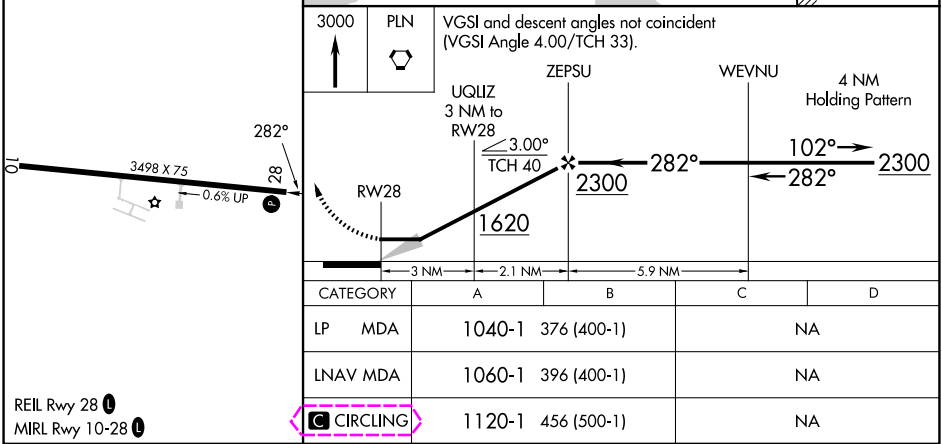
NA Use Cheboygan altimeter setting; when not received, Mackinac Island altimeter setting. DME/DME RNP-0.3 NA.

MISSED APPROACH: Climb to 3000 direct PELLSTON VORTAC and hold.

SLH AWOS-3 118.175	MINNEAPOLIS CENTER 134.6 354.05	CTAF 122.9 0
------------------------------	---	------------------------



ELEV 664	TDZE 664
----------	----------



REIL Rwy 28 0	MIRL Rwy 10-28 0	CIRCLING	1120-1	456 (500-1)	NA
---------------	------------------	-----------------	--------	-------------	----

BOIS BLANC ISLAND, MICHIGAN
Orig 13NOV14

45°46'N-84°30'W

RNAV (GPS) RWY 28

BOIS BLANC ISLAND, MICHIGAN

AL-10997 (FAA)

25219

WAAS CH 42735 W28A	APP CRS 282°	Rwy Ldg TDZE 664 Apt Elev 664
--	------------------------	---

RNAV (GPS) RWY 28

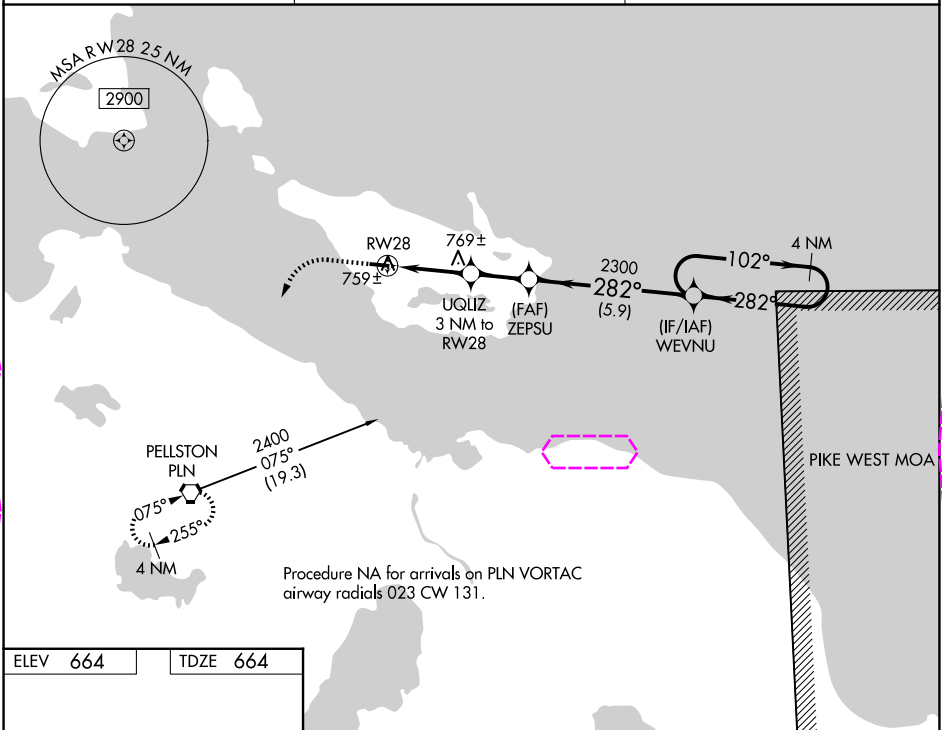
BOIS BLANC ISLAND (6Y1)

NA

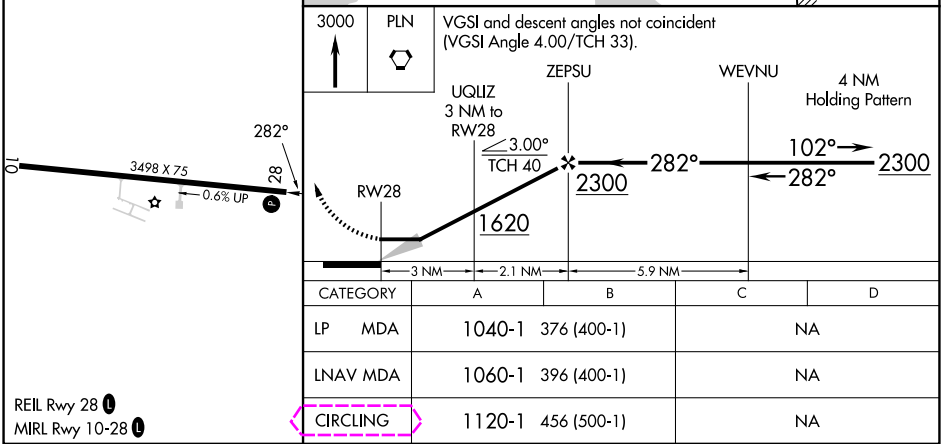
Use Cheboygan altimeter setting; when not received, Mackinac Island altimeter setting. DME/DME RNP-0.3 NA.

MISSED APPROACH: Climb to 3000 direct PELLSTON VORTAC and hold.

SLH AWOS-3 118.175	MINNEAPOLIS CENTER 134.6 354.05	CTAF 122.9 0
------------------------------	---	------------------------



ELEV 664	TDZE 664
----------	----------



BOIS BLANC ISLAND, MICHIGAN
Orig 13NOV14

45°46'N-84°30'W

BOIS BLANC ISLAND (6Y1)

RNAV (GPS) RWY 28

EC-1, 07 AUG 2025 to 04 SEP 2025

EC-1, 07 AUG 2025 to 04 SEP 2025