

BOIS BLANC ISLAND, MICHIGAN

AL-10997 (FAA)

22363

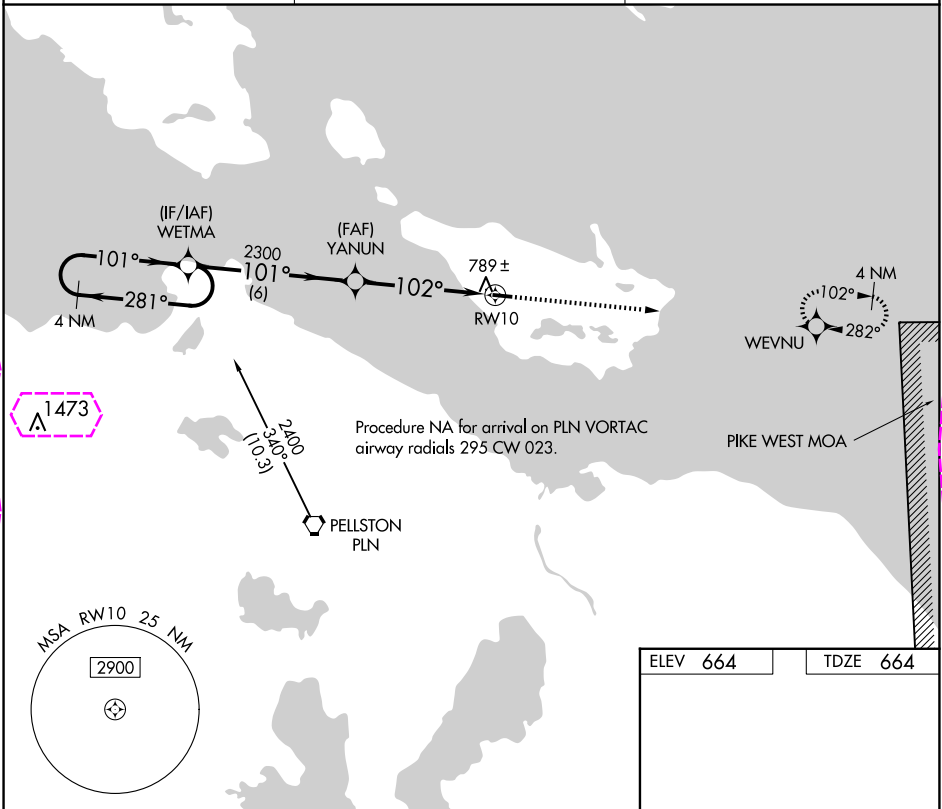
APP CRS	Rwy Idg	3498
102°	TDZE	664
	Apt Elev	664

# RNAV (GPS) RWY 10

BOIS BLANC ISLAND (6Y1)

NA	DME/DME RNP-0.3 NA. Use Cheboygan altimeter setting.	MISSED APPROACH: Climb to 4000 direct WEVNU and hold, continue climb-in-hold to 4000.
----	---	---

SLH AWOS-3 118.175	MINNEAPOLIS CENTER 134.6 354.05	CTAF 122.9
-----------------------	------------------------------------	---------------



4 NM Holding Pattern	WETMA	YANUN	4000	WEVNU
2300	281°	101°	2300	102°
	101°			
			3.00°	TCH 40
			6 NM	5 NM
CATEGORY	A	B	C	D
LNAV MDA	1060-1	396 (400-1)	NA	
CIRCLING	1120-1	456 (500-1)	NA	
				REIL Rwy 28
				MIRL Rwy 10-28

BOIS BLANC ISLAND, MICHIGAN  
Amdt 1 05JAN17

45°46'N-84°30'W

BOIS BLANC ISLAND (6Y1)  
RNAV (GPS) RWY 10

EC-1, 10 JUL 2025 to 07 AUG 2025

EC-1, 10 JUL 2025 to 07 AUG 2025

APP CRS	Rwy Ldg	3498
102°	TDZE	664
	Apt Elev	664

# RNAV (GPS) RWY 10

BOIS BLANC ISLAND (6Y1)

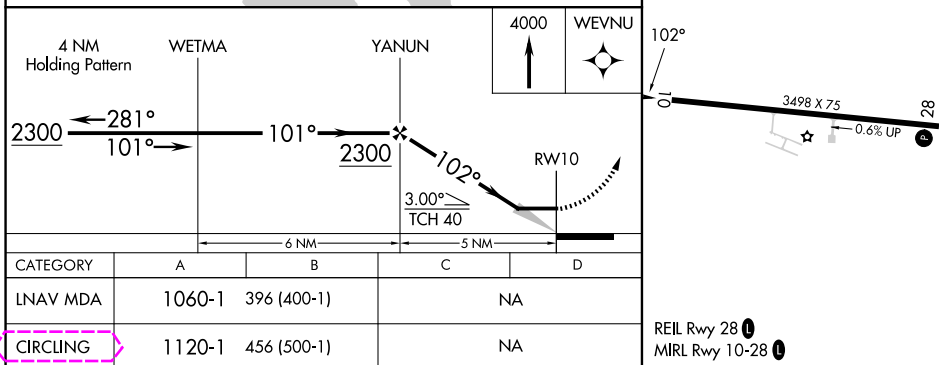
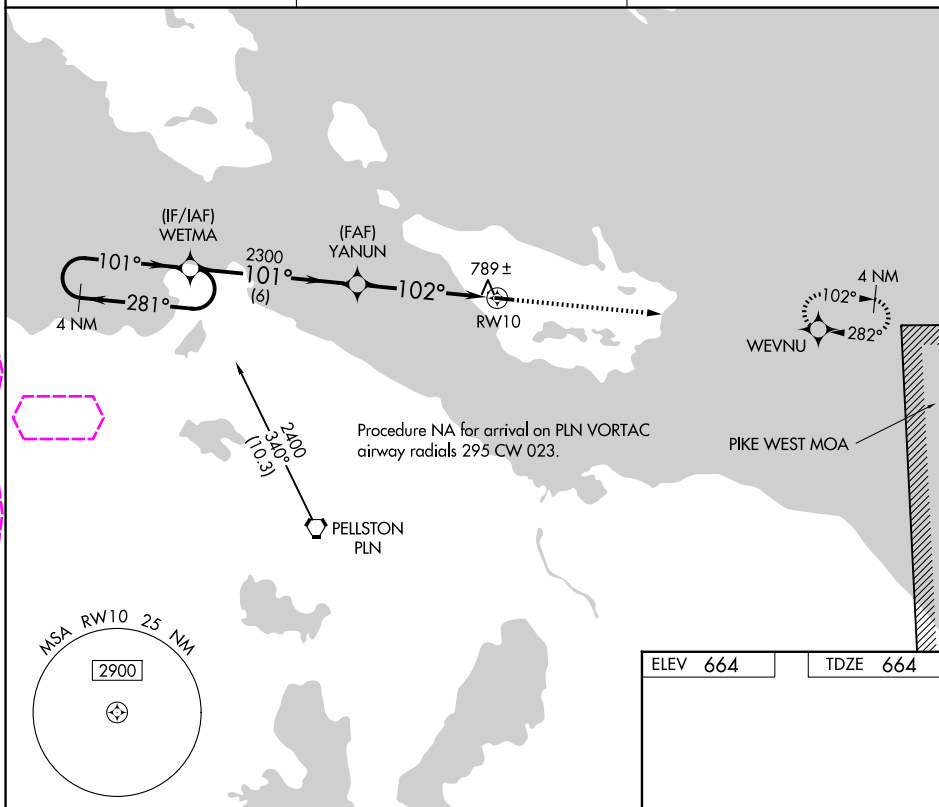
**T**  
**A** NA

DME/DME RNP-0.3 NA.  
Use Cheboygan altimeter setting.

**MISSED APPROACH:** Climb to 4000 direct WEVNU and hold, continue climb-in-hold to 4000.

SLH AWOS-3  
118.175

MINNEAPOLIS CENTER  
134.6 354.05

CTAF  
122.9 **L**

BOIS BLANC ISLAND, MICHIGAN  
Amdt 1 05JAN17

45°46'N-84°30'W

BOIS BLANC ISLAND (6Y1)  
RNAV (GPS) RWY 10

EC-1, 07 AUG 2025 to 04 SEP 2025

EC-1, 07 AUG 2025 to 04 SEP 2025