

ALMA, NEBRASKA

AL-10989 (FAA)

22083

WAAS CH 63137 W35A	APP CRS 354°	Rwy Idg TDZE Apt Elev	3200 2072 2073
--	------------------------	-----------------------------	---

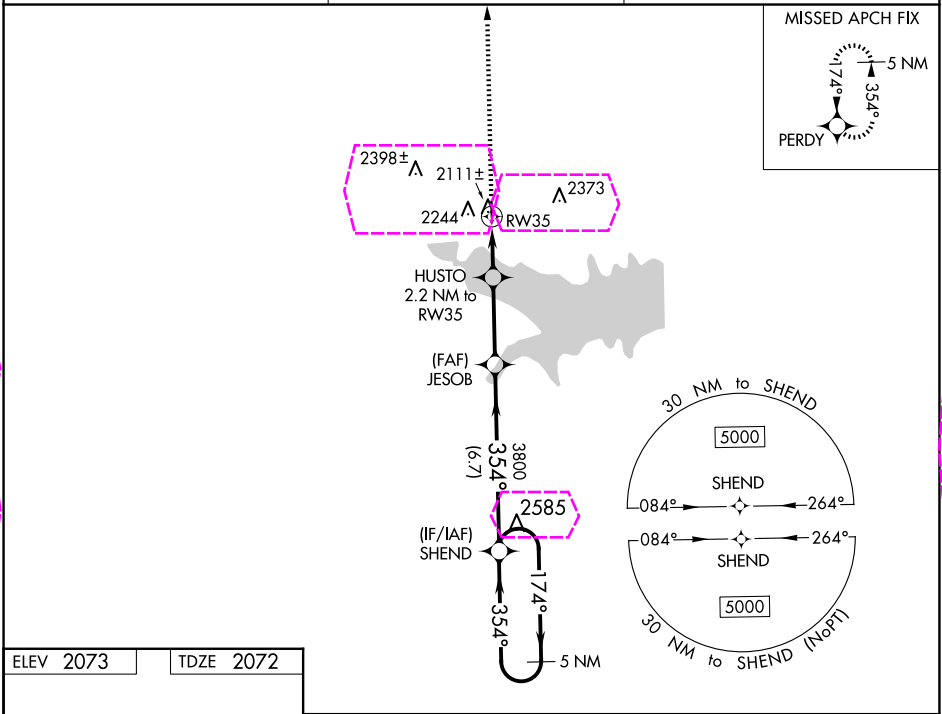
RNAV (GPS) RWY 35

ALMA MUNI (4D9)

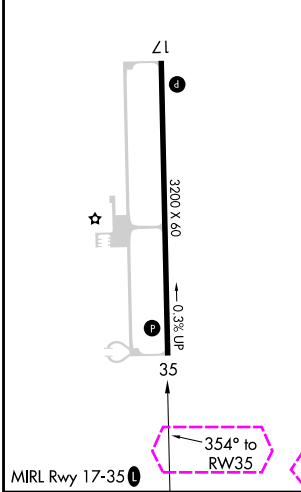
NA Baro-VNAV NA. Use Holdrege altimeter setting; when not received, use Kearney altimeter setting and increase all DA/MDA 20 feet and increase LPV and LNAV/VNAV all Cats visibility to 1¼ mile. DME/DME RNP-0.3 NA.

MISSED APPROACH: Climb to 5000 direct PERDY and hold.

HDE AWOS-3 121.325	DENVER CENTER 132.7 226.675	CTAF 122.9
------------------------------	---------------------------------------	----------------------



ELEV 2073	TDZE 2072
-----------	-----------



5000

↑

PERDY

✦

SHEND

5 NM Holding Pattern

*LNAV only

HUSTO 2.2 NM to RW35

JESOB 3800

RW35

2800*

3800

174° → 5000

← 354°

354°

GP 3.00° TCH 40

2.2 NM

3.1 NM

6.7 NM

CATEGORY	A	B	C	D
LPV DA	2403-1½	331 (400-1½)	NA	
LNAV/VNAV DA	2403-1½	331 (400-1½)	NA	
LNAV MDA	2460-1	388 (400-1)	NA	
CIRCLING	2680-1	607 (700-1)	NA	

ALMA, NEBRASKA
Orig 20AUG15

40°07'N-99°21'W

RNAV (GPS) RWY 35

ALMA MUNI (4D9)

NC-2, 10 JUL 2025 to 07 AUG 2025

NC-2, 10 JUL 2025 to 07 AUG 2025

ALMA, NEBRASKA

AL-10989 (FAA)

25219

WAAS CH 63137 W35A	APP CRS 354°	Rwy Ldg TDZE 2072 Apt Elev 2073
--	------------------------	---

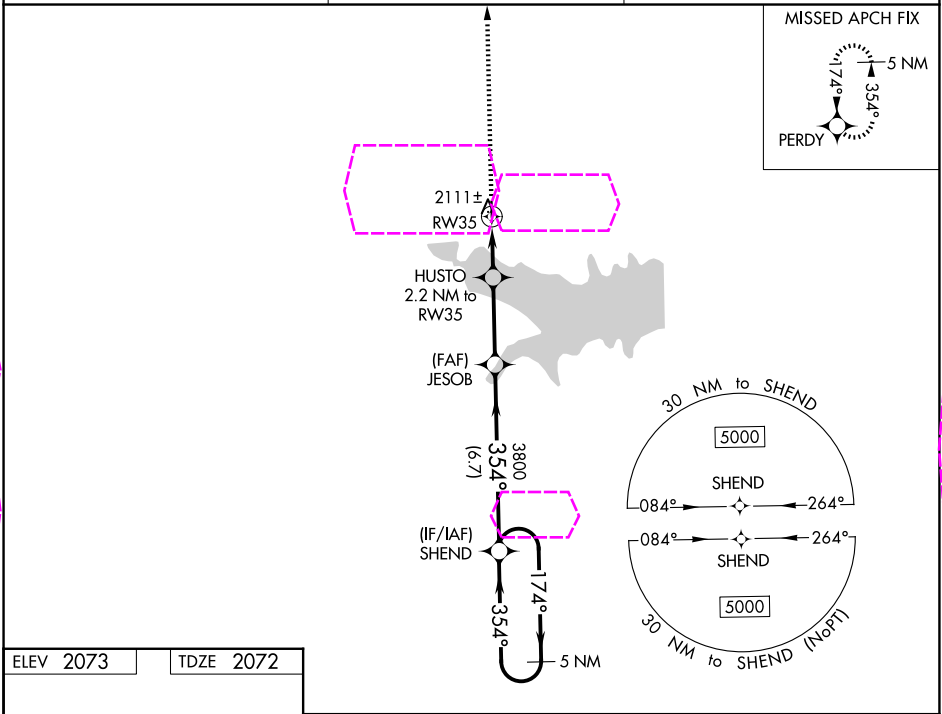
RNAV (GPS) RWY 35

ALMA MUNI (4D9)

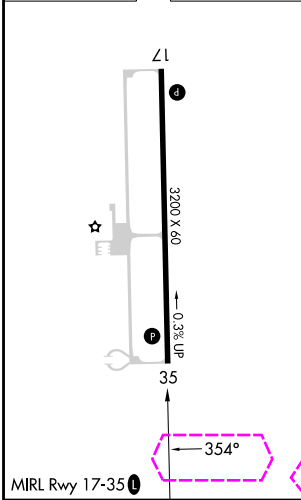
NA Baro-VNAV NA. Use Holdrege altimeter setting; when not received, use Kearney altimeter setting and increase all DA/MDA 20 feet and increase LPV and LNAV/VNAV all Cats visibility to 1¼ mile. DME/DME RNP-0.3 NA.

MISSED APPROACH: Climb to 5000 direct PERDY and hold.

HDE AWOS-3 121.325	DENVER CENTER 132.7 226.675	CTAF 122.9
------------------------------	---------------------------------------	----------------------



ELEV 2073	TDZE 2072
-----------	-----------



5000	PERDY	SHEND		5 NM Holding Pattern
*LNAV only	HUSTO 2.2 NM to RW35	JESOB 3800	174° → 5000 ← 354°	
RW35	2800*	3800	GP 3.00° TCH 40	
2.2 NM		3.1 NM	6.7 NM	
CATEGORY	A	B	C	D
LPV DA	2403-1½	331 (400-1½)	NA	
LNAV/VNAV DA	2403-1½	331 (400-1½)	NA	
LNAV MDA	2460-1	388 (400-1)	NA	
CIRCLING	2680-1	607 (700-1)	NA	

ALMA, NEBRASKA
Orig 20AUG15

40°07'N-99°21'W

RNAV (GPS) RWY 35

ALMA MUNI (4D9)

NC-2, 07 AUG 2025 to 04 SEP 2025

NC-2, 07 AUG 2025 to 04 SEP 2025