

ALMA, NEBRASKA

AL-10989 (FAA)

22083

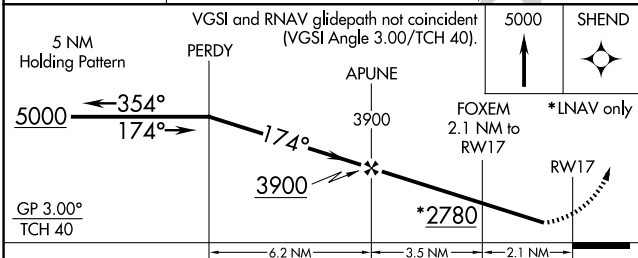
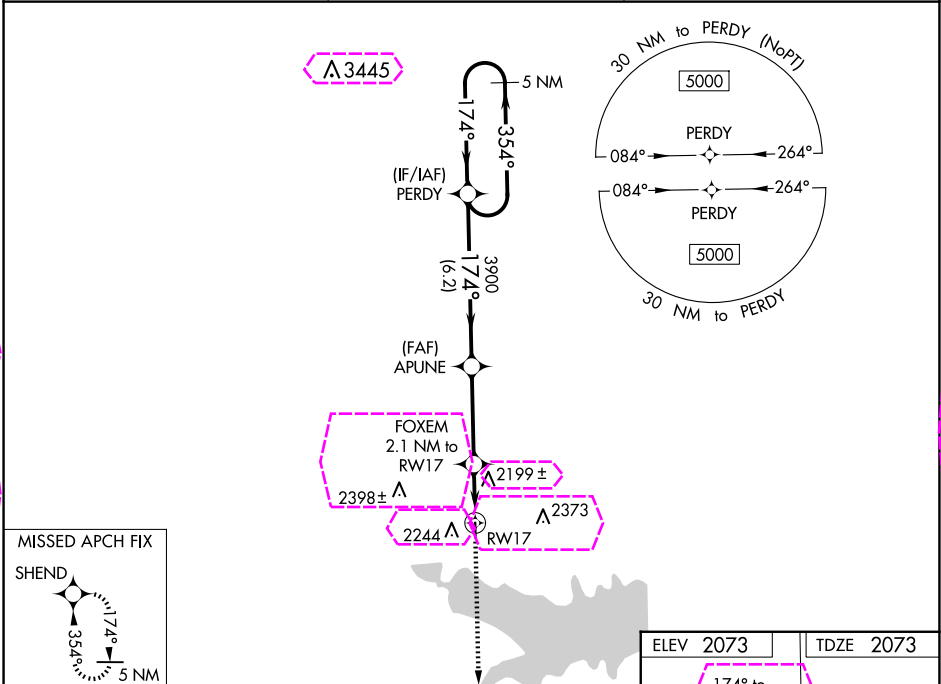
WAAS CH 58237 W17A	APP CRS 174°	Rwy Idg TDZE Apt Elev	3200 2073 2073
--	------------------------	-----------------------------	---

RNAV (GPS) RWY 17

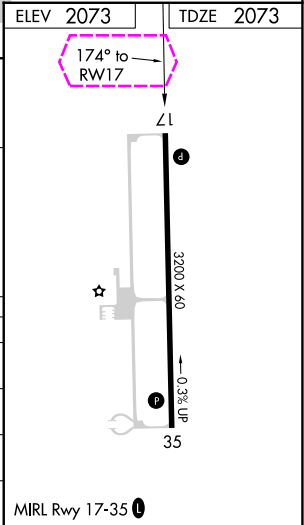
ALMA MUNI (4D9)

V Baro-VNAV NA. Use Holdrege altimeter setting; when not received, use Kearney altimeter setting and increase all DA/MDA 20 feet, and increase LNAV/VNAV all Cats visibility to 1¼ mile. DME/DME RNP-0.3 NA. Helicopter visibility reduction below ¾ SM NA.	MISSED APPROACH: Climb to 5000 direct SHEND and hold.
--	---

HDE AWOS-3 121.325	DENVER CENTER 132.7 226.675	CTAF 122.9
------------------------------	---------------------------------------	----------------------



CATEGORY	A	B	C	D
LPV DA	2404-1 ½	331 (400-1 ½)		NA
LNAV/VNAV DA	2407-1 ½	334 (400-1 ½)		NA
LNAV MDA	2540-1	467 (500-1)		NA
C CIRCLING	2680-1	607 (700-1)		NA



ALMA, NEBRASKA
Orig 20AUG15

40°07'N-99°21'W

RNAV (GPS) RWY 17

NC-2, 10 JUL 2025 to 07 AUG 2025

NC-2, 10 JUL 2025 to 07 AUG 2025

ALMA, NEBRASKA

AL-10989 (FAA)

25219

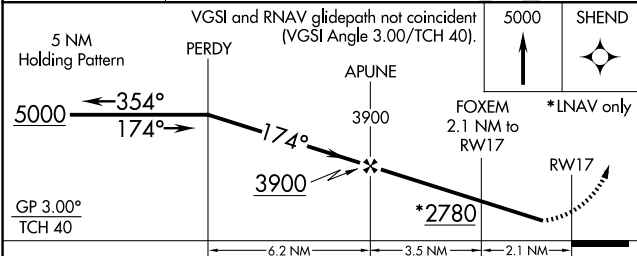
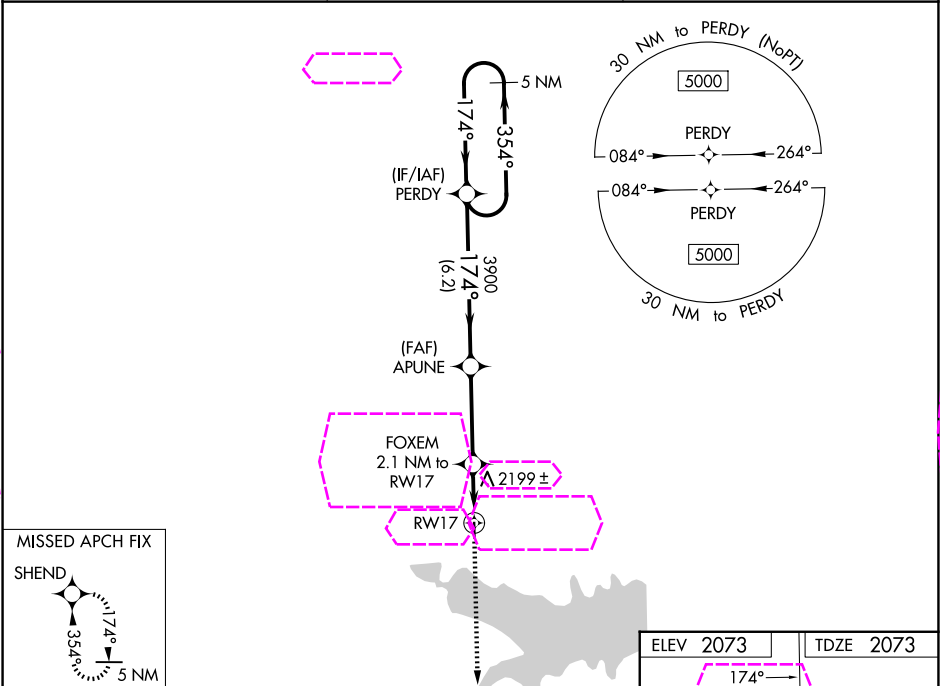
WAAS CH 58237 W17A	APP CRS 174°	Rwy Ldg TDZE Apt Elev	3200 2073 2073
--	------------------------	-----------------------------	---

RNAV (GPS) RWY 17

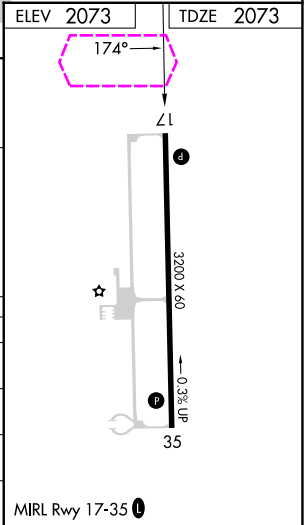
ALMA MUNI (4D9)

NA Baro-VNAV NA. Use Holdrege altimeter setting; when not received, use Kearney altimeter setting and increase all DA/MDA 20 feet, and increase LNAV/VNAV all Cats visibility to 1¼ mile. DME/DME RNP-0.3 NA. Helicopter visibility reduction below ¾ SM NA.	MISSED APPROACH: Climb to 5000 direct SHEND and hold.
---	---

HDE AWOS-3 121.325	DENVER CENTER 132.7 226.675	CTAF 122.90
------------------------------	---------------------------------------	-----------------------



CATEGORY	A	B	C	D
LPV DA	2404-1 ½	331 (400-1 ½)		NA
LNAV/VNAV DA	2407-1 ½	334 (400-1 ½)		NA
LNAV MDA	2540-1	467 (500-1)		NA
CIRCLING	2680-1	607 (700-1)		NA



ALMA, NEBRASKA
Orig 20AUG15

40°07'N-99°21'W

RNAV (GPS) RWY 17

NC-2, 07 AUG 2025 to 04 SEP 2025

NC-2, 07 AUG 2025 to 04 SEP 2025