

AKUTAN, ALASKA

AL-10983 (FAA)

25107

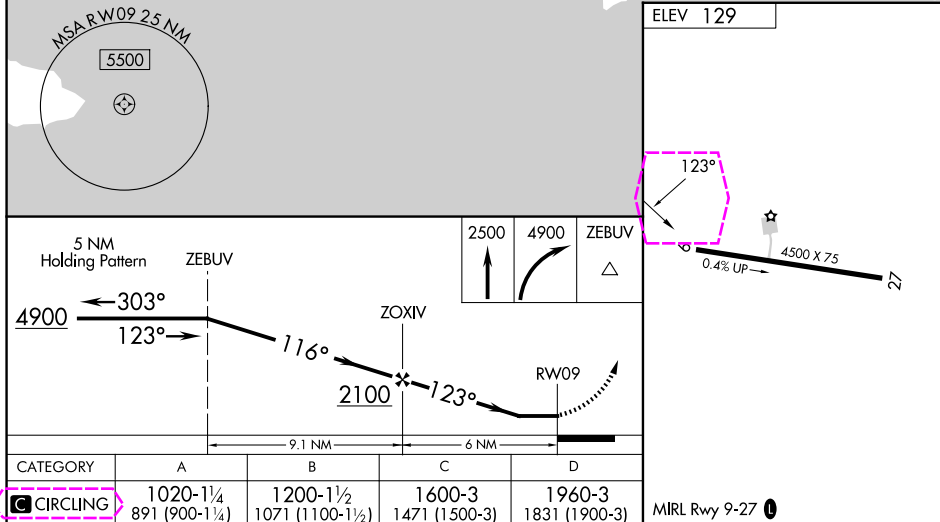
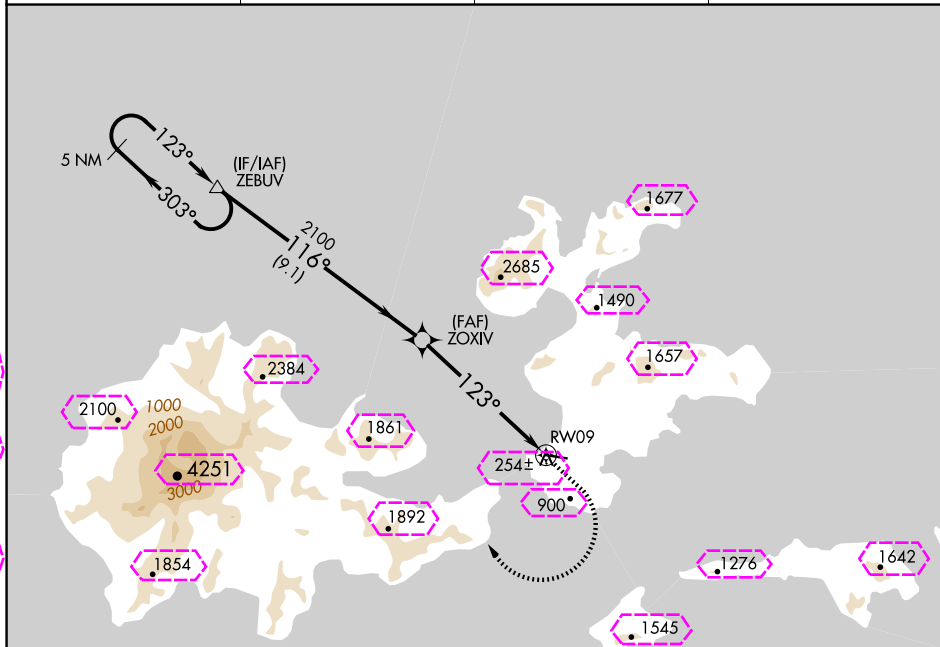
APP CRS 123°	Rwy Idg TDZE Apt Elev	N/A N/A 129
------------------------	-----------------------------	--------------------------

RNAV (GPS)-A

AKUTAN (7AK) (PAUT)

<p>⚠ When local altimeter setting not received, procedure NA. DME/DME RNP-0.3 NA. Procedure NA at night.</p>	<p>MISSED APPROACH: Climb to 2500 then climbing right turn to 4900 direct ZEBUV and hold.</p>
---	---

AWOS-3P 129.05	ANCHORAGE CENTER 121.4	GCO 130.3	CTAF 122.9
--------------------------	----------------------------------	---------------------	----------------------



AKUTAN, ALASKA
Amdt 1A 05MAR15

54°09'N-165°36'W

AKUTAN (7AK) (PAUT)
RNAV (GPS)-A

AK, 12 JUN 2025 to 07 AUG 2025

AK, 12 JUN 2025 to 07 AUG 2025

AKUTAN, ALASKA

AL-10983 (FAA)

25219

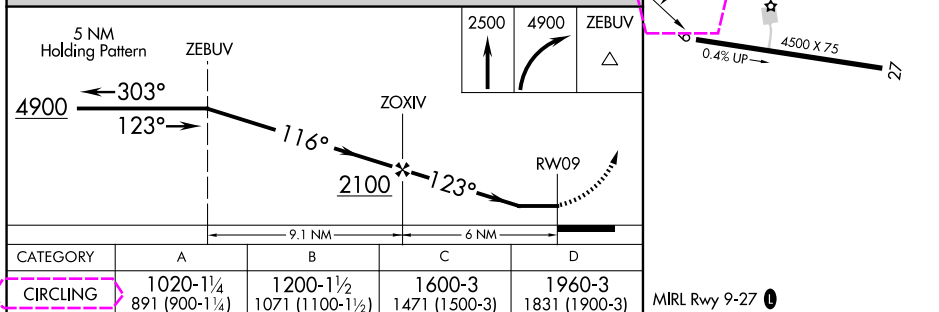
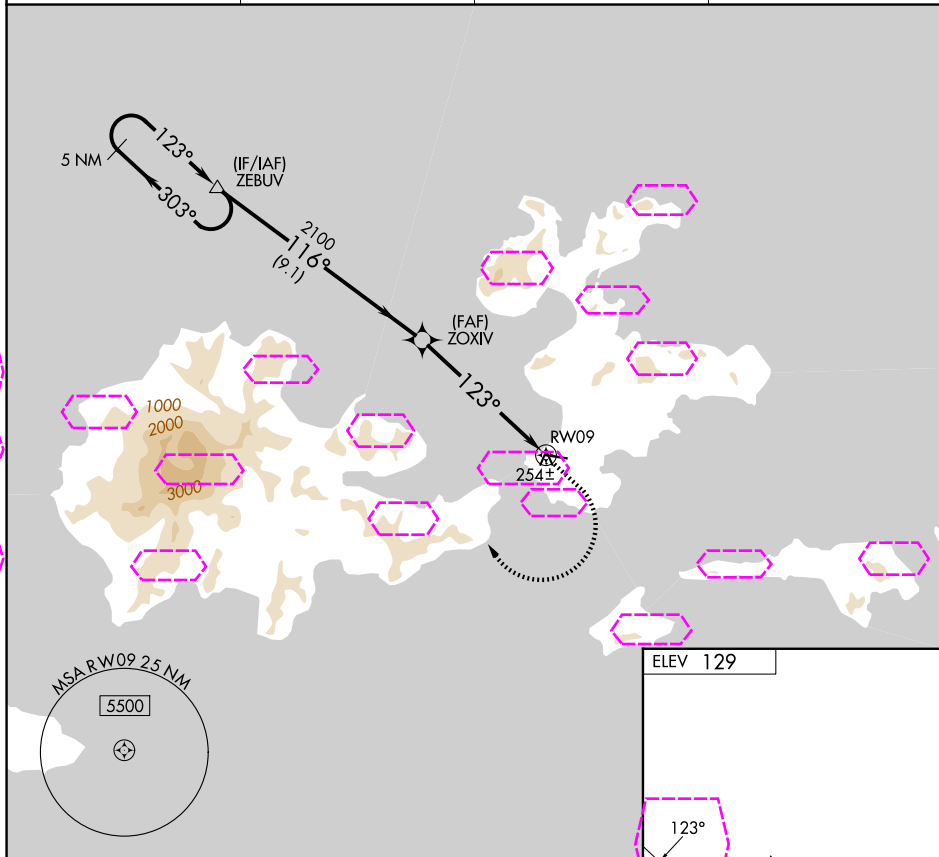
APP CRS 123°	Rwy Ldg TDZE Apt Elev	N/A N/A 129
------------------------	-----------------------------	--------------------------

RNAV (GPS)-A

AKUTAN (7AK) (PAUT)

<p>⚠ When local altimeter setting not received, procedure NA. DME/DME RNP-0.3 NA. Procedure NA at night.</p>	<p>MISSED APPROACH: Climb to 2500 then climbing right turn to 4900 direct ZEBUV and hold.</p>
---	---

AWOS-3P 129.05	ANCHORAGE CENTER 121.4	GCO 130.3	CTAF 122.9
--------------------------	----------------------------------	---------------------	----------------------



AKUTAN, ALASKA

Amdt 1A 05MAR15

54°09'N-165°36'W

AKUTAN (7AK) (PAUT)

RNAV (GPS)-A