

AKUTAN, ALASKA

AL-10983 (FAA)

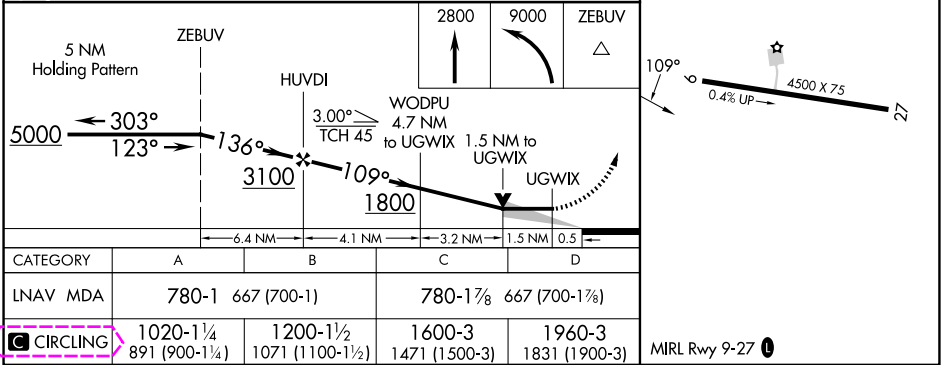
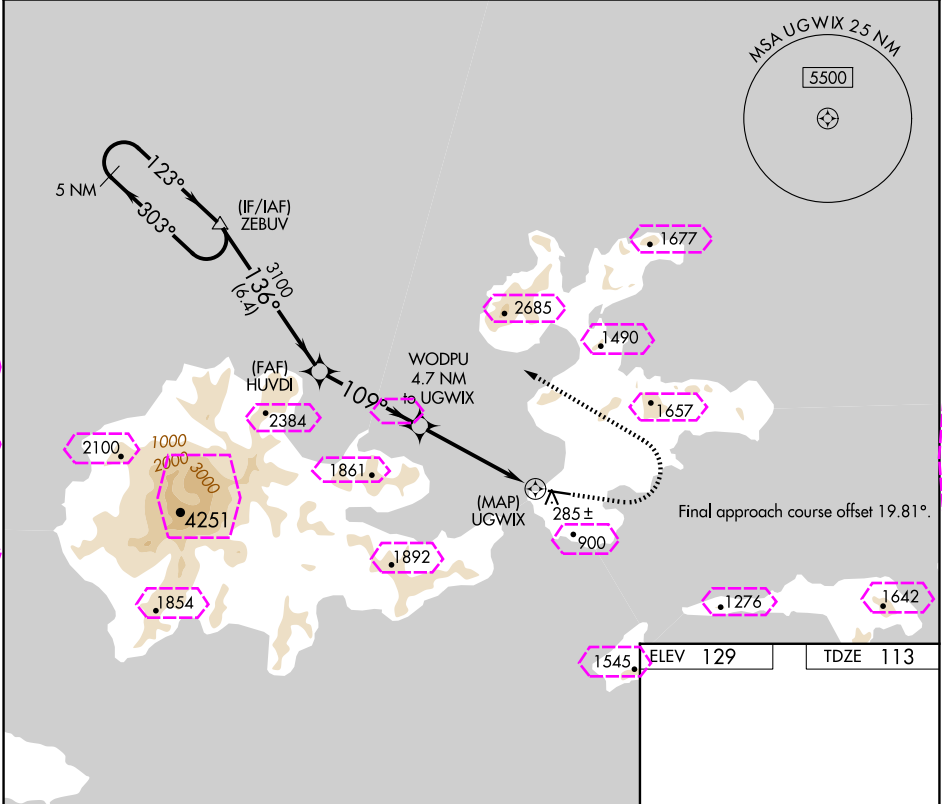
25107

APP CRS	Rwy Idg	4500
109°	TDZE	113
	Apt Elev	129

RNAV (GPS) RWY 9  
AKUTAN (7AK)(PAUT)

	DME/DME RNP-0.3 NA. Procedure NA at night.	MISSED APPROACH: Climb to 2800 then climbing left turn to 9000 direct ZEBUV and hold, continue climb-in-hold to 9000.
--	-----------------------------------------------	-----------------------------------------------------------------------------------------------------------------------

AWOS-3P 129.05	ANCHORAGE CENTER 121.4	GCO 130.3	CTAF 122.9
-------------------	---------------------------	--------------	---------------



AKUTAN, ALASKA

AL-10983 (FAA)

25219

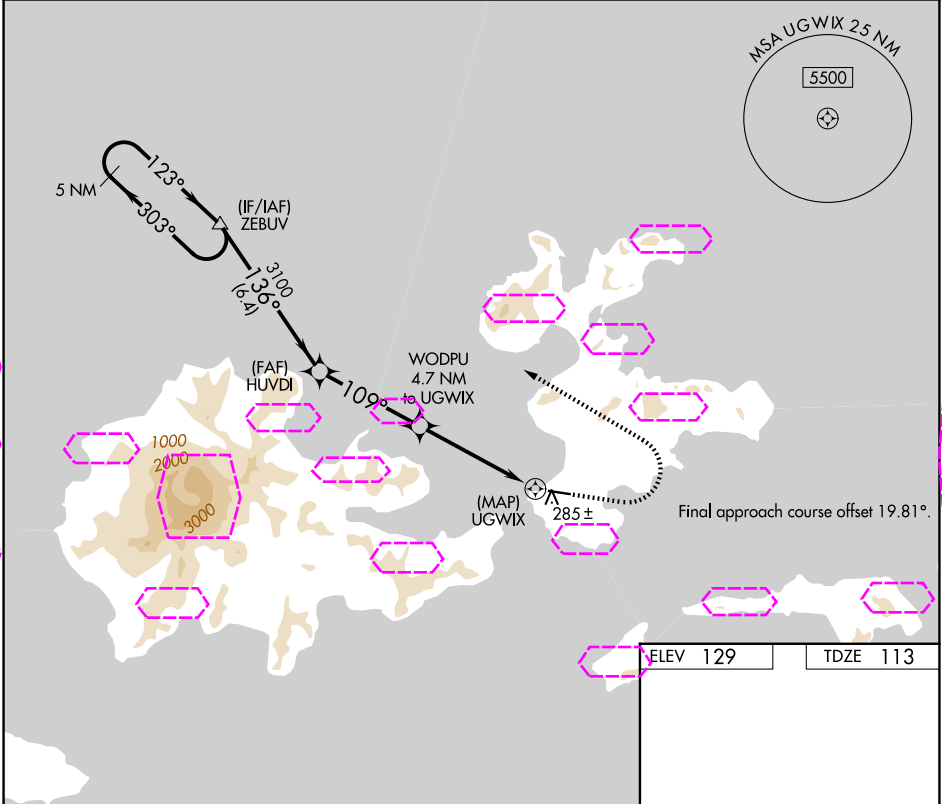
APP CRS	Rwy Ldg	4500
109°	TDZE	113
	Apt Elev	129

# RNAV (GPS) RWY 9

AKUTAN (7AK)(PAUT)

	DME/DME RNP-0.3 NA. Procedure NA at night.	MISSED APPROACH: Climb to 2800 then climbing left turn to 9000 direct ZEBUV and hold, continue climb-in-hold to 9000.
--	-----------------------------------------------	-----------------------------------------------------------------------------------------------------------------------

AWOS-3P 129.05	ANCHORAGE CENTER 121.4	GCO 130.3	CTAF 122.9 0
-------------------	---------------------------	--------------	-----------------



5 NM Holding Pattern		ZEBUV		2800 ↑		9000 ↶		ZEBUV △		109° ↘		4500 X 75 0.4% UP ↗		27		
5000 ← 303° → 123°		136°		3.00° TCH 45		WODPU 4.7 NM to UGWIX		1.5 NM to UGWIX		UGWIX						
		3100		109°		1800										
		6.4 NM		4.1 NM		3.2 NM		1.5 NM		0.5						
CATEGORY	A		B		C		D									
LNNAV MDA	780-1		667 (700-1)		780-1 7/8		667 (700-1 7/8)									
CIRCLING	1020-1 1/4 891 (900-1 1/4)		1200-1 1/2 1071 (1100-1 1/2)		1600-3 1471 (1500-3)		1960-3 1831 (1900-3)									
														MIRL Rwy 9-27 0		

AKUTAN, ALASKA  
Orig 13NOV14

54°09'N-165°36'W

# RNAV (GPS) RWY 9

AKUTAN (7AK)(PAUT)

AK, 07 AUG 2025 to 02 OCT 2025

AK, 07 AUG 2025 to 02 OCT 2025