

AKUTAN, ALASKA

AL-10983 (FAA)

25107

APP CRS	Rwy Idg	4500
269°	TDZE	129
	Apt Elev	129

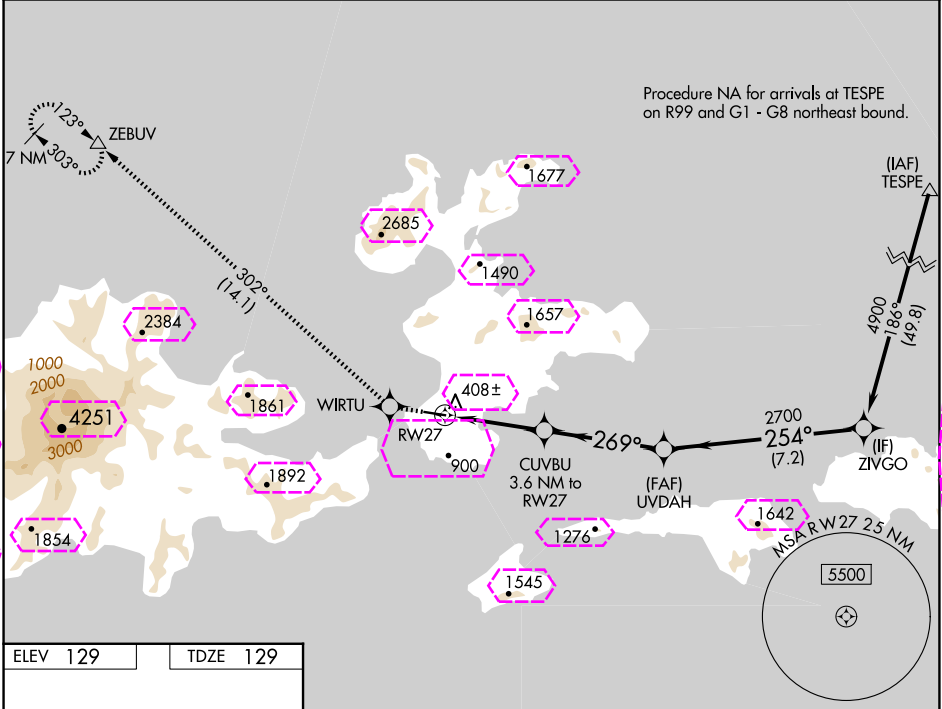
# RNAV (GPS) RWY 27

AKUTAN (7AK)(PAUT)

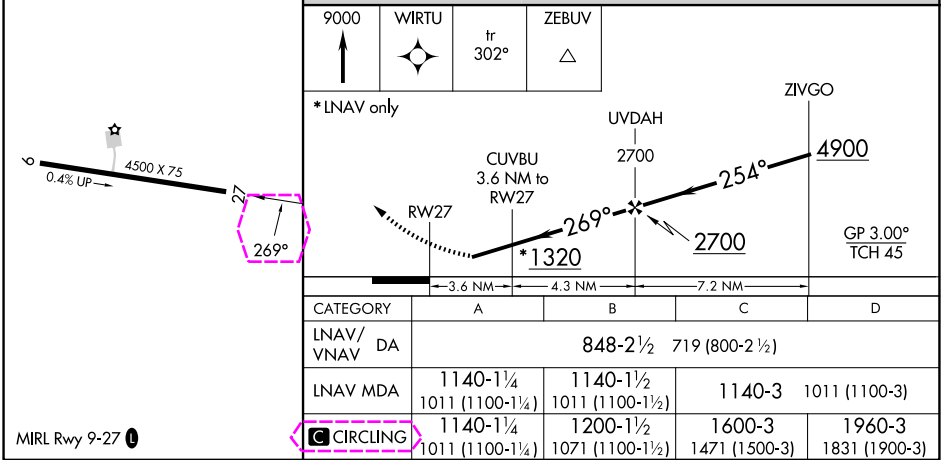
For uncompensated Baro-VNAV systems, LNAV/VNAV NA below -19°C (-2°F) or above 54°C (130°F). DME/DME RNP-0.3 NA. Visibility reduction by helicopters below 1 SM NA. Procedure NA at night.

MISSED APPROACH: Climb to 9000 direct WIRTU and on track 302° to ZEBUV and hold, continue climb-in-hold to 9000.

AWOS-3P 129.05	ANCHORAGE CENTER 121.4	GCO 130.3	CTAF 122.9
-------------------	---------------------------	--------------	---------------



ELEV 129	TDZE 129
----------	----------



AKUTAN, ALASKA  
Amdt 1 13NOV14

54°09'N-165°36'W

# RNAV (GPS) RWY 27

AKUTAN (7AK)(PAUT)

AKUTAN, ALASKA

AL-10983 (FAA)

25219

APP CRS	Rwy Ldg	4500
269°	TDZE	129
	Apt Elev	129

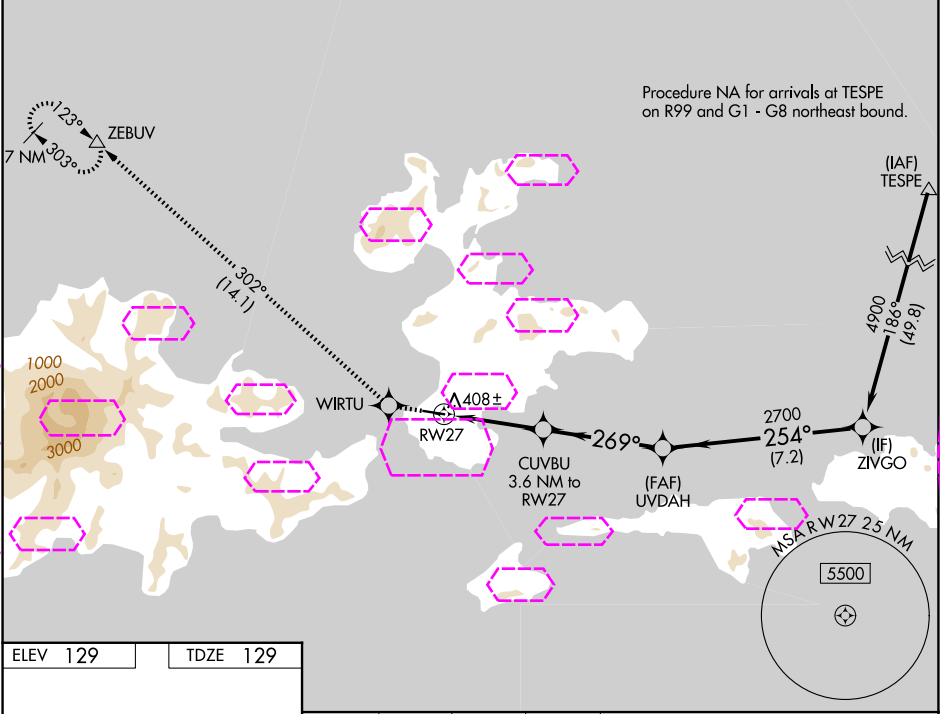
# RNAV (GPS) RWY 27

AKUTAN (7AK)(PAUT)

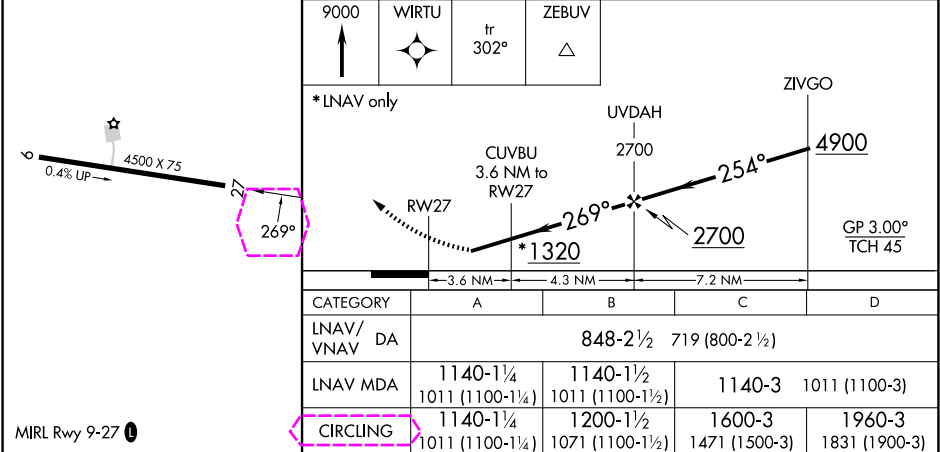
For uncompensated Baro-VNAV systems, LNAV/VNAV NA below -19°C (-2°F) or above 54°C (130°F). DME/DME RNP-0.3 NA. Visibility reduction by helicopters below 1 SM NA. Procedure NA at night.

MISSED APPROACH: Climb to 9000 direct WIRTU and on track 302° to ZEBUV and hold, continue climb-in-hold to 9000.

AWOS-3P 129.05	ANCHORAGE CENTER 121.4	GCO 130.3	CTAF 122.9
-------------------	---------------------------	--------------	---------------



ELEV 129	TDZE 129
----------	----------



AKUTAN, ALASKA  
Amdt 1 13NOV14

54°09'N-165°36'W

# RNAV (GPS) RWY 27

AKUTAN (7AK)(PAUT)