

CLEVELAND, TENNESSEE

AL-10974 (FAA)

22223

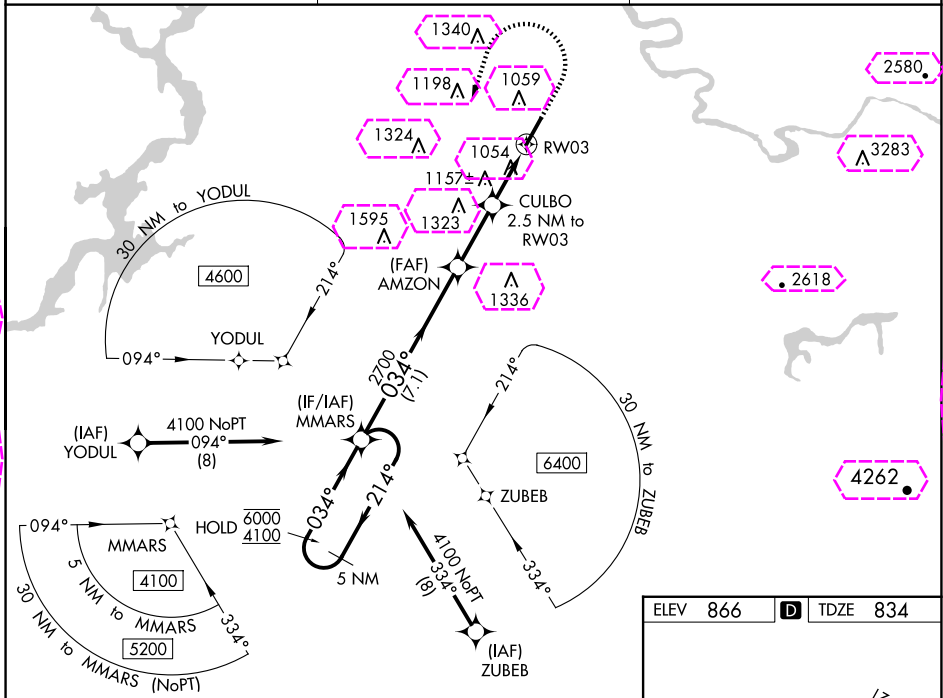
WAAS CH 99632 W03A	APP CRS 034°	Rwy Idg TDZE Apt Elev 6200 834 866
--	------------------------	--

RNAV (GPS) RWY 3

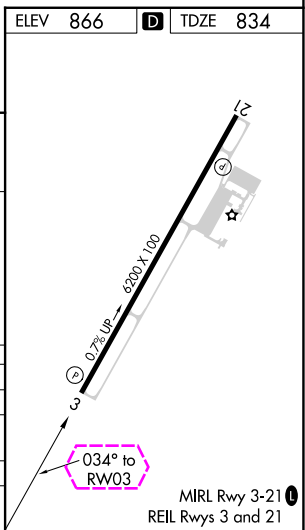
CLEVELAND RGNL JETPORT (RZR)

RNP APCH - GPS.	MISSED APPROACH: Climb to 1800 then climbing left turn to 4100 direct MMARS and hold, continue climb-in-hold to 4100.
<p>▼ Rwy 3 helicopter visibility reduction below ¾ SM NA.</p> <p>▲ For uncompensated Baro-VNAV systems, LNAV/VNAV NA below -16°C or above 54°C.</p>	

AWOS-3 120.475	CHATTANOOGA APP CON★ 125.1	UNICOM 122.7 (CTAF) 0
--------------------------	--------------------------------------	---------------------------------



5 NM Holding Pattern		VGSI and RNAV glidepath not coincident (VGSI Angle 3.40/TCH 46).		1800	4100	MMARS
6000 ← 214°		MMARS		AMZON		CULBO
4100 → 034°		2700		2700		2.5 NM to RW03
GP 3.40° TCH 55		034°		*1780		*1.5 NM to RW03
		7.1 NM		2.5 NM		1 NM
						1.5 NM
CATEGORY	A	B	C	D		
LPV DA	1034-¾	200 (200-¾)	1104-7/8	270 (300-7/8)		
LNAV/VNAV DA	1437-1¾		603 (600-1¾)			
LNAV MDA	1420-1	586 (600-1)	1420-1¾	586 (600-1¾)		
CIRCLING	1460-1	594 (600-1)	1580-2	1780-3		
			714 (800-2)	914 (1000-3)		



CLEVELAND, TENNESSEE
Amdt 2C 11AUG22

35°13'N-84°48'W

CLEVELAND RGNL JETPORT (RZR)
RNAV (GPS) RWY 3

CLEVELAND, TENNESSEE

AL-10974 (FAA)

25219

WAAS CH 99632 W03A	APP CRS 034°	Rwy Ldg TDZE Apt Elev 6200 834 866
--	------------------------	--

RNAV (GPS) RWY 3

CLEVELAND RGNL JETPORT (RZR)

RNP APCH - GPS.

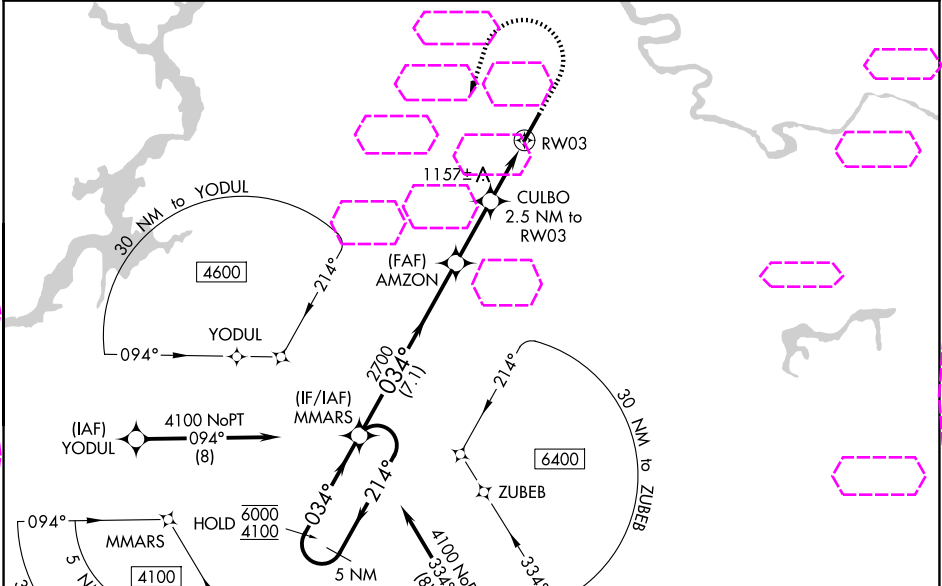
▼

⚠

Rwy 3 helicopter visibility reduction below $\frac{3}{4}$ SM NA.
For uncompensated Baro-VNAV systems, LNAV/VNAV NA below -16°C or above 54°C.

MISSED APPROACH: Climb to 1800 then climbing left turn to 4100 direct MMARS and hold, continue climb-in-hold to 4100.

AWOS-3 120.475	CHATTANOOGA APP CON★ 125.1	UNICOM 122.7 (CTAF) 0
--------------------------	--------------------------------------	---------------------------------



5 NM Holding Pattern

MMARS

AMZON

CULBO

RW03

VGSI and RNAV glidepath not coincident (VGSI Angle 3.40/TCH 46).
GP 3.40° TCH 55

6000
4100

214°

034°

034°

2700

1780

1800

4100

MMARS

*LNAV only.

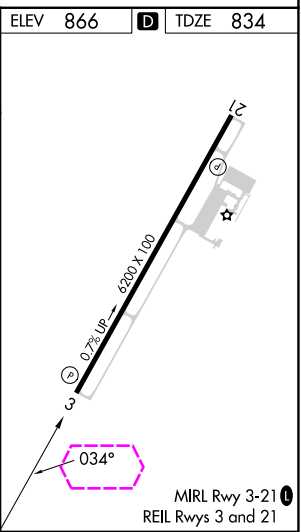
7.1 NM

2.5 NM

1 NM

1.5 NM

CATEGORY	A	B	C	D
LPV DA	1034- $\frac{3}{4}$	200 (200- $\frac{3}{4}$)	1104- $\frac{7}{8}$	270 (300- $\frac{7}{8}$)
LNAV/VNAV DA	1437-1 $\frac{3}{4}$ 603 (600-1 $\frac{3}{4}$)			
LNAV MDA	1420-1	586 (600-1)	1420-1 $\frac{3}{4}$	586 (600-1 $\frac{3}{4}$)
CIRCLING	1460-1	594 (600-1)	1580-2 714 (800-2)	1780-3 914 (1000-3)



SE-1, 07 AUG 2025 to 04 SEP 2025

SE-1, 07 AUG 2025 to 04 SEP 2025

CLEVELAND, TENNESSEE
Amdt 2C 11AUG22

35°13'N-84°48'W

CLEVELAND RGNL JETPORT (RZR)
RNAV (GPS) RWY 3