

WAAS CH 45731 W21A	APP CRS 214°	Rwy Idg TDZE Apt Elev	6200 866 866
--	------------------------	-----------------------------	---

RNAV (GPS) RWY 21
CLEVELAND RGNL JETPORT (RZR)

RNP APCH.

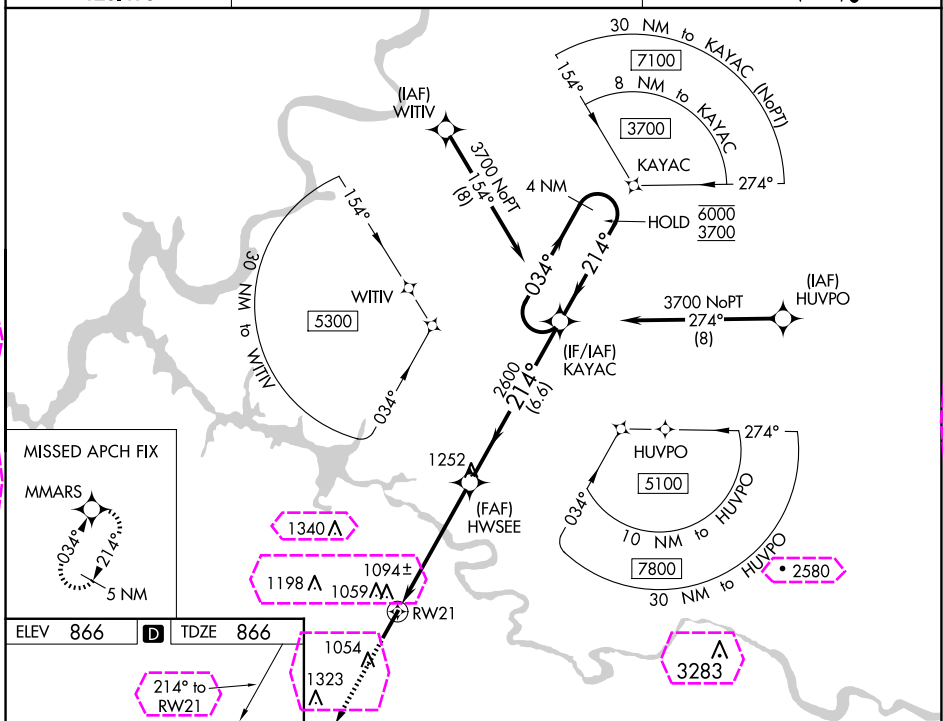


For uncompensated Baro-VNAV systems,
LNAV/VNAV NA below -16°C or above 54°C.

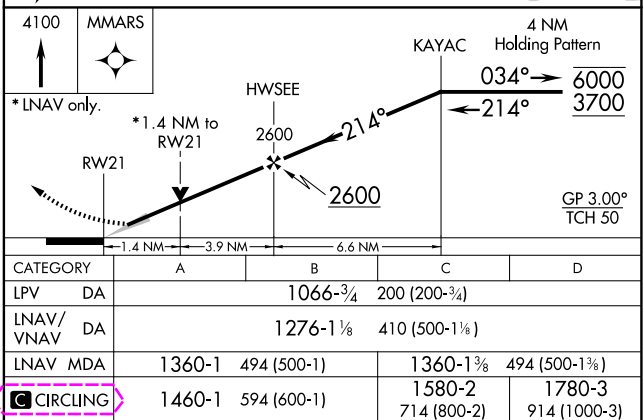
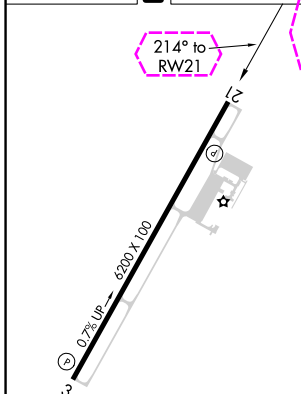
MISSED APPROACH: Climb to 4100 direct MMARS and hold, continue climb-in-hold to 4100.

AWOS-3
120,475

CHATTANOOGA APP CON★
125.1

UNICOM
122.7 (CTAF) **L**

ELEV 866	D	TDZE 866
----------	----------	----------



CLEVELAND, TENNESSEE
Amdt 2A 28FEB19

35°13'N-84°48'W

CLEVELAND RGNL JETPORT (RZR)
RNAV (GPS) RWY 21

CLEVELAND, TENNESSEE


AL-10974 (FAA)


25219

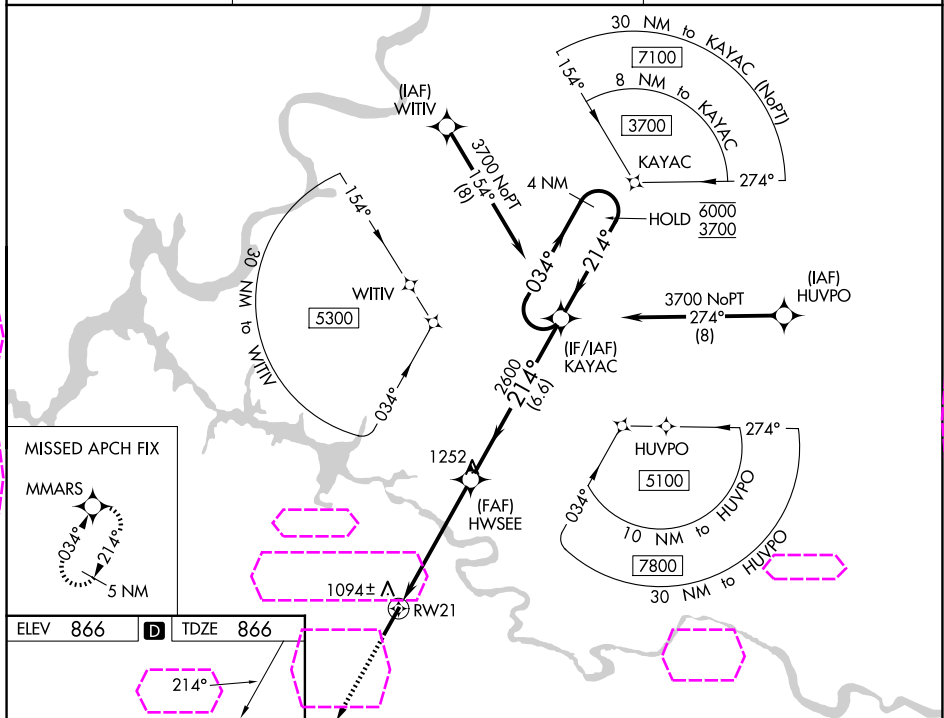
WAAS CH 45731 W21A	APP CRS 214°	Rwy Ldg TDZE 866 Apt Elev 866
--	------------------------	---

RNAV (GPS) RWY 21

CLEVELAND RGNL JETPORT (RZR)

RNP APCH.	MISSED APPROACH: Climb to 4100 direct MMARS and hold, continue climb-in-hold to 4100.
 For uncompensated Baro-VNAV systems, LNAV/VNAV NA below -16°C or above 54°C.	

AWOS-3 120.475	CHATTANOOGA APP CON★ 125.1	UNICOM 122.7 (CTAF) 
--------------------------	--------------------------------------	---



A diagram of a runway labeled RWY 21. The runway is oriented diagonally. A dimension line indicates a width of 2140 x 100. A slope indicator shows a 0.7% up gradient. A star symbol is located at the end of the runway.

A diagram of the approach path. It starts at 4100 MMARS, indicated by an upward arrow. The path is a series of segments: a 1.4 NM segment to RWY 21, a 3.9 NM segment to HWSEE (2600), and a 6.6 NM segment to KAYAC. The path is labeled with 214° and 2600. A 4 NM Holding Pattern is shown at KAYAC with a 034° heading and altitudes of 6000 and 3700. A GP 3.00° TCH 50 is also indicated.

* LNAV only.					
CATEGORY		A	B	C	D
LPV DA		1066-3/4		200 (200-3/4)	
LNAV/VNAV DA		1276-1 1/2		410 (500-1 1/2)	
LNAV MDA		1360-1	494 (500-1)	1360-1 3/8	494 (500-1 3/8)
CIRCLING		1460-1	594 (600-1)	1580-2 714 (800-2)	1780-3 914 (1000-3)

MIRL Rwy 3-21
REIL Rwy 3 and 21

CLEVELAND, TENNESSEE

Amdt 2A 28FEB19

35°13'N-84°48'W

CLEVELAND RGNL JETPORT (RZR)

RNAV (GPS) RWY 21

SE-1, 07 AUG 2025 to 04 SEP 2025

SE-1, 07 AUG 2025 to 04 SEP 2025