

HARDIN, MONTANA

AL-10973 (FAA)

21 280

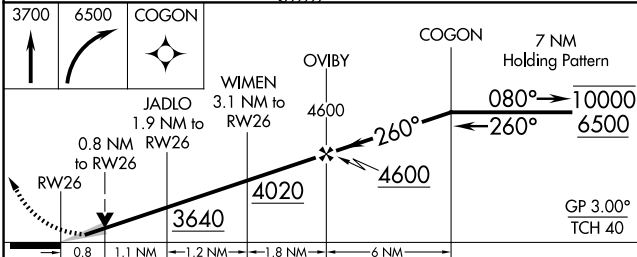
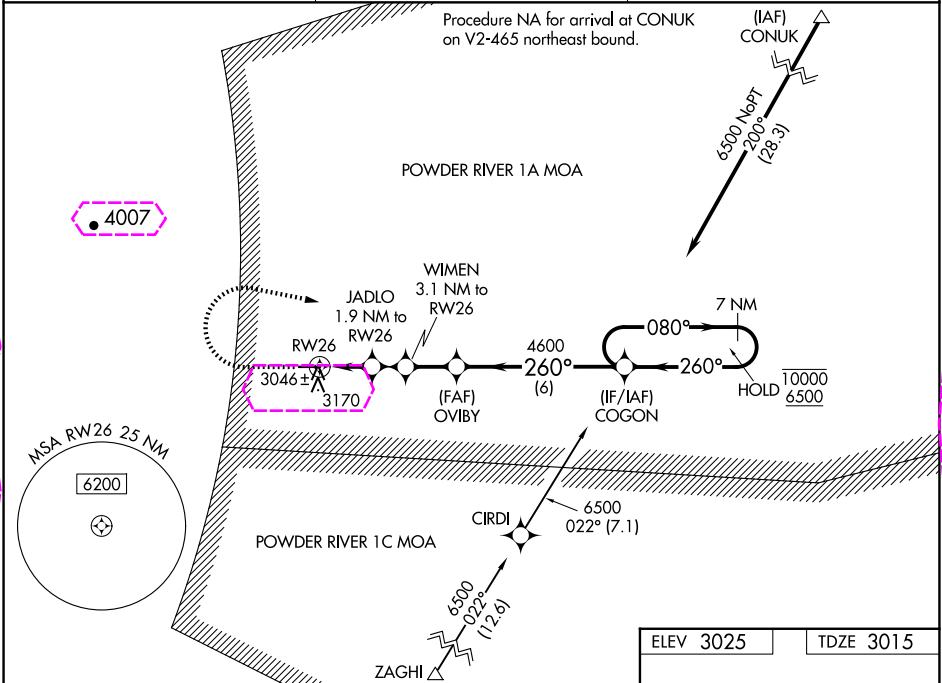
WAAS CH <b>65644</b> <b>W26A</b>	APP CRS <b>260°</b>	Rwy Idg <b>4491</b> TDZE <b>3015</b> Apt Elev <b>3025</b>
--	------------------------	---

# RNAV (GPS) RWY 26

BIG HORN COUNTY (ØØU)

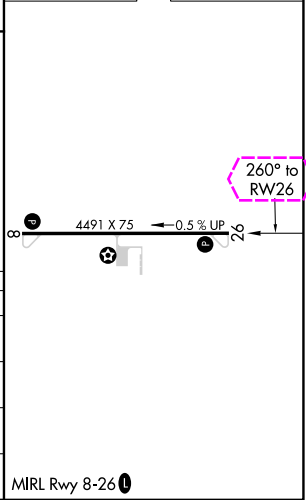
RNP APCH-GPS.	MISSED APPROACH: Climb to 3700 then climbing right turn to 6500 direct COGON and hold, continue climb-in-hold to 6500.
For uncompensated Baro-VNAV systems, LNAV/VNAV NA below -20°C or above 54°C.	

AWOS-3 <b>118.325</b>	SALT LAKE CENTER <b>132.425 317.45</b>	UNICOM <b>122.8 (CTAF) Ø</b>
--------------------------	---	---------------------------------



ELEV 3025	TDZE 3015
-----------	-----------

CATEGORY	A	B	C	D
LPV DA	3215-1	200 (200-1)		NA
LNAV/VNAV DA	3265-1	250 (300-1)		NA
LNAV MDA	3300-1	285 (300-1)		NA
CIRCLING	3480-1 455 (500-1)	3500-1 475 (500-1)		NA



HARDIN, MONTANA  
Amdt 1 07OCT21

45°45'N-107°40'W

# RNAV (GPS) RWY 26

BIG HORN COUNTY (ØØU)

NW-1, 10 JUL 2025 to 07 AUG 2025

NW-1, 10 JUL 2025 to 07 AUG 2025

HARDIN, MONTANA

AL-10973 (FAA)

25219

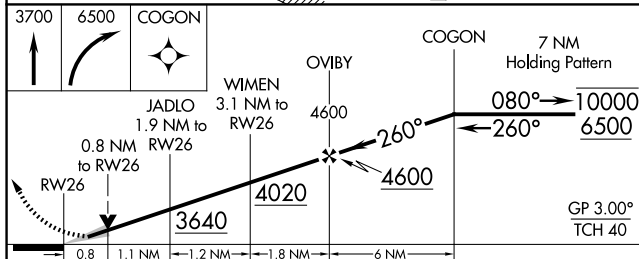
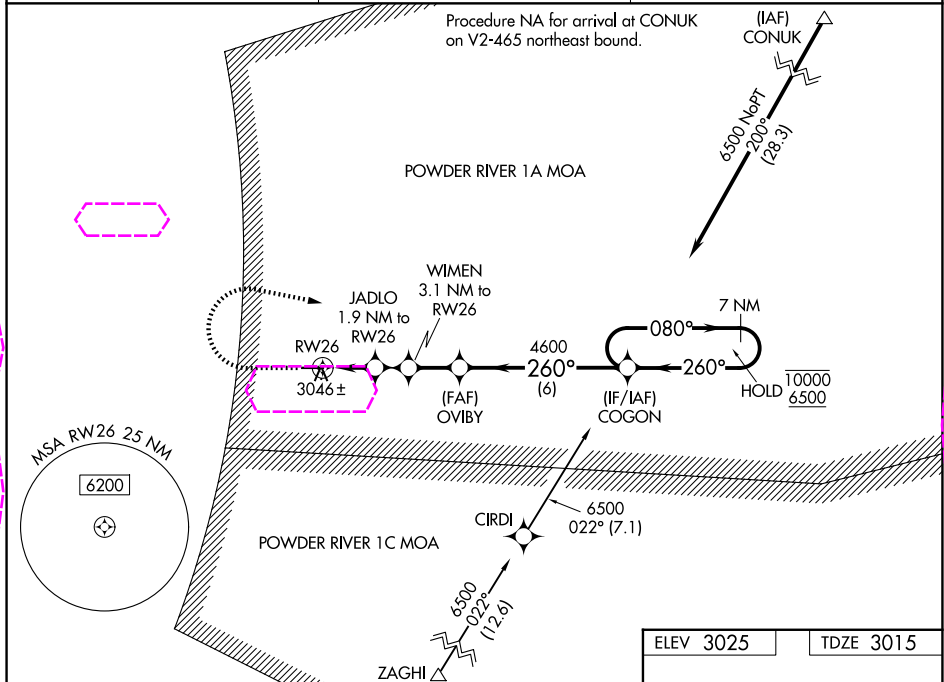
WAAS CH <b>65644</b> <b>W26A</b>	APP CRS <b>260°</b>	Rwy Ldg <b>4491</b> TDZE <b>3015</b> Apt Elev <b>3025</b>
--	------------------------	--

# RNAV (GPS) RWY 26

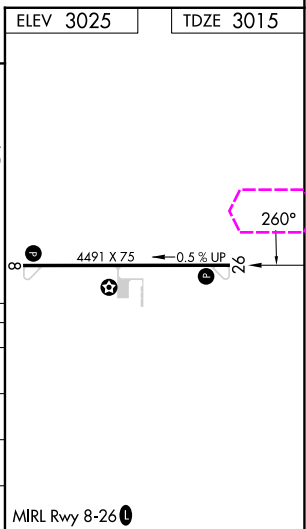
BIG HORN COUNTY (ØØU)

RNP APCH-GPS.	MISSED APPROACH: Climb to 3700 then climbing right turn to 6500 direct COGON and hold, continue climb-in-hold to 6500.
For uncompensated Baro-VNAV systems, LNAV/VNAV NA below -20°C or above 54°C.	

AWOS-3 <b>118.325</b>	SALT LAKE CENTER <b>132.425 317.45</b>	UNICOM <b>122.8 (CTAF) Ø</b>
--------------------------	---	---------------------------------



CATEGORY	A	B	C	D
LPV DA	3215-1	200 (200-1)		NA
LNAV/VNAV DA	3265-1	250 (300-1)		NA
LNAV MDA	3300-1	285 (300-1)		NA
CIRCLING	3480-1 455 (500-1)	3500-1 475 (500-1)		NA



HARDIN, MONTANA  
Amdt 1 07OCT21

45°45'N-107°40'W

# RNAV (GPS) RWY 26

BIG HORN COUNTY (ØØU)