

SOUTH NAKNEK, ALASKA

AL-10970 (FAA)

25219

WAAS CH 87137 W31B	APP CRS 306°	Rwy Ldg 2755 TDZE 160 Apt Elev 162
--	------------------------	---

RNAV (GPS) RWY 31

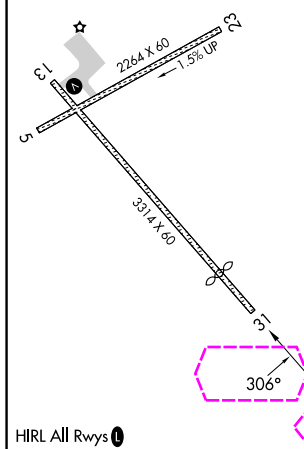
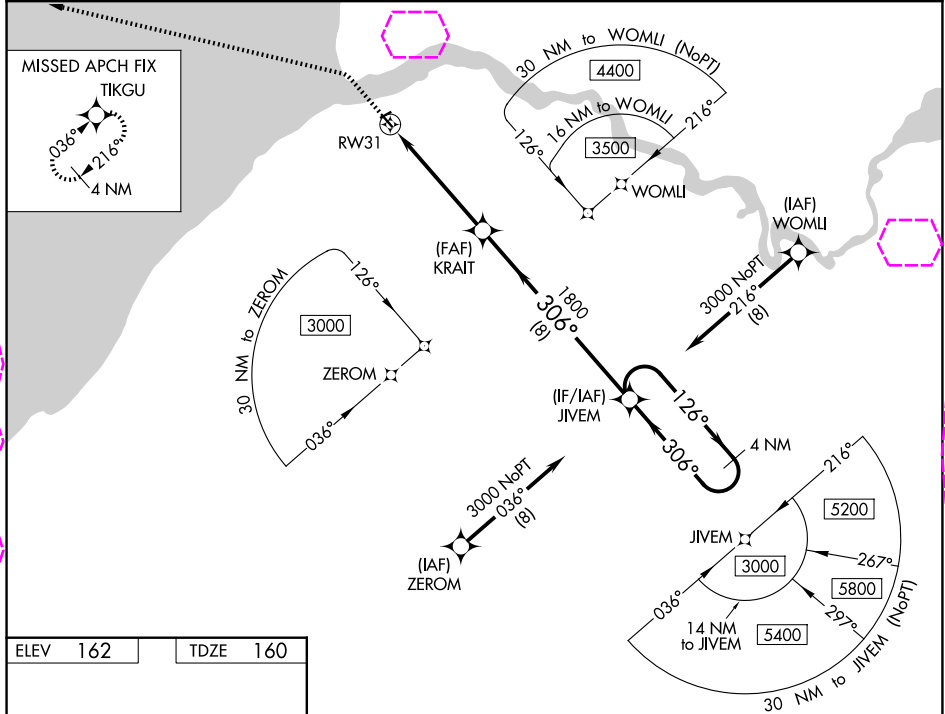
SOUTH NAKNEK NR 2 (WSN)(PFWS)




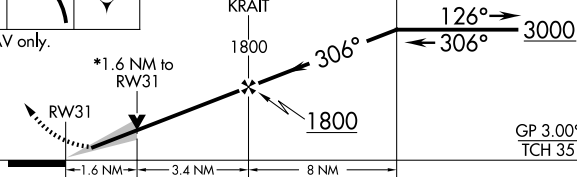
RNP APCH.

▼ Baro-VNAV and VDP NA when using King Salmon altimeter setting. For uncompensated Baro-VNAV systems, LNAV/VNAV NA below -21°C or above 54°C. When local altimeter setting not received, use King Salmon altimeter setting and increase all DA/MDA 40 feet. Circling Rwy 5 NA at night.

MISSED APPROACH: Climb to 700 then climbing left turn to 3200 direct TIKGU and hold.

AWOS-3P 121.575	ANCHORAGE CENTER 124.8 354.0	CTAF 122.9 0
---------------------------	--	------------------------



700	3200	TIKGU	4 NM Holding Pattern			
						
*LNAV only.			*1.6 NM to RW31			
						GP 3.00° TCH 35
CATEGORY	A		B		C	D
LPV DA	410-1	250 (300-1)		NA		
LNAV/ VNAV	410-1	250 (300-1)		NA		
LNAV MDA	700-1	540 (600-1)		NA		
CIRCLING	700-1	538 (600-1)		NA		

SOUTH NAKNEK, ALASKA
Orig-A 08NOV18

58°42'N-157°00'W

SOUTH NAKNEK NR 2 (WSN)(PFWS)
RNAV (GPS) RWY 31

AK, 07 AUG 2025 to 02 OCT 2025