

SOUTH NAKNEK, ALASKA

AL-10970 (FAA)

2112

WAAS CH 42937 W13A	APP CRS 126°	Rwy Idg 3314 TDZE 160 Apt Elev 162
--	------------------------	---

RNAV (GPS) RWY 13

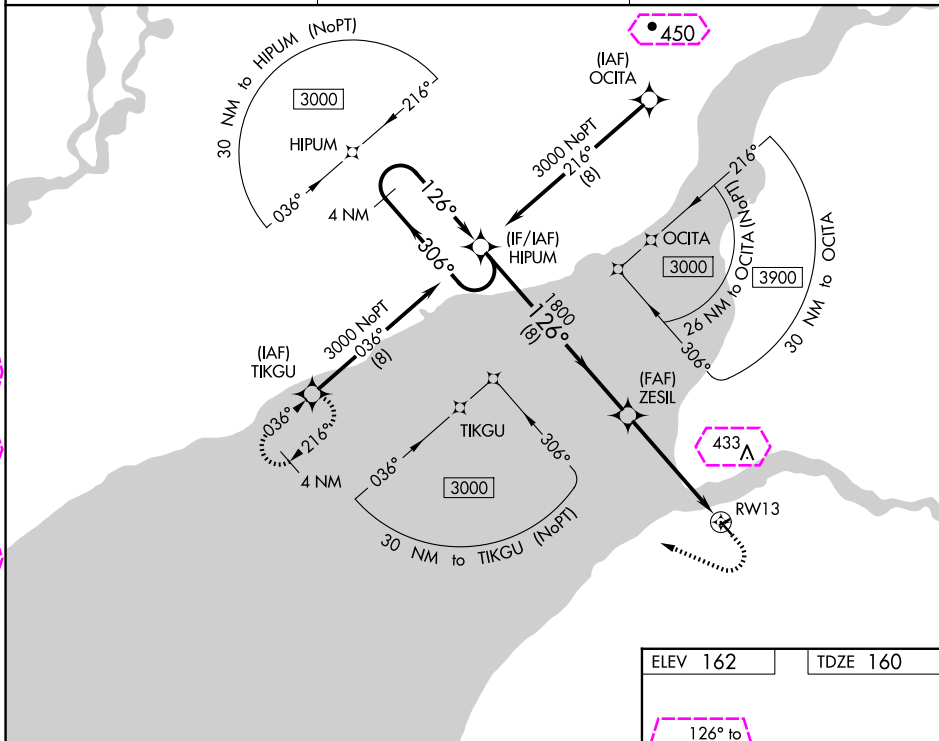
SOUTH NAKNEK NR 2 (WSN)(PFWS)




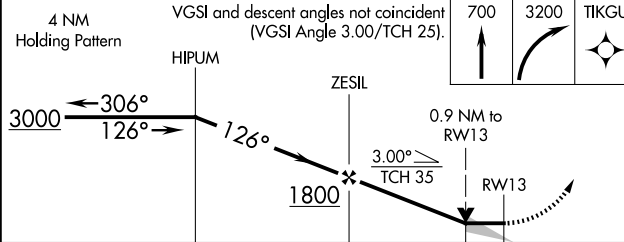

RNP APCH.

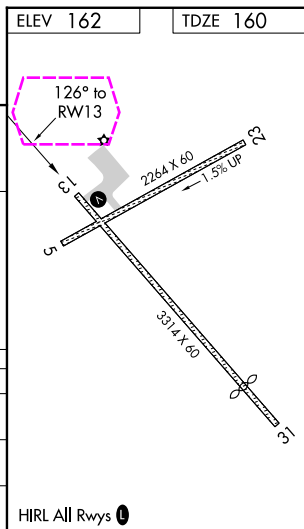
- ▼ When local altimeter setting not received, use King Salmon altimeter setting and increase all
▲ MDA 40 feet. Circling Rwy 5 NA at night. VDP NA when using King Salmon altimeter setting.

MISSED APPROACH: Climb to 700 then climbing right turn to 3200 direct TIKGU and hold.

AWOS-3P 121.575	ANCHORAGE CENTER 124.8 354.0	CTAF 122.9 0
---------------------------	--	------------------------



4 NM Holding Pattern		VGSI and descent angles not coincident (VGSI Angle 3.00/TCH 25).		700 	3200 	TIKGU 
						
CATEGORY	A	B	C	D		
LP MDA	480-1	320 (400-1)	NA			
LNAV MDA	500-1	340 (400-1)	NA			
 CIRCLING	560-1 398 (400-1)	620-1 458 (500-1)	NA			



SOUTH NAKNEK, ALASKA
Orig-A 08NOV18

58°42'N-157°00'W

SOUTH NAKNEK NR 2 (WSN)(PFWS)
RNAV (GPS) RWY 13

AK, 12 JUN 2025 to 07 AUG 2025

AK, 12 JUN 2025 to 07 AUG 2025

WAAS CH 42937 W13A	APP CRS 126°	Rwy Ldg 3314 TDZE 160 Apt Elev 162
--	------------------------	---

RNAV (GPS) RWY 13

SOUTH NAKNEK NR 2 (WSN)(PFWS)

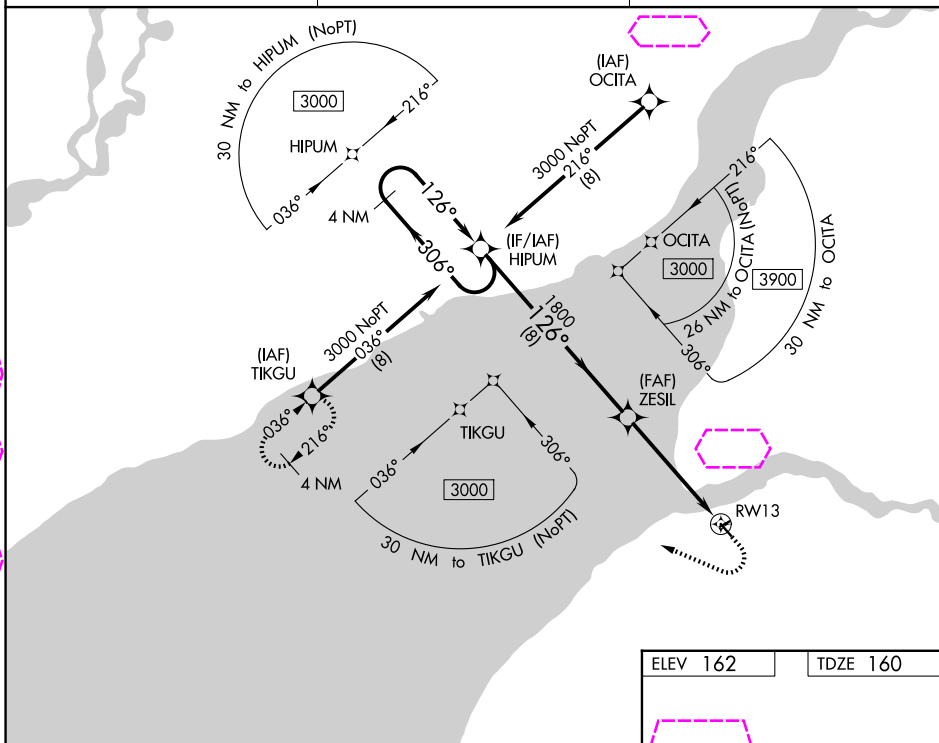
RNP APCH.

T When local altimeter setting not received, use King Salmon altimeter setting and increase all
A MDA 40 feet. Circling Rwy 5 NA at night. VDP NA when using King Salmon altimeter setting.

MISSED APPROACH: Climb to 700 then climbing right turn to 3200 direct TIKGU and hold.

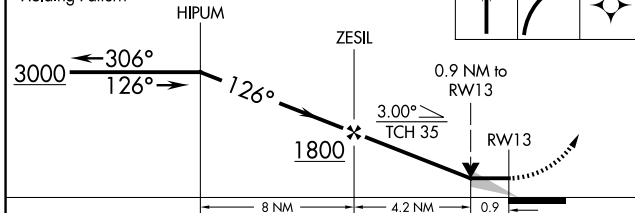
AWOS-3P
121.575

ANCHORAGE CENTER
124.8 354.0

CTAF
122.9 **L**4 NM
Holding Pattern

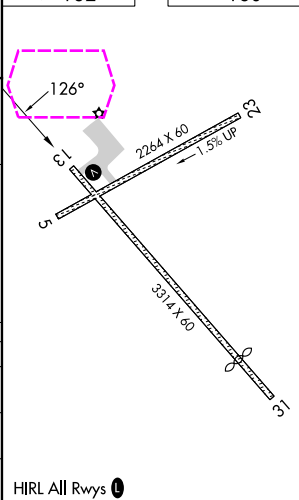
VGSI and descent angles not coincident
(VGSI Angle 3.00/TCH 25).

700	3200	TIKGU
		



CATEGORY	A	B	C	D
LP MDA	480-1	320 (400-1)	NA	
LNAV MDA	500-1	340 (400-1)	NA	
CIRCLING	560-1 398 (400-1)	620-1 458 (500-1)	NA	

ELEV 162		TDZE 160
----------	--	----------



SOUTH NAKNEK, ALASKA
Orig-A 08NOV18

58°42'N-157°00'W

SOUTH NAKNEK NR 2 (WSN)(PFWS)
RNAV (GPS) RWY 13

AK, 07 AUG 2025 to 02 OCT 2025