

## RNAV (GPS)-A

HEALY RIVER (HRR) (PAHV)

APP CRS <b>324°</b>	Rwy Ldg TDZE Apt Elev	<b>N/A</b> <b>N/A</b> <b>1275</b>
------------------------	-----------------------------	---

RNP APCH - GPS.

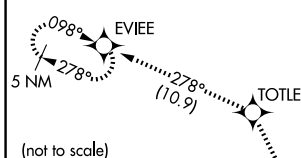


Procedure NA at night. Rwy 15 and 33 helicopter visibility reduction below 1 SM NA. Use McKinley Park altimeter setting; when not received, procedure NA.

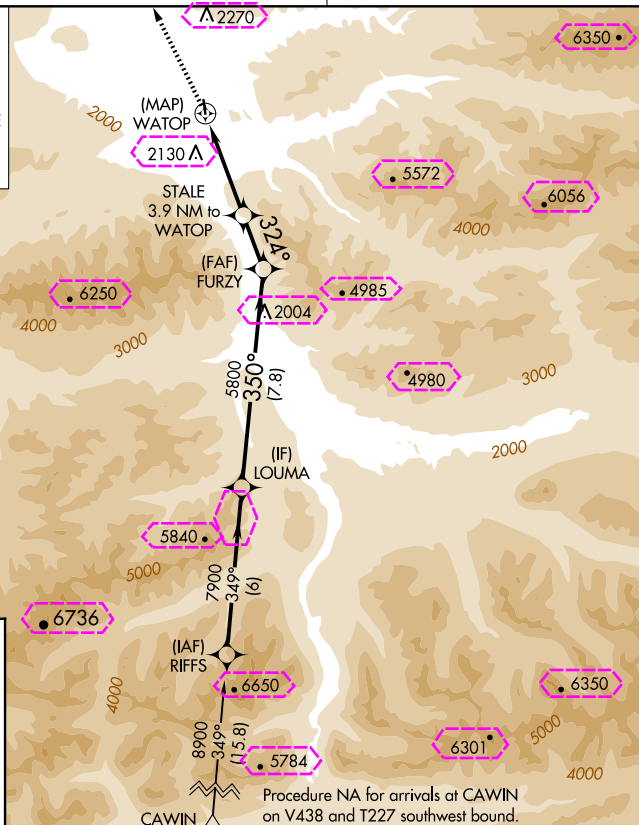
**MISSED APPROACH:** Climb to 5800 direct TOTLE and on track 278° to EVIEE and hold.

INR/PAIN AWOS-3P <b>135.75</b>	ANCHORAGE CENTER <b>120.9 319.2</b>	CTAF <b>122.90</b>
-----------------------------------	--	-----------------------

MISSED APCH FIX



(not to scale)



ELEV 1275

MIRL Rwy 15-33 **L**

5800 ↑	TOTLE ✦ tr 278° ✦	EVEE ✦			LOUMA
 WATOP 324° 5200 3.9 NM to WATOP		 FURZY 350° 5800 7900			
3.9 NM		2 NM		7.8 NM	
CATEGORY	A	B	C	D	
<b>C</b> CIRCING	3640-1¼ 2365 (2400-1¼)	3640-1½ 2365 (2400-1½)	3720-3 2445 (2500-3)	NA	

HEALY, ALASKA  
Amdt 1 29DEC22

HEALY RIVER (HRR) (PAHV)  
RNAV (GPS)-A

63°52'N-148°58'W

AK, 12 JUN 2025 to 07 AUG 2025

AK, 12 JUN 2025 to 07 AUG 2025

HEALY, ALASKA

AL-10968 (FAA)

25219

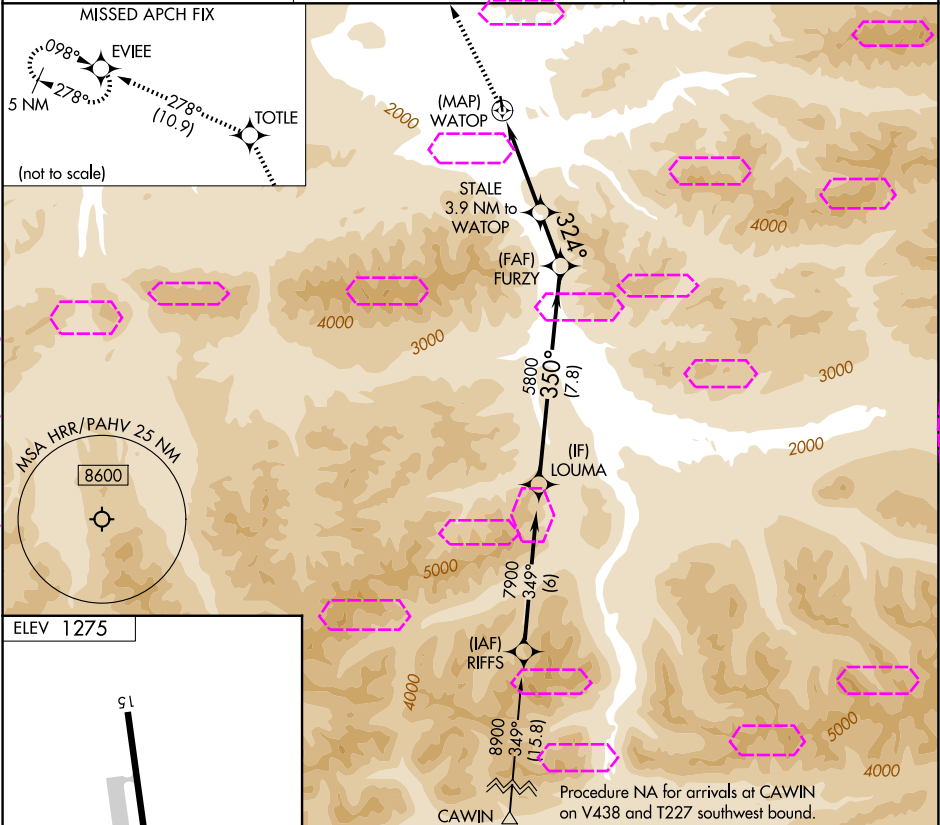
APP CRS	Rwy Ldg	N/A
324°	TDZE	N/A
	Apt Elev	1275

# RNAV (GPS)-A

HEALY RIVER (HRR) (PAHV)

RNP APCH - GPS.		<p>MISSED APPROACH: Climb to 5800 direct TOTLE and on track 278° to EVIEE and hold.</p>
<p>▼</p>	Procedure NA at night. Rwy 15 and 33 helicopter visibility reduction below 1 SM NA. Use McKinley Park altimeter setting; when not received, procedure NA.	
<p>▲ NA</p>		
<p>❄ -14°C</p>		

INR/PAIN AWOS-3P 135.75	ANCHORAGE CENTER 120.9 319.2	CTAF 122.9
----------------------------	---------------------------------	---------------



ELEV 1275		5800 TOTLE		fr 278°		EVIEE		LOUMA	
51		324°		324°		350°		7900	
2910 X 60		WATOP		STALE 3.9 NM to WATOP		FURZY		CAWIN	
33		3.9 NM		2 NM		7.8 NM			
MIRL Rwy 15-33		CATEGORY		A		B		C	
		CIRCLING		3640-1¼ 2365 (2400-1¼)		3640-1½ 2365 (2400-1½)		3720-3 2445 (2500-3)	
								NA	

HEALY, ALASKA  
Amdt 1 29DEC22

63°52'N-148°58'W

HEALY RIVER (HRR) (PAHV)  
RNAV (GPS)-A

AK, 07 AUG 2025 to 02 OCT 2025

AK, 07 AUG 2025 to 02 OCT 2025