

CENTRAL, ALASKA

AL-10966 (FAA)

21168

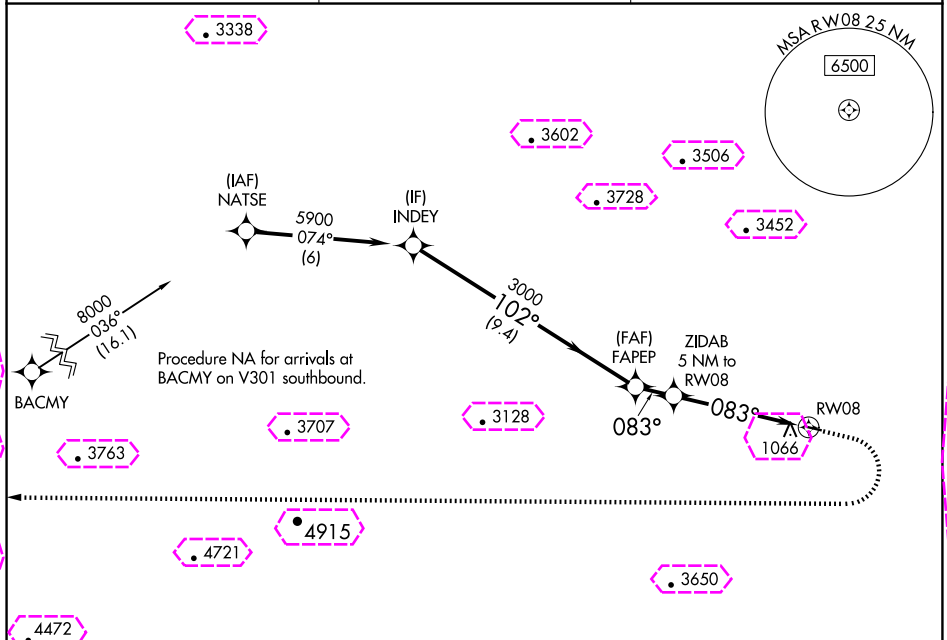
APP CRS 083°	Rwy Idg 2661
TDZE 936	Apt Elev 937

RNAV (GPS) RWY 8

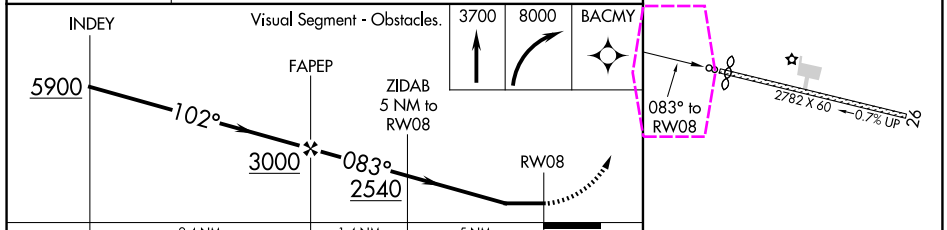
CENTRAL (CEM) (PACE)

NA DME/DME RNP-0.3 NA. Use Fort Yukon altimeter setting; when not received, procedure NA. Helicopter visibility reduction below 1 SM NA. Night Landing: Rwy 8 NA.	MISSED APPROACH: Climb to 3700 then climbing right turn to 8000 direct BACMY and hold.
---	--

FYU/PFYU AWOS-3P 125.8	ANCHORAGE CENTER 135.0 284.7	CTAF 122.9 0
----------------------------------	--	------------------------



MISSED APCH FIX BACMY 036° 216° 7 NM	ELEV 937	TDZE 936
--	----------	----------



CATEGORY	A	B	C	D
LNNAV MDA	2420-1¼ 1484 (1500-1¼)	2420-1½ 1484 (1500-1½)	NA	
CIRCLING	2420-1¼ 1483 (1500-1¼)	2420-1½ 1483 (1500-1½)	NA	

CENTRAL, ALASKA
Orig-B 12OCT17

65°34'N-144°47'W

CENTRAL (CEM) (PACE)

RNAV (GPS) RWY 8

CENTRAL, ALASKA

AL-10966 (FAA)

25219

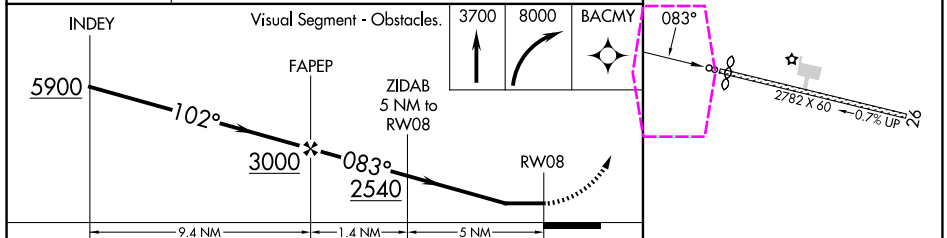
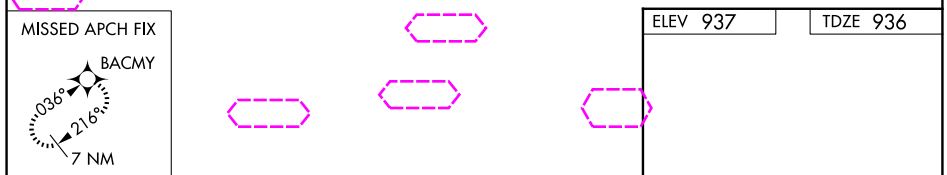
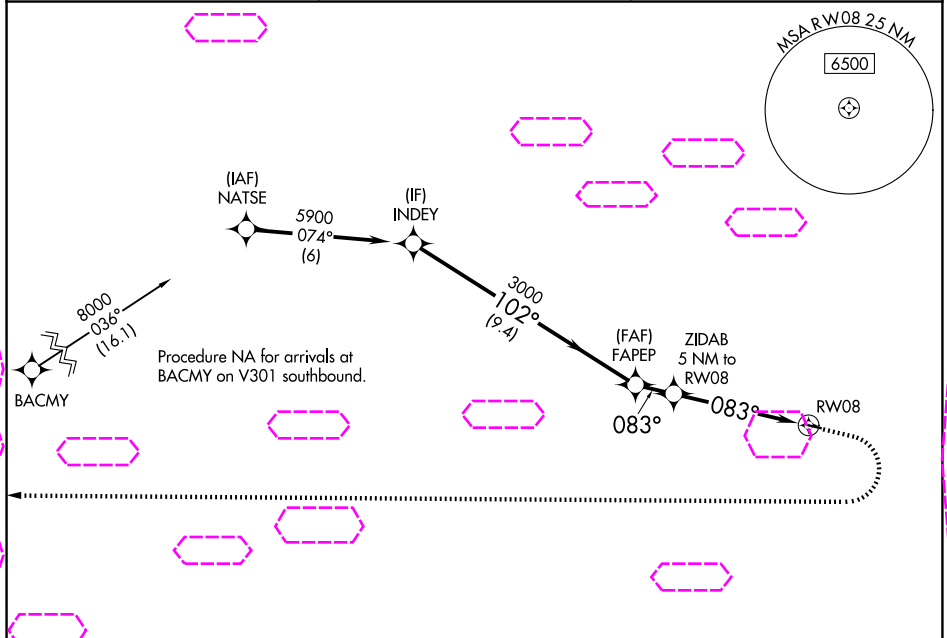
APP CRS 083°	Rwy Ldg 2661
TDZE 936	
Apt Elev 937	

RNAV (GPS) RWY 8

CENTRAL (CEM) (PACE)

NA DME/DME RNP-0.3 NA. Use Fort Yukon altimeter setting; when not received, procedure NA. Helicopter visibility reduction below 1 SM NA. Night Landing: Rwy 8 NA.	MISSED APPROACH: Climb to 3700 then climbing right turn to 8000 direct BACMY and hold.
---	--

FYU/PFYU AWOS-3P 125.8	ANCHORAGE CENTER 135.0 284.7	CTAF 122.9 0
----------------------------------	--	------------------------



CATEGORY	A	B	C	D
LNNAV MDA	2420-1¼ 1484 (1500-1¼)	2420-1½ 1484 (1500-1½)	NA	
CIRCLING	2420-1¼ 1483 (1500-1¼)	2420-1½ 1483 (1500-1½)	NA	

CENTRAL, ALASKA
Orig-B 12OCT17

65°34'N-144°47'W

CENTRAL (CEM) (PACE)
RNAV (GPS) RWY 8