

AK, 12 JUN 2025 to 07 AUG 2025

CENTRAL, ALASKA

AL-10966 (FAA)

25219

WAAS CH <b>82631</b> <b>W26A</b>	APP CRS <b>264°</b>	Rwy Ldg <b>2782</b> TDZE <b>937</b> Apt Elev <b>937</b>
--	------------------------	---

# RNAV (GPS) RWY 26

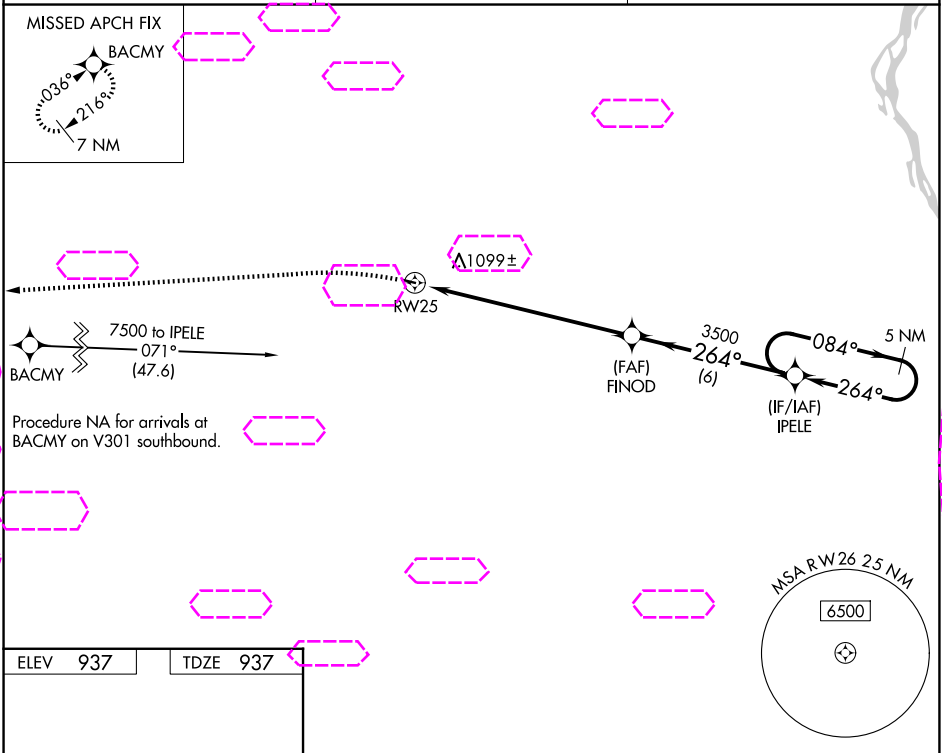
CENTRAL (CEM) (PACE)

**NA**

DME/DME RNP-0.3 NA. Use Fort Yukon altimeter setting; when not received, procedure NA. Helicopter visibility reduction below ¾ SM NA. Night Landing: Rwy 8 NA.

MISSED APPROACH: Climbing left turn to 8000 direct BACMY and hold.

FYU/PFYU AWOS-3P <b>125.8</b>	ANCHORAGE CENTER <b>135.0 284.7</b>	<b>CTAF</b> <b>122.9 0</b>
----------------------------------	--	-------------------------------



ELEV 937

TDZE 937

8000

BACMY

Visual Segment - Obstacles.

IPELE

5 NM Holding Pattern

FINOD

RW26

3500

8 NM

6 NM

264°

084°

5400

CATEGORY	A	B	C	D
LP MDA	2440-1¼ 1503 (1600-1¼)	2440-1½ 1503 (1600-1½)	NA	
LNAV MDA	2900-1¼ 1963 (2000-1¼)	2900-1½ 1963 (2000-1½)	NA	
CIRCLING	2900-1¼ 1963 (2000-1¼)	2900-1½ 1963 (2000-1½)	NA	

MIRL Rwy 8-26 0

AK, 07 AUG 2025 to 02 OCT 2025

AK, 07 AUG 2025 to 02 OCT 2025