

MANTI, UTAH

AL-10960 (FAA)

24361

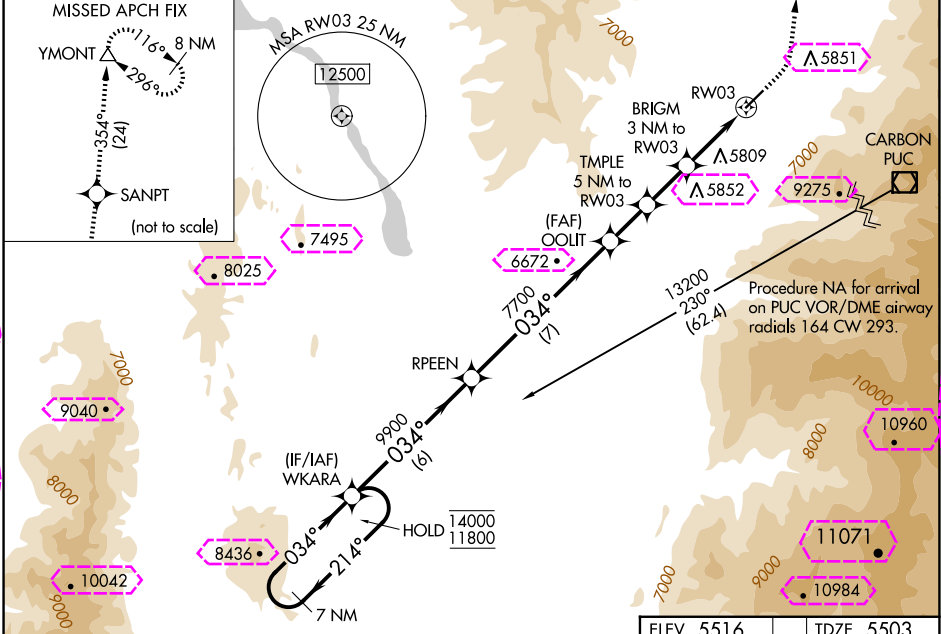
WAAS CH 65839 W03A	APP CRS 034°	Rwy Idg 5021 TDZE 5503 Apt Elev 5516
--	------------------------	--

RNAV (GPS) RWY 3

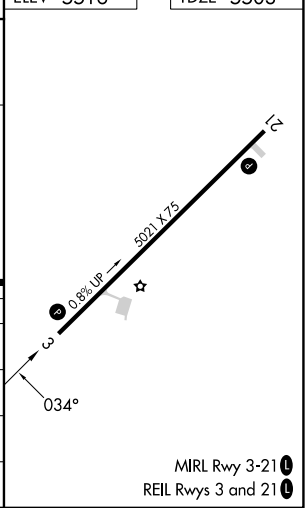
MANTI-EPHRAIM (41U)

RNP APCH - GPS.	MISSED APPROACH: Climb to 6020 then climbing left turn to 13000 direct SANPT and on track 354° direct YMONT and hold.
▼ When local altimeter setting not received, procedure NA. Procedure ▲ NA at night. Rwy 3 helicopter visibility reduction below 1 SM NA. Circling NA southeast of Rwy 3-21. Baro-VNAV NA.	

AWOS-3PT 120.025	SALT LAKE CENTER 133.6 296.25	UNICOM 122.8 (CTAF) 0
----------------------------	---	---------------------------------



7 NM Holding Pattern	WKARA	6020	13000	SANPT	tr 354°	YMONT
14000 ← 214°	RPEEN	OOLIT	TMPL	BRIGM	RWY 3	
11800 → 034°		7700	5 NM to RWY 3	3 NM to RWY 3		
GP 3.00°		7700	7100	6460		
TCH 40						
	6 NM	7 NM	1.9 NM	2 NM	3 NM	
CATEGORY	A	B	C	D		
LPV DA	5781-1 278 (300-1)					
LNAV/VNAV DA	5823-1 320 (400-1)				NA	
LNAV MDA	6000-1 497 (500-1)		6180-1 677 (700-1 1/2)			
CIRCLING	6000-1 484 (500-1)		6280-2 764 (800-2 1/4)		7620-3 2104 (2200-3)	



MANTI, UTAH
Orig-C 26DEC24

39°20'N-111°37'W

MANTI-EPHRAIM (41U)
RNAV (GPS) RWY 3

SW-4, 10 JUL 2025 to 07 AUG 2025

SW-4, 10 JUL 2025 to 07 AUG 2025

MANTI, UTAH

AL-10960 (FAA)

25219

WAAS CH 65839 W03A	APP CRS 034°	Rwy Ldg TDZE Apt Elev	5021 5503 5516
--	------------------------	-----------------------------	---

RNAV (GPS) RWY 3

MANTI-EPHRAIM (41U)

RNP APCH - GPS.

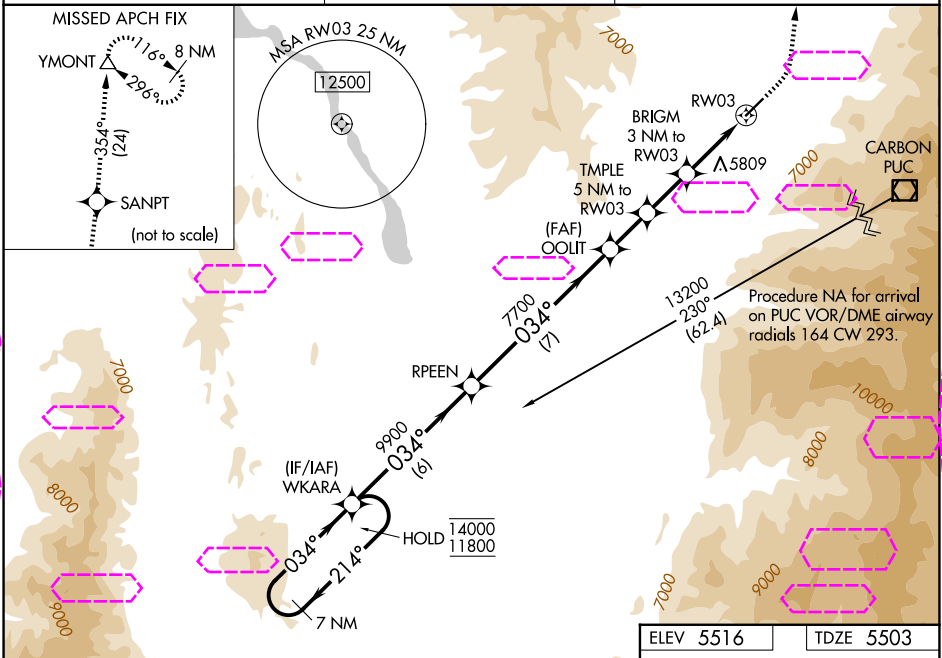
▼

When local altimeter setting not received, procedure NA. Procedure NA at night. Rwy 3 helicopter visibility reduction below 1 SM NA. Circling NA southeast of Rwy 3-21. Baro-VNAV NA.

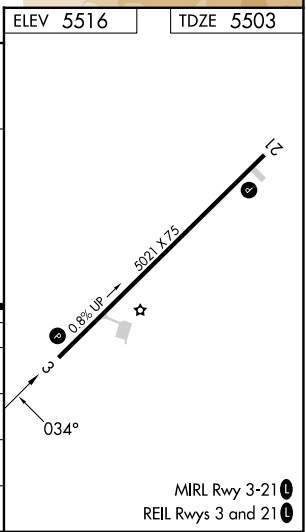
MISSED APPROACH:

Climb to 6020 then climbing left turn to 13000 direct SANPT and on track 354° direct YMONT and hold.

AWOS-3PT 120.025	SALT LAKE CENTER 133.6 296.25	UNICOM 122.8 (CTAF) 0
----------------------------	---	---------------------------------



7 NM Holding Pattern		WKARA	6020	13000	SANPT	tr 354°	YMONT
14000 ← 214°		RPEEN	OOLIT	TMPL	BRIGM	RW03	
11800 → 034°			7700	5 NM to RW03	3 NM to RW03		
GP 3.00°			7100				
TCH 40			6460				
6 NM		7 NM	1.9 NM	2 NM	3 NM		
CATEGORY	A	B	C	D			
LPV DA	5781-1 278 (300-1)						
LNAV/VNAV DA	5823-1 320 (400-1)				NA		
LNAV MDA	6000-1 497 (500-1)		6180-1 677 (700-1 6)				
CIRCLING	6000-1 484 (500-1)		6280-2 764 (800-2 4)		7620-3 2104 (2200-3)		



MANTI, UTAH
Orig-C 26DEC24

39°20'N-111°37'W

MANTI-EPHRAIM (41U)
RNAV (GPS) RWY 3

SW-4, 07 AUG 2025 to 04 SEP 2025

SW-4, 07 AUG 2025 to 04 SEP 2025

MIRL Rwy 3-21
REIL Rws 3 and 21