

LIMON, COLORADO

AL-10953 (FAA)

25079

WAAS CH 42744 W34A	APP CRS 343°	Rwy Idg 4700 TDZE 5365 Apt Elev 5374
--	------------------------	---

RNAV (GPS) RWY 34

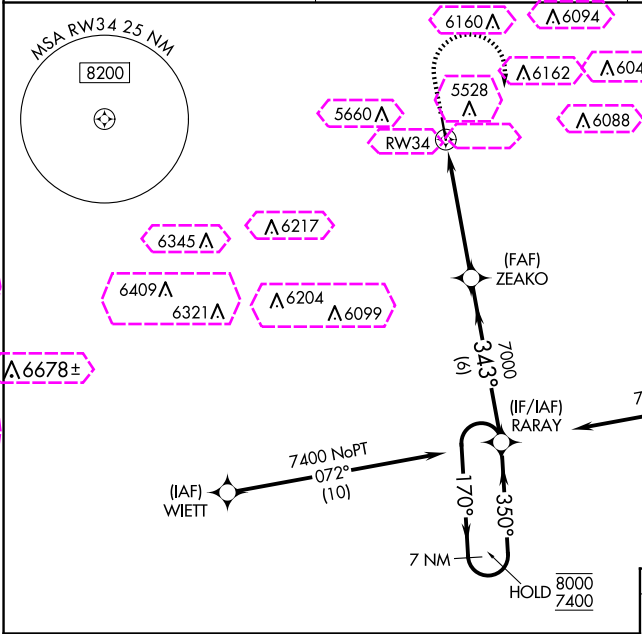
LIMON MUNI (LIC)

RNP APCH - GPS.

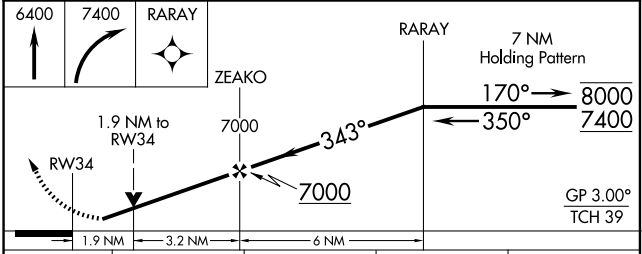
▼ For uncompensated Baro-VNAV systems, LNAV/VNAV NA below -25°C or above 54°C. Rwy 34 helicopter visibility reduction below ¾ SM NA. Baro-VNAV and VDP NA when using CFO altimeter setting. When local altimeter not received, use CFO altimeter setting and increase LPV DA to 5751 feet and all visibilities ¾ SM. Increase LNAV/VNAV DA to 5960 feet and all visibilities ¾ SM. Increase all MDAs 140 feet and LNAV visibility Cat B/C ¾ SM, and Circling visibility Cat B/C ½ SM.

MISSED APPROACH: Climb to 6400, then climbing right turn to 7400 direct RARAY and hold.

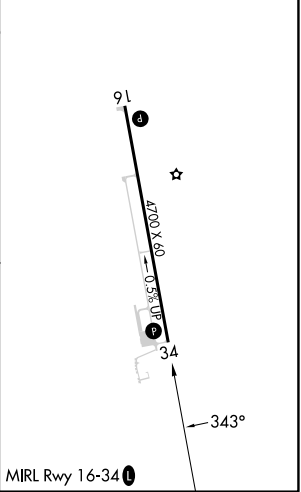
ASOS 121.125	DENVER CENTER 133.4 377.175	CTAF 122.9
------------------------	---------------------------------------	----------------------



ELEV 5374	TDZE 5365
-----------	-----------



CATEGORY	A	B	C	D
LPV DA	5615-1	250 (300-1)		NA
LNAV/VNAV DA	5824-1 ¾	459 (500-1 ¾)		NA
LNAV MDA	6000-1	635 (700-1)	6000-1 ¾ 635 (700-1 ¾)	NA
CIRCLING	6000-1	626 (700-1)	6220-2 ½ 846 (900-2 ½)	NA



LIMON, COLORADO

Amdt 1 20MAR25

39°16'N-103°40'W

LIMON MUNI (LIC)

RNAV (GPS) RWY 34

SW-1, 10 JUL 2025 to 07 AUG 2025

SW-1, 10 JUL 2025 to 07 AUG 2025

LIMON, COLORADO

AL-10953 (FAA)

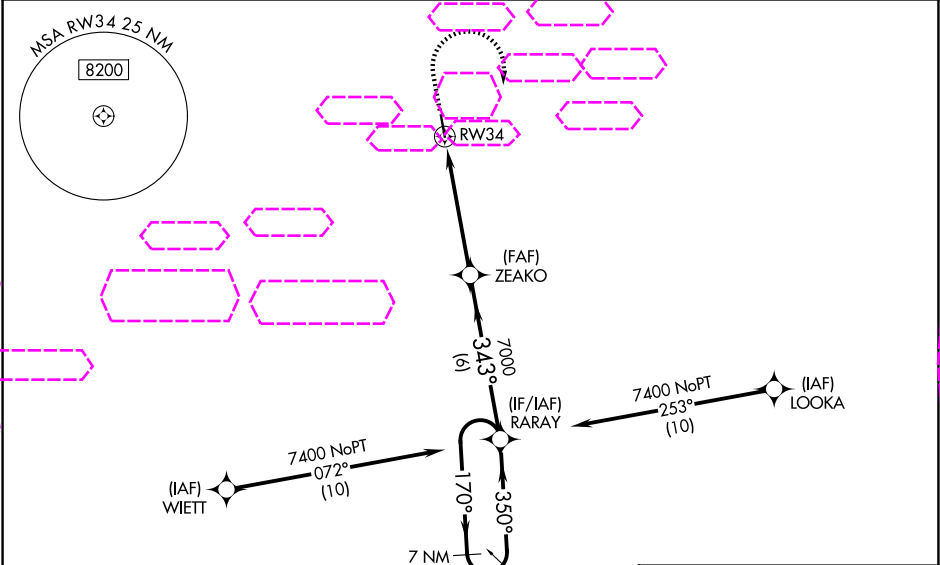
25219

WAAS CH 42744 W34A	APP CRS 343°	Rwy Ldg TDZE 5365 Apt Elev 5374
--	------------------------	---

RNAV (GPS) RWY 34
LIMON MUNI (LIC)

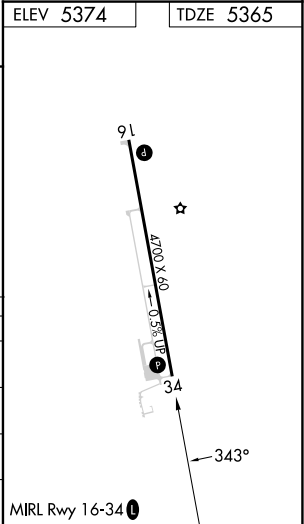
RNP APCH - GPS. ▼ For uncompensated Baro-VNAV systems, LNAV/VNAV NA below -25°C or above 54°C. Rwy 34 helicopter visibility reduction below ¾ SM NA. Baro-VNAV and VDP NA when using CFO altimeter setting. When local altimeter not received, use CFO altimeter setting and increase LPV DA to 5751 feet and all visibilities ½ SM. Increase LNAV/VNAV DA to 5960 feet and all visibilities ¾ SM. Increase all MDAs 140 feet and LNAV visibility Cat B/C ¾ SM, and Circling visibility Cat B/C ½ SM.	MISSED APPROACH: Climb to 6400, then climbing right turn to 7400 direct RARAY and hold.
--	---

ASOS 121.125	DENVER CENTER 133.4 377.175	CTAF 122.9 0
------------------------	---------------------------------------	------------------------



<div><div><div>6400</div><div>↑</div></div><div>7400</div><div><div>RARAY</div><div></div></div></div> <div><div>ZEAKO</div><div>7000</div><div>1.9 NM to RW34</div><div></div><div>RW34</div><div>1.9 NM</div><div>3.2 NM</div><div>6 NM</div><div><div>RARAY</div><div>7 NM Holding Pattern</div><div>170° →</div><div>← 350°</div><div>8000</div><div>7400</div><div>343°</div><div>7000</div><div>GP 3.00°</div><div>TCH 39</div></div></div>				
---	--	--	--	--

CATEGORY	A	B	C	D
LPV DA	5615-1 250 (300-1)			NA
LNAV/VNAV DA	5824-1 ¾ 459 (500-1 ¾)			NA
LNAV MDA	6000-1 635 (700-1)	6000-1 ¾ 635 (700-1 ¾)		NA
CIRCLING	6000-1 626 (700-1)	6220-2 ½ 846 (900-2 ½)		NA



LIMON, COLORADO

Amdt 1 20MAR25

39°16'N-103°40'W

LIMON MUNI (LIC)

RNAV (GPS) RWY 34