

ELLSWORTH, KANSAS

AL-10803 (FAA)

24361

WAAS CH 72844 W35A	APP CRS 353°	Rwy Idg 4500 TDZE 1621 Apt Elev 1633
--	------------------------	---

RNAV (GPS) RWY 35

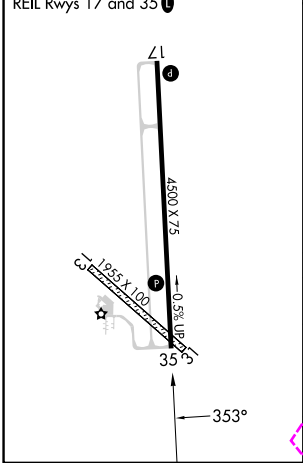
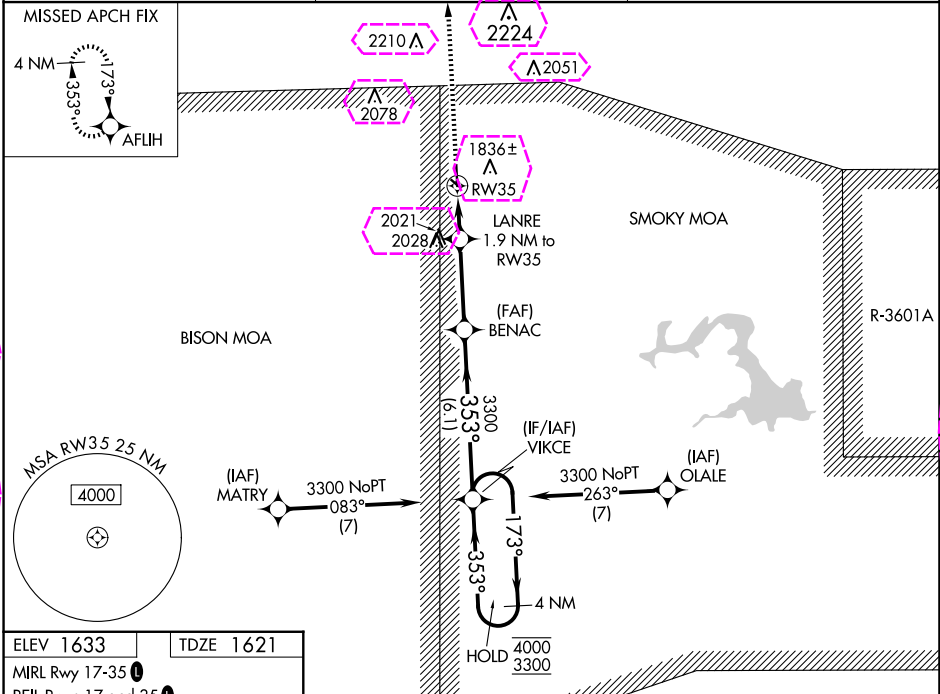
ELLSWORTH MUNI (9K7)

RNP APCH - GPS.

⚠ Circling NA to Rwy 13 and 31. Rwy 35 helicopter visibility reduction below $\frac{3}{4}$ NA. For uncompensated Baro-VNAV systems, LNAV/VNAV NA below -18°C or above 54°C.

MISSED APPROACH: Climb to 3300 direct AFUHI and hold.

AWOS-3PT 119.675	KANSAS CITY CENTER 134.9 363.2	UNICOM 122.7 (CTAF) 0
----------------------------	--	---------------------------------



3300	AFUHI	BENAC	VIKCE	4 NM Holding Pattern
3300	3300	3300	3300	4000 3300
LANRE 1.9 NM to RW35	2260	353°	173°	GP 3.00° TCH 40
1.9 NM	3.3 NM	6.1 NM		
CATEGORY	A	B	C	D
LPV DA	1871-1	250 (300-1)		NA
LNAV/VNAV DA	2094-1 $\frac{3}{8}$	473 (500-1 $\frac{3}{8}$)		NA
LNAV MDA	2160-1	539 (600-1)	2160-1 $\frac{1}{2}$ 539 (600-1 $\frac{1}{2}$)	NA
CIRCLING	2200-1	567 (600-1)	2540-2 $\frac{3}{4}$ 907 (1000-2 $\frac{3}{4}$)	NA

ELLSWORTH, KANSAS
Orig 29DEC22

38°45'N-98°14'W

ELLSWORTH MUNI (9K7)
RNAV (GPS) RWY 35

ELLSWORTH, KANSAS

AL-10803 (FAA)

25219

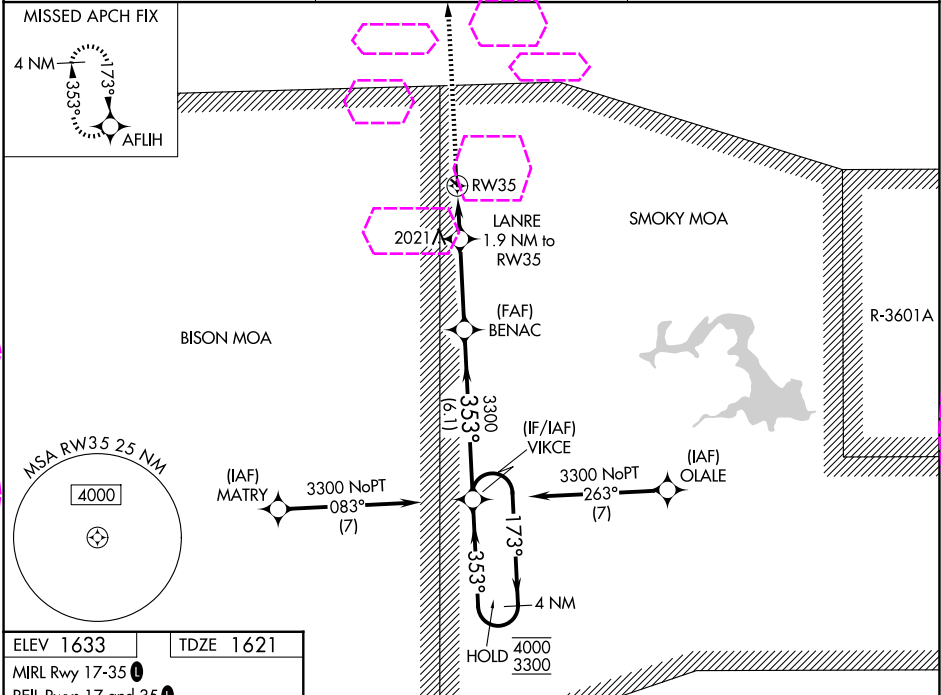
WAAS CH 72844 W35A	APP CRS 353°	Rwy Ldg TDZE 1621 Apt Elev 1633
--	------------------------	---

RNAV (GPS) RWY 35

ELLSWORTH MUNI (9K7)

RNP APCH - GPS. Circling NA to Rwy 13 and 31. Rwy 35 helicopter visibility reduction below $\frac{3}{4}$ NA. For uncompensated Baro-VNAV systems, LNAV/VNAV NA below -18°C or above 54°C.	MISSED APPROACH: Climb to 3300 direct AFUHI and hold.
--	---

AWOS-3PT 119.675	KANSAS CITY CENTER 134.9 363.2	UNICOM 122.7 (CTAF) 0
----------------------------	--	---------------------------------



3300	AFUHI	BENAC	VIKCE	4 NM Holding Pattern
3300	LANRE 1.9 NM to RW35	3300	353° 173° 353°	4000 3300
RW35	2260	3300	GP 3.00° TCH 40	
1.9 NM	3.3 NM	6.1 NM		
CATEGORY	A	B	C	D
LPV DA	1871-1	250 (300-1)		NA
LNAV/VNAV DA	2094-1 $\frac{3}{8}$	473 (500-1 $\frac{3}{8}$)		NA
LNAV MDA	2160-1	539 (600-1)	2160-1 $\frac{1}{2}$ 539 (600-1 $\frac{1}{2}$)	NA
CIRCLING	2200-1	567 (600-1)	2540-2 $\frac{3}{4}$ 907 (1000-2 $\frac{3}{4}$)	NA

ELLSWORTH, KANSAS

Orig 29DEC22

38°45'N-98°14'W

ELLSWORTH MUNI (9K7)

RNAV (GPS) RWY 35

NC-2, 07 AUG 2025 to 04 SEP 2025

NC-2, 07 AUG 2025 to 04 SEP 2025