

ELLSWORTH, KANSAS

AL-10803 (FAA)

24361

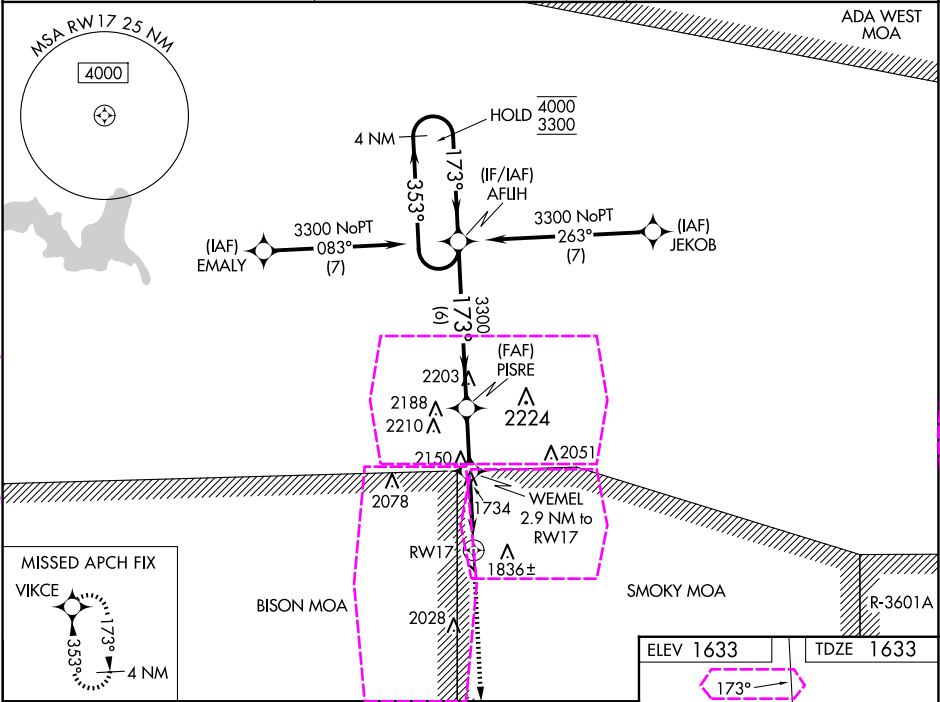
WAAS CH 69444 W17A	APP CRS 173°	Rwy Idg TDZE 1633 Apt Elev 1633
--	------------------------	---

RNAV (GPS) RWY 17

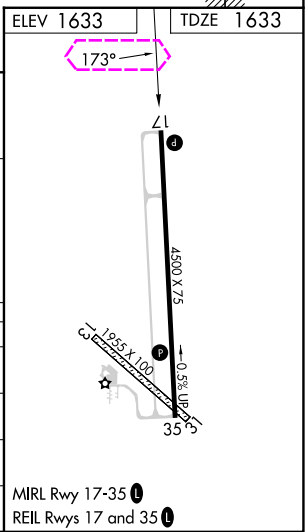
ELLSWORTH MUNI (9K7)

RNP APCH - GPS.	MISSED APPROACH: Climb to 3300 direct VIKCE and hold.
Circling NA to Rwys 13 and 31. For uncompensated Baro-VNAV systems, LNAV/VNAV NA below -18°C or above 54°C.	

AWOS-3PT 119.675	KANSAS CITY CENTER 134.9 363.2	UNICOM 122.7 (CTAF) 0
----------------------------	--	---------------------------------



4 NM Holding Pattern		AFJIH	PISRE	3300	VIKCE
4000 ← 353°		173° →	3300	WEMEL 2.9 NM to RW17	1 NM to RW17
3300		173°	3300	2580	RW17
GP 3.00°					
TCH 40					
		6 NM	2.3 NM	1.8 NM	1 NM
CATEGORY	A	B	C	D	
LPV DA		1833-1 200 (200-1)		NA	
LNAV/VNAV DA		1883-1 250 (300-1)		NA	
LNAV MDA		2000-1 367 (400-1)		NA	
CIRCLING	2200-1 567 (600-1)	2540-2 3/4 907 (1000-2 3/4)		NA	



ELLSWORTH, KANSAS
Orig 29DEC22

38°45'N-98°14'W

ELLSWORTH MUNI (9K7)
RNAV (GPS) RWY 17

ELLSWORTH, KANSAS

AL-10803 (FAA)

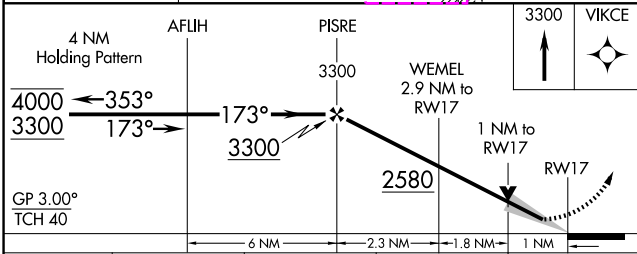
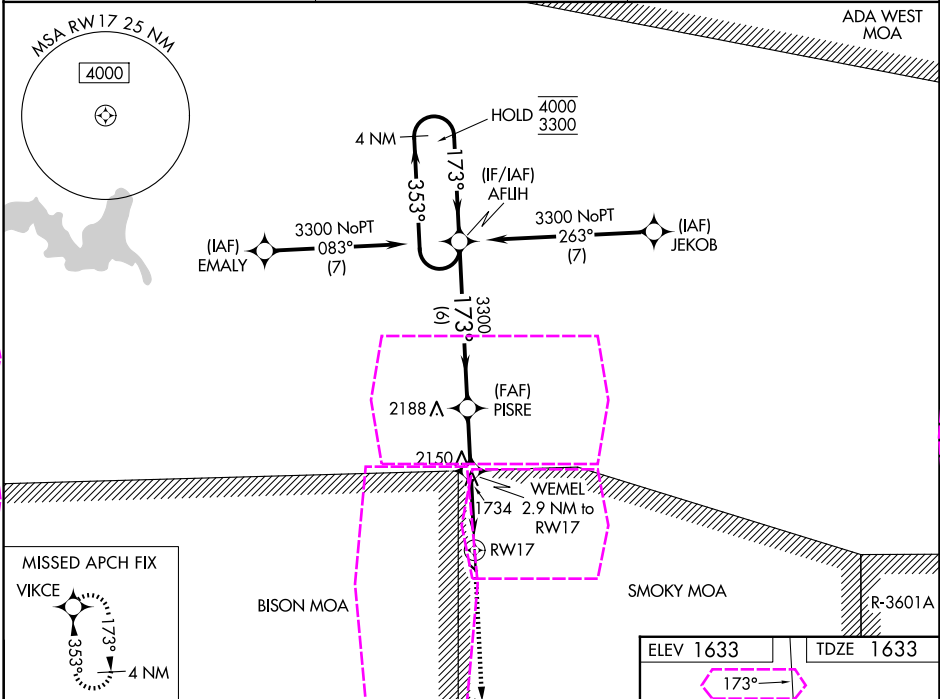
25219

WAAS CH 69444 W17A	APP CRS 173°	Rwy Ldg TDZE 1633 Apt Elev 1633
--	------------------------	---

RNAV (GPS) RWY 17
ELLSWORTH MUNI (9K7)

RNP APCH - GPS.	MISSED APPROACH: Climb to 3300 direct VIKCE and hold.
Circling NA to Rwys 13 and 31. For uncompensated Baro-VNAV systems, LNAV/VNAV NA below -18°C or above 54°C.	

AWOS-3PT 119.675	KANSAS CITY CENTER 134.9 363.2	UNICOM 122.7 (CTAF) 0
----------------------------	--	---------------------------------



CATEGORY	A	B	C	D
LPV DA	1833-1	200 (200-1)		NA
LNAV/VNAV DA	1883-1	250 (300-1)		NA
LNAV MDA	2000-1	367 (400-1)		NA
CIRCLING	2200-1	567 (600-1)	2540-2 3/4 907 (1000-2 3/4)	NA

