

NEW TOWN, NORTH DAKOTA

AL-10795 (FAA-O)

24137

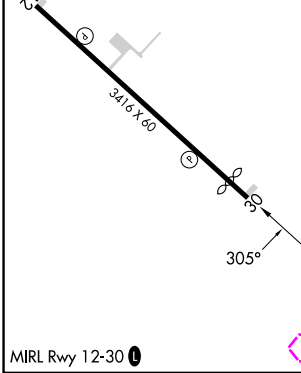
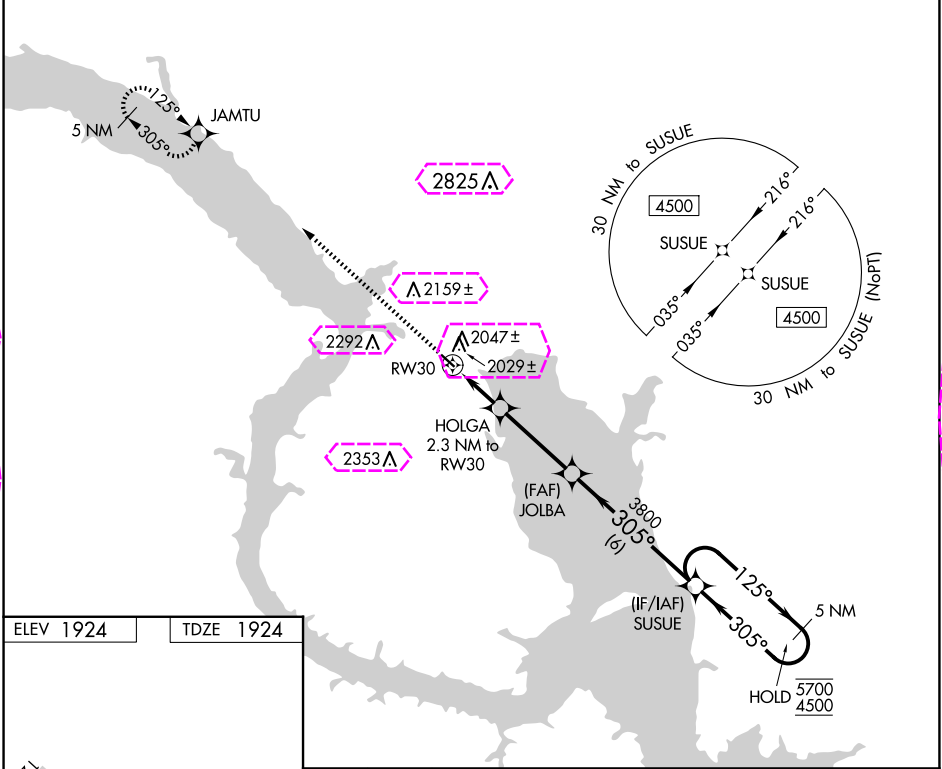
|         |          |      |
|---------|----------|------|
| APP CRS | Rwy Idg  | 3120 |
| 305°    | TDZE     | 1924 |
|         | Apt Elev | 1924 |

# RNAV (GPS) RWY 30

NEW TOWN MUNI (Ø5D)

|           |   |
|-----------|---|
| RNP APCH. | MISSED APPROACH: Climb to 4500 direct JAMTU and hold.   |
| ▼<br>▲ NA | Use Stanley altimeter setting, when not received, use Tioga altimeter setting and increase all MDAs 40 feet. Increase Circling Cat C visibility ¼ SM. |

|                                   |                 |
|-----------------------------------|-----------------|
| MINNEAPOLIS CENTER<br>127.6 279.6 | CTAF<br>122.9 0 |
|-----------------------------------|-----------------|



|          |                         |  |                               |                            |
|----------|-------------------------|--|-------------------------------|----------------------------|
| 4500     | JAMTU                   | VGSI and descent angles not coincident (VGSI Angle 3.00/TCH 31). | SUSUE                         | 5 NM Holding Pattern       |
|          |                         |  |                               | 125° → 5700<br>← 305° 4500 |
|          | HOLGA<br>2.3 NM to RW30 | JOLBA  |                               |                            |
|          | 3.00° TCH 35            |  |                               |                            |
|          | RW30                    |  |                               |                            |
|          | 2.3 NM                  | 3.5 NM   | 6 NM                          |                            |
|          | 2680                    | 3800   |                               |                            |
| CAT      | A                       | B  | C                             | D                          |
| LNAV MDA | 2380-1                  | 456 (500-1)  | 2380-1 3/8<br>456 (500-1 3/8) | NA                         |
| CIRCLING | 2520-1<br>596 (600-1)   | 2620-1<br>696 (700-1)  | 2780-2 1/2<br>856 (900-2 1/2) | NA                         |

NEW TOWN, NORTH DAKOTA  
Orig 31DEC20

47°58'N-102°29'W

NEW TOWN MUNI (Ø5D)  
RNAV (GPS) RWY 30

NC-1, 10 JUL 2025 to 07 AUG 2025

NC-1, 10 JUL 2025 to 07 AUG 2025

NEW TOWN, NORTH DAKOTA

AL-10795 (FAA-O)

25219

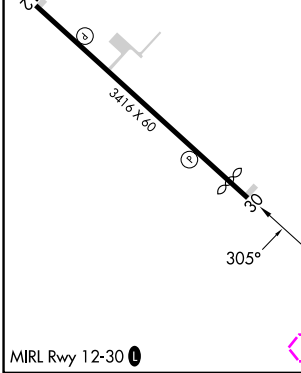
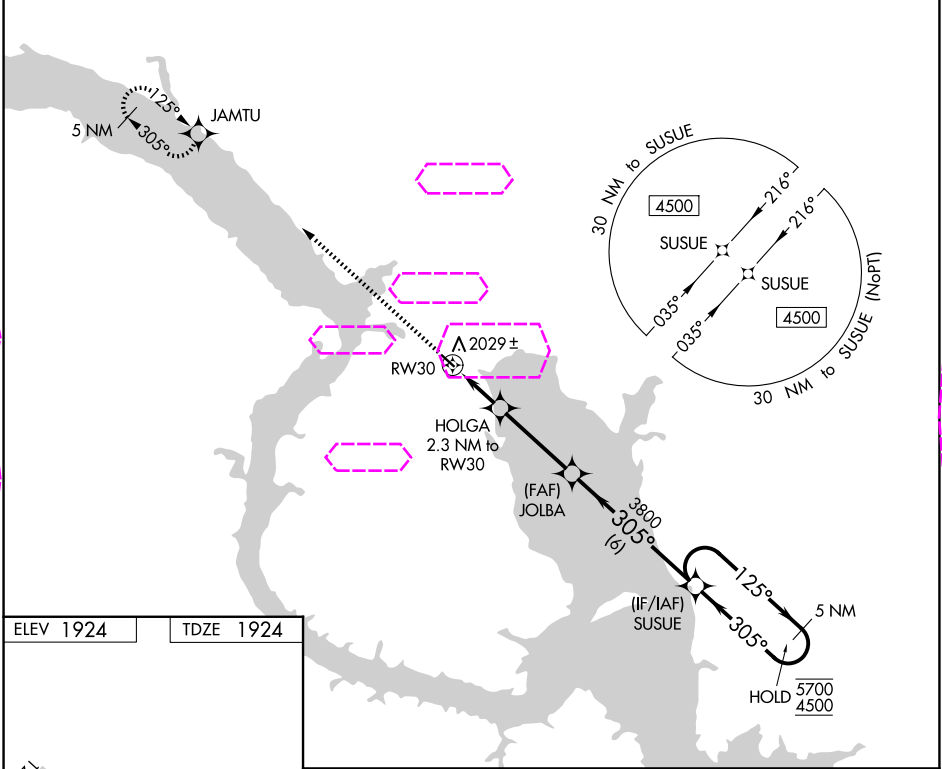
|         |          |      |
|---------|----------|------|
| APP CRS | Rwy Ldg  | 3120 |
| 305°    | TDZE     | 1924 |
|         | Apt Elev | 1924 |

# RNAV (GPS) RWY 30

NEW TOWN MUNI (Ø5D)

|           |   |
|-----------|---|
| RNP APCH. | MISSED APPROACH: Climb to 4500 direct JAMTU and hold.   |
| ▼<br>▲ NA | Use Stanley altimeter setting, when not received, use Tioga altimeter setting and increase all MDAs 40 feet. Increase Circling Cat C visibility ¼ SM. |

|                                   |                 |
|-----------------------------------|-----------------|
| MINNEAPOLIS CENTER<br>127.6 279.6 | CTAF<br>122.9 0 |
|-----------------------------------|-----------------|



|          |                           |  |                               |                            |
|----------|---------------------------|--|-------------------------------|----------------------------|
| 4500     | JAMTU                     | VGSI and descent angles not coincident (VGSI Angle 3.00/TCH 31). | SUSUE                         | 5 NM Holding Pattern       |
|          |                           |  |                               | 125° → 5700<br>← 305° 4500 |
|          | HOLGA<br>2.3 NM to RWY 30 | JOLBA  |                               |                            |
|          |                           | 3.00° TCH 35   |                               |                            |
|          | RWY 30                    |  |                               |                            |
|          | 2.3 NM                    | 3.5 NM   | 6 NM                          |                            |
|          |                           |  |                               |                            |
| CATEGORY | A                         | B  | C                             | D                          |
| LNAV MDA | 2380-1                    | 456 (500-1)  | 2380-1 3/8<br>456 (500-1 3/8) | NA                         |
| CIRCLING | 2520-1<br>596 (600-1)     | 2620-1<br>696 (700-1)  | 2780-2 1/2<br>856 (900-2 1/2) | NA                         |

NEW TOWN, NORTH DAKOTA  
Orig 31DEC20

47°58'N-102°29'W

NEW TOWN MUNI (Ø5D)  
RNAV (GPS) RWY 30

NC-1, 07 AUG 2025 to 04 SEP 2025

NC-1, 07 AUG 2025 to 04 SEP 2025