

NEW TOWN, NORTH DAKOTA

AL-10795 (FAA-O)

20366

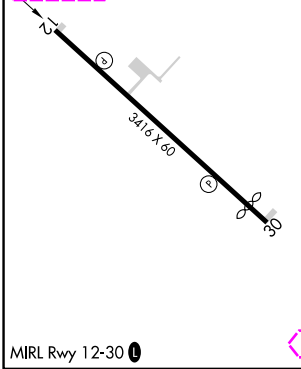
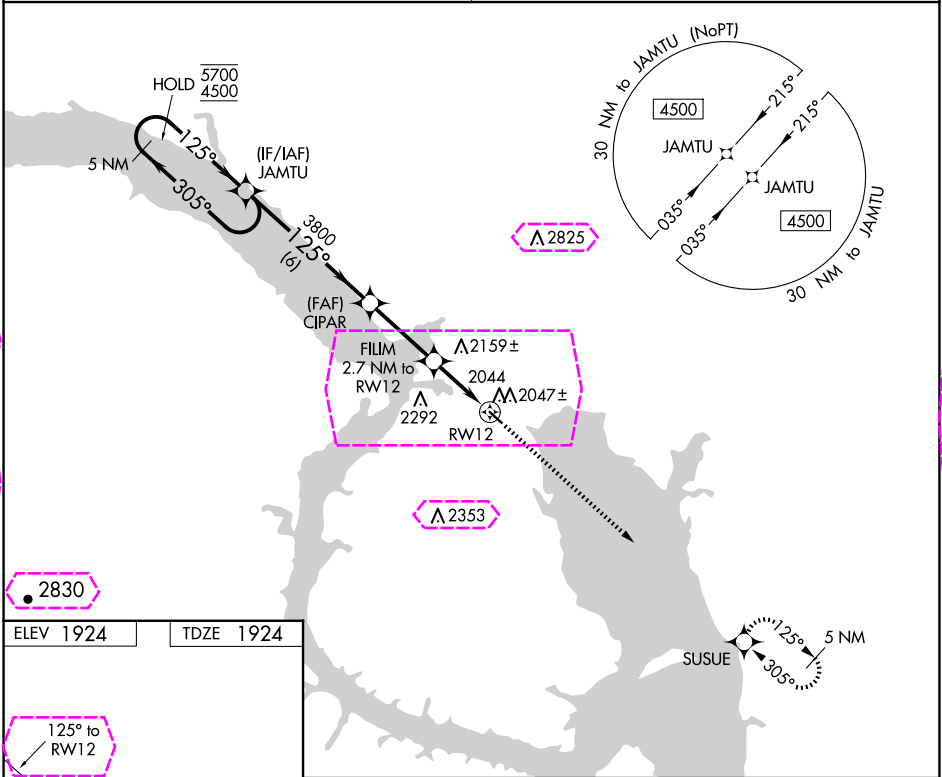
| | | |
|---------|----------|------|
| APP CRS | Rwy Idg | 3416 |
| 125° | TDZE | 1924 |
| | Apt Elev | 1924 |

RNAV (GPS) RWY 12

NEW TOWN MUNI (Ø5D)

| | |
|-----------|--|
| RNP APCH. | MISSED APPROACH: Climb to 4500 direct SUSUE and hold. |
| ▼ ▲ NA | Use Stanley altimeter setting, when not received, use Tioga altimeter setting and increase all MDAs 40 feet. Increase Cat C visibilities ¼ SM. Rwy 12 helicopter visibility reduction below ¾ SM NA. |

| | |
|-----------------------------------|-----------------|
| MINNEAPOLIS CENTER 127.6 279.6 | CTAF 122.9 0 |
|-----------------------------------|-----------------|



| | | | | | |
|---------------------------|-----------------------|-----------------------|-------------------------------|----------------|-------|
| 5 NM Holding Pattern | | | | 4500 | SUSUE |
| 5700 ← 305° → 125° → 3800 | | | | ↑ | ✧ |
| 3800 | | | | 3.00° ≥ TCH 40 | |
| FILM 2.7 NM to RWY 12 | | | | 2800 | |
| RWY 12 | | | | 2.7 NM | |
| CATEGORY | A | B | C | D | |
| LNAV MDA | 2440-1 | 516 (600-1) | 2440-1 3/8 516 (600-1 3/8) | NA | |
| ◻ CIRCLING | 2520-1 596 (600-1) | 2620-1 696 (700-1) | 2780-2 1/2 856 (900-2 1/2) | NA | |

NEW TOWN, NORTH DAKOTA
Orig 31DEC20

47°58'N-102°29'W

NEW TOWN MUNI (Ø5D)
RNAV (GPS) RWY 12

NC-1, 10 JUL 2025 to 07 AUG 2025

NC-1, 10 JUL 2025 to 07 AUG 2025

NEW TOWN, NORTH DAKOTA

AL-10795 (FAA-O)

25219

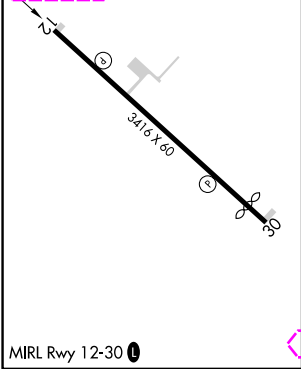
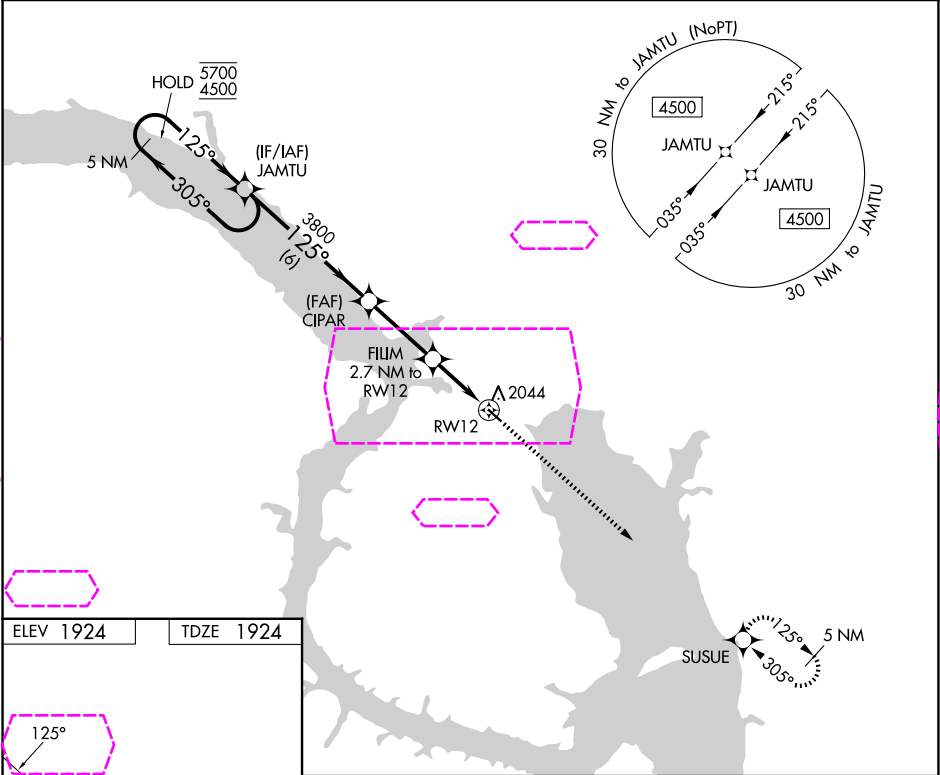
| | | |
|---------|----------|------|
| APP CRS | Rwy Ldg | 3416 |
| 125° | TDZE | 1924 |
| | Apt Elev | 1924 |

RNAV (GPS) RWY 12

NEW TOWN MUNI (Ø5D)

| | |
|-----------|--|
| RNP APCH. | MISSED APPROACH: Climb to 4500 direct SUSUE and hold. |
| ▼ ▲ NA | Use Stanley altimeter setting, when not received, use Tioga altimeter setting and increase all MDAs 40 feet. Increase Cat C visibilities ¼ SM. Rwy 12 helicopter visibility reduction below ¾ SM NA. |

| | |
|-----------------------------------|-----------------|
| MINNEAPOLIS CENTER 127.6 279.6 | CTAF 122.9 0 |
|-----------------------------------|-----------------|



| | | | | | | | |
|----------------------|--------------------|--|----------------------------|------|----------------------------|-------|----|
| | | | | 4500 | | SUSUE | |
| 5 NM Holding Pattern | | | | ↑ | | ✦ | |
| 5700 ← 305° → 4500 | | | | | | | |
| 125° → | | | | | | | |
| 125° | | | | | | | |
| 3800 | | | | | | | |
| 3.00° TCH 40 | | | | | | | |
| 2800 | | | | | | | |
| 6 NM | | | | | | | |
| 3.1 NM | | | | | | | |
| 2.7 NM | | | | | | | |
| CATEGORY | A | | B | | C | | D |
| LNAV MDA | 2440-1 516 (600-1) | | 2440-1 3/8 516 (600-1 3/8) | | | | NA |
| CIRCLING | 2520-1 596 (600-1) | | 2620-1 696 (700-1) | | 2780-2 1/2 856 (900-2 1/2) | | NA |

NEW TOWN, NORTH DAKOTA
Orig 31DEC20

47°58'N-102°29'W

NEW TOWN MUNI (Ø5D)
RNAV (GPS) RWY 12

NC-1, 07 AUG 2025 to 04 SEP 2025

NC-1, 07 AUG 2025 to 04 SEP 2025