

KILLDEER, NORTH DAKOTA

AL-10791 (FAA-O)

25219

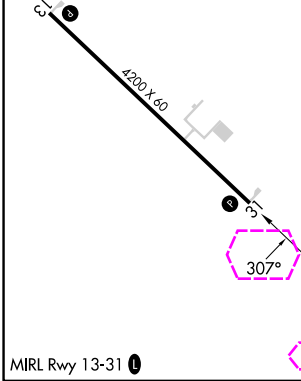
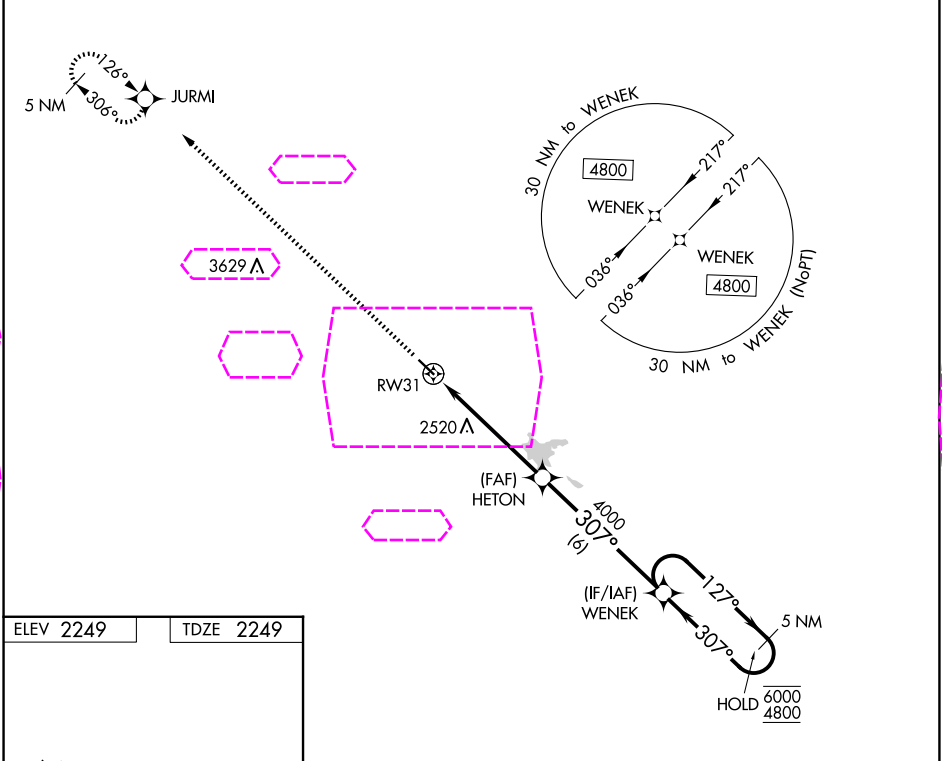
APP CRS	Rwy Ldg	4200
307°	TDZE	2249
	Apt Elev	2249

RNAV (GPS) RWY 31

DUNN COUNTY WEYDAHL FLD (9Y1)

RNP APCH.	MISSED APPROACH: Climb to 4800 direct JURMI and hold.
▼ ▲ NA	Use Watford City altimeter setting, when not received, use Dickinson altimeter setting: increase all MDA's 40 feet and visibility Cat B ¼ SM; increase Circling visibility Cat C ¼ SM.

AWOS-3PT 118.525	MINNEAPOLIS CENTER 124.25 236.825	CTAF 122.9 0
---------------------	--------------------------------------	-----------------



4800

↑

JURMI

✧

5 NM Holding Pattern

WENЕК

127° → 6000

← 307° 4800

HETON

307°

4000

3.00°

TCH 40

RW31

5.4 NM

6 NM

CATEGORY	A	B	C	D
LNAV MDA	2960-1	711 (800-1)	2960-2 711 (800-2)	NA
CIRCLING	2960-1	711 (800-1)	2960-2 711 (800-2)	NA

KILLDEER, NORTH DAKOTA
Orig 28JAN21

47°23'N-102°46'W

DUNN COUNTY WEYDAHL FLD (9Y1)
RNAV (GPS) RWY 31

NC-1, 07 AUG 2025 to 04 SEP 2025

NC-1, 07 AUG 2025 to 04 SEP 2025