

KILLDEER, NORTH DAKOTA

AL-10791 (FAA-O)

24193

APP CRS	Rwy Idg	4200
126°	TDZE	2249
	Apt Elev	2249

RNAV (GPS) RWY 13

DUNN COUNTY WEYDAHL FLD (9Y1)

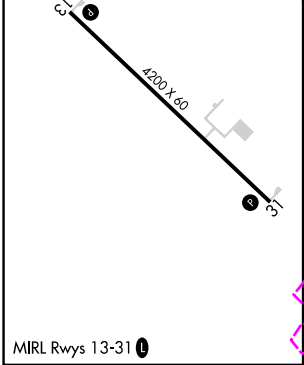
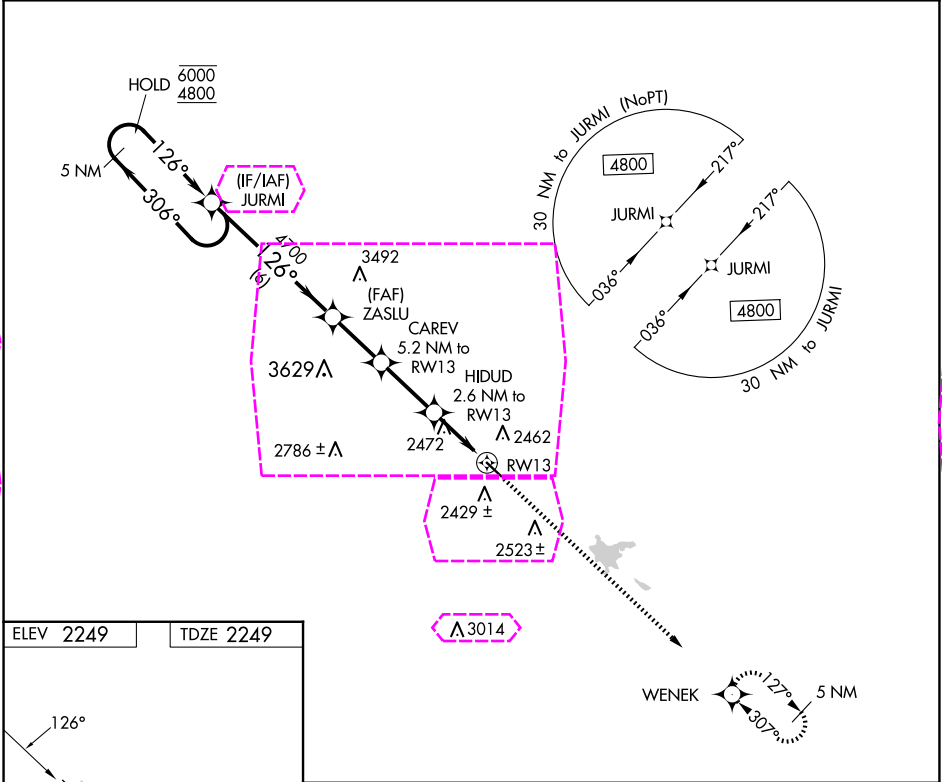
RNP APCH:

▽ Use Watford City altimeter setting, when not received, use Dickinson altimeter setting: increase all MDA's 40 feet and Cat C visibility 1/8 SM. Increase Circling visibility Cat C 1/4 SM.

▲ NA

MISSED APPROACH: Climb to 4800 direct WENEK and hold.

AWOS-3PT 118.525	MINNEAPOLIS CENTER 124.25 236.825	CTAF 122.90
---------------------	--------------------------------------	----------------



5 NM Holding Pattern JURMI				4800	WENEK
6000 ← 306° 126° → 4700 3940 3100					
ZASLU CAREV 5.2 NM to RWY 13 TCH 35 3.00°				HIDUD 2.6 NM to RWY 13	RWY 13
6 NM 2.4 NM 2.6 NM 2.6 NM					
CATEGORY	A	B	C	D	
LNNAV MDA	2820-1	571 (600-1)	2820-1 5/8 571 (600-1 1/8)	NA	
CIRCLING	2880-1 631 (700-1)	2900-1 651 (700-1)	2960-2 711 (800-2)	NA	

KILLDEER, NORTH DAKOTA

AL-10791 (FAA-O)

25219

APP CRS	Rwy Ldg	4200
126°	TDZE	2249
	Apt Elev	2249

RNAV (GPS) RWY 13

DUNN COUNTY WEYDAHL FLD (9Y1)

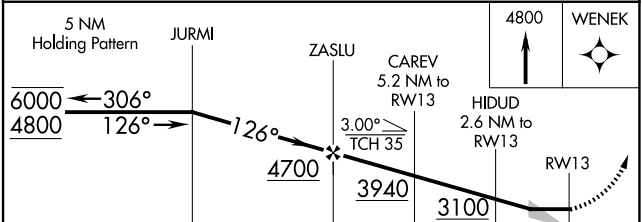
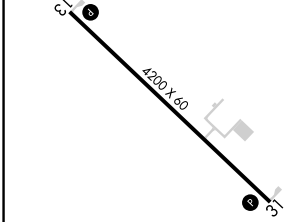
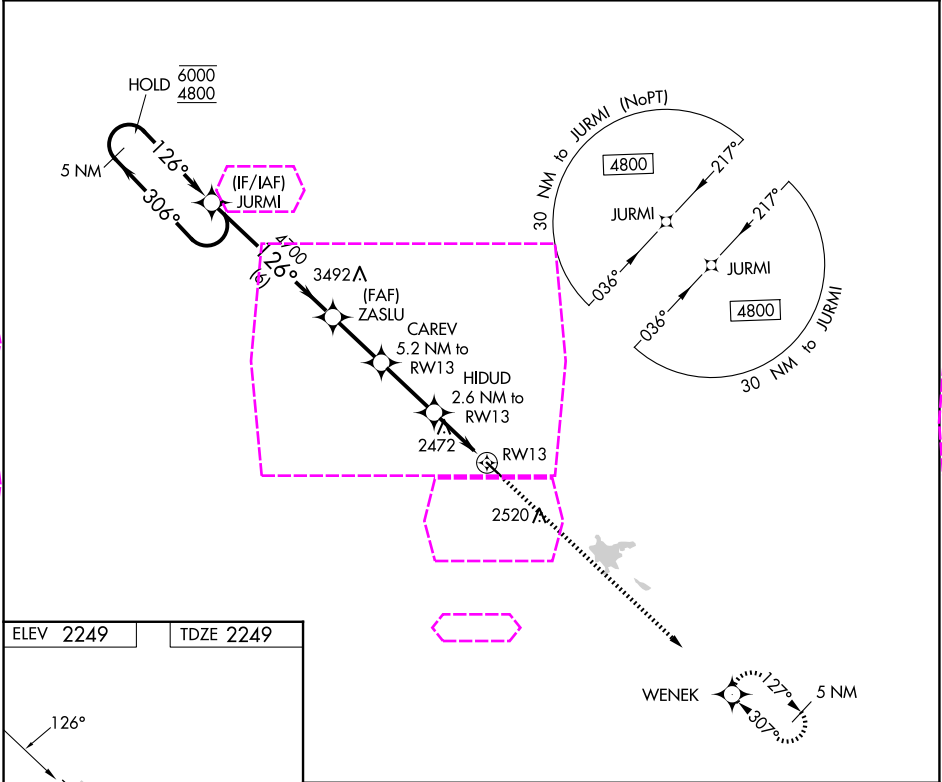
RNP APCH:

▽ Use Watford City altimeter setting, when not received, use Dickinson altimeter setting: increase all MDA's 40 feet and Cat C visibility 1/8 SM. Increase Circling visibility Cat C 1/4 SM.

▲ NA

MISSED APPROACH: Climb to 4800 direct WENEK and hold.

AWOS-3PT 118.525	MINNEAPOLIS CENTER 124.25 236.825	CTAF 122.90
---------------------	--------------------------------------	----------------



CATEGORY	A	B	C	D
RNAV MDA	2820-1	571 (600-1)	2820-1 5/8 571 (600-1 5/8)	NA
CIRCLING	2880-1 631 (700-1)	2900-1 651 (700-1)	2960-2 711 (800-2)	NA

MIRL Rwy 13-31

KILLDEER, NORTH DAKOTA
Orig 28JAN21

47°23'N-102°46'W

DUNN COUNTY WEYDAHL FLD (9Y1)
RNAV (GPS) RWY 13

NC-1, 07 AUG 2025 to 04 SEP 2025

NC-1, 07 AUG 2025 to 04 SEP 2025