

WAAS CH 90537 W03A	APP CRS 032°	Rwy Idg TDZE Apt Elev	5598 5157 5193
--	------------------------	-----------------------------	---

RNAV (GPS) RWY 3
BLAKE FLD (AJZ)

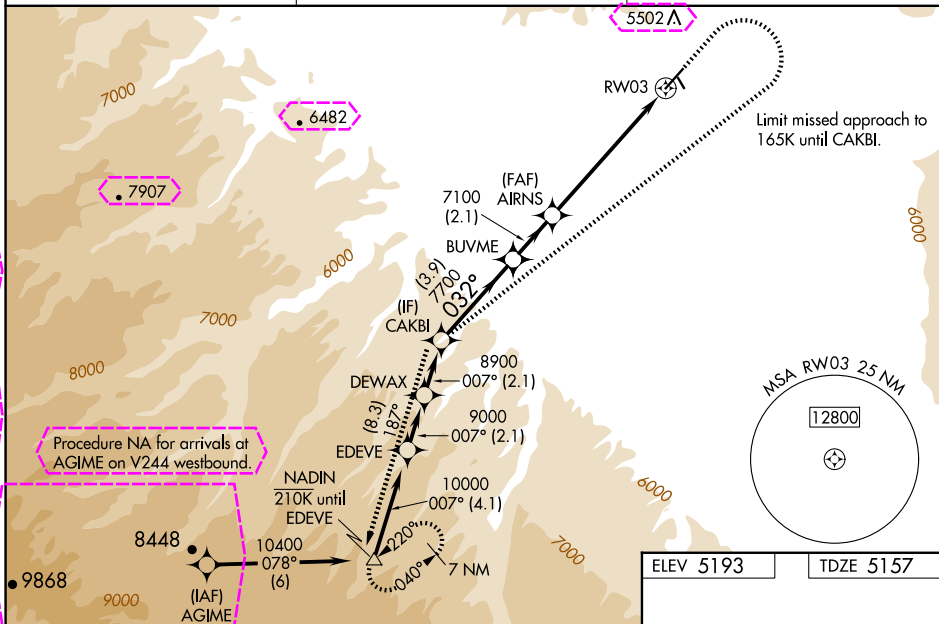
RNP APCH.

Baro-VNAV NA when using Montrose altimeter setting. For uncompensated Baro-VNAV systems, procedure NA below -25°C or above 54°C. When local altimeter setting not received, use Montrose altimeter setting: increase #LPV DA to 5529 feet and visibility all Cats ¾ SM, increase LPV DA to 5670 feet and visibility all Cats ½ SM, increase LNAV/VNAV DA to 5979 feet and visibility all Cats ½ SM. Increase all MDA 140 feet and visibility Cat B ¼ SM, Cat C ½ SM and Circling Cat A ½ SM. VDP NA when using Montrose altimeter setting.

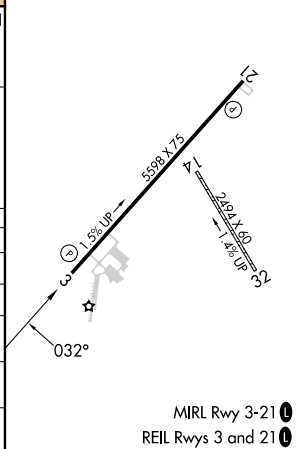
MISSED APPROACH: Climb to 7000 then climbing right turn to 11600 direct CAKBI and on track 187° to NADIN and hold, continue climb-in-hold to 11600.

Missed approach requires minimum climb of 250 feet per NM to 6900.

AWOS-3 134.0	DENVER CENTER 127.1 343.65	UNICOM 122.8 (CTAF) 0
------------------------	--------------------------------------	---------------------------------



CATEGORY	A	B	C	D
#LPV DA	5407-1	250 (300-1)		NA
LPV DA	5548-1½	391 (400-1½)		NA
RNAV/ VNAV	5857-2	700 (700-2)		NA
RNAV MDA	5840-1	683 (700-1)	5840-2 683 (700-2)	NA
CIRCLING	5900-1 707 (800-1)	6340-1½ 1147 (1200-1½)	6680-3 1487 (1500-3)	NA



DELTA, COLORADO

Orig-A 20JUN19

38°47'N-108°04'W

BLAKE FLD (A.JZ)

CDC/DMM

RNAV (GPS) RWY 3

SW-1, 10 JUL 2025 to 07 AUG 2025

SW-1, 10 JUL 2025 to 07 AUG 2025

DELTA, COLORADO

AL-10760 (FAA)

25219

WAAS CH 90537 W03A	APP CRS 032°	Rwy Ldg TDZE Apt Elev	5598 5157 5193
--	------------------------	-----------------------------	---

RNAV (GPS) RWY 3

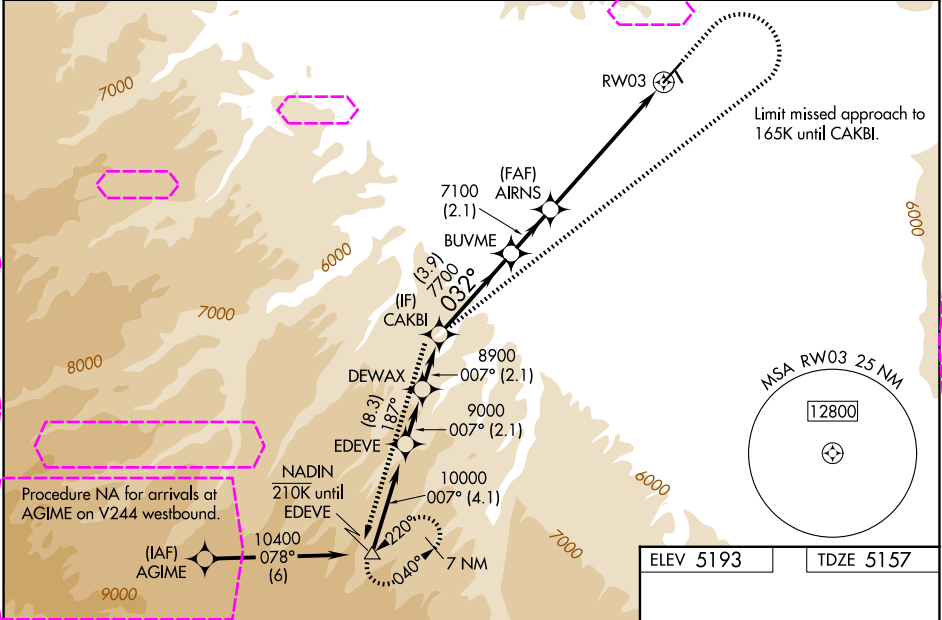
BLAKE FLD (AJZ)

RNP APCH

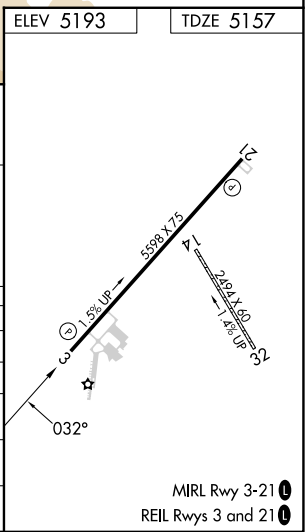
▼ Baro-VNAV NA when using Montrose altimeter setting. For uncompensated Baro-VNAV systems, procedure NA below -25°C or above 54°C. When local altimeter setting not received, use Montrose altimeter setting: increase #LPV DA to 5529 feet and visibility all Cats 3/8 SM, increase LPV DA to 5670 feet and visibility all Cats 1/2 SM, increase LNAV/VNAV DA to 5979 feet and visibility all Cats 1/2 SM. Increase all MDA 140 feet and visibility Cat B 1/4 SM, Cat C 1/2 SM and Circling Cat A 1/4 SM. VDP NA when using Montrose altimeter setting. Circling NA to Rwy 14 and 32.
Missed approach requires minimum climb of 250 feet per NM to 6900.

MISSED APPROACH: Climb to 7000 then climbing right turn to 11600 direct CAKBI and on track 187° to NADIN and hold, continue climb-in-hold to 11600.

AWOS-3 134.0	DENVER CENTER 127.1 343.65	UNICOM 122.8 (CTAF) 0
------------------------	--------------------------------------	---------------------------------



CATEGORY	A	B	C	D
#LPV DA	5407-1	250 (300-1)		NA
LPV DA	5548-1 1/2	391 (400-1 1/2)		NA
LNAV/VNAV DA	5857-2	700 (700-2)		NA
LNAV MDA	5840-1	683 (700-1)	5840-2 683 (700-2)	NA
CIRCLING	5900-1 707 (800-1)	6340-1 1/2 1147 (1200-1 1/2)	6680-3 1487 (1500-3)	NA



DELTA, COLORADO

Orig-A 20JUN19

38°47'N-108°04'W

BLAKE FLD (AJZ)

RNAV (GPS) RWY 3