

HARDINSBURG, KENTUCKY

AL-10748 (FAA)

25219

WAAS CH 90442 W10A	APP CRS 101°	Rwy Ldg TDZE 728 Apt Elev 732
----------------------------------------	------------------------	---------------------------------------------------

RNAV (GPS) RWY 10

BRECKINRIDGE COUNTY (I93)

RNP APCH.

NA Rwy 10 helicopter visibility reduction below $\frac{3}{4}$ SM NA.
Baro-VNAV NA. Use Fort Knox altimeter setting, when not received,
use Elizabethtown altimeter setting and increase LPV DA to 1043,
LNAV/VNAV DA to 1191 and all MDA 20 feet.

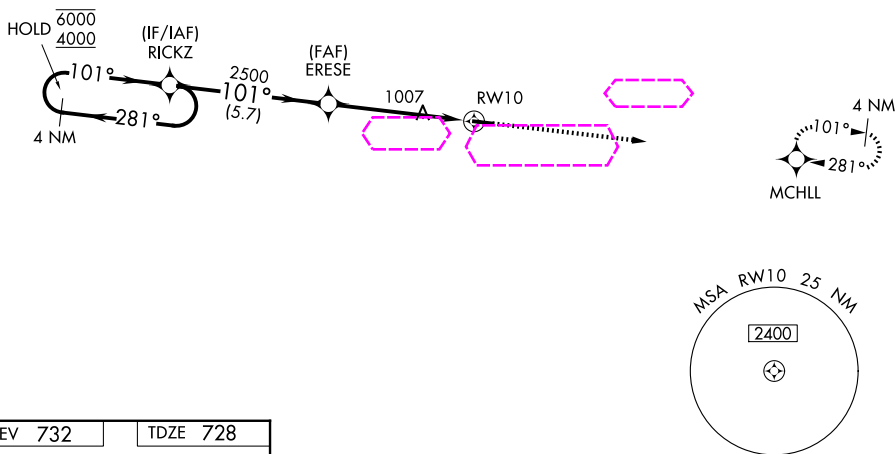
MISSED APPROACH: Climb to
4000 direct MCHLL and hold,
continue climb-in-hold to 4000.

AWOS-3PT
123.625

KFTK ATIS ★
109.6

LOUISVILLE APP CON
123.675 327.0

CTAF
122.9 0

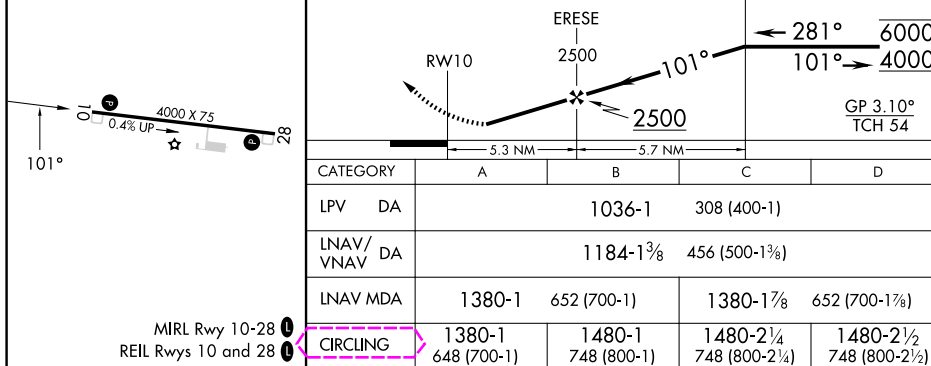


ELEV 732 TDZE 728



VGSI and RNAV glidepath not coincident
(VGSI Angle 3.10/TCH 34).

4 NM
Holding Pattern



CATEGORY	A	B	C	D
LPV DA	1036-1		308 (400-1)	
LNAV/VNAV DA	1184-1 $\frac{3}{8}$		456 (500-1 $\frac{3}{8}$)	
LNAV MDA	1380-1	652 (700-1)	1380-1 $\frac{7}{8}$	652 (700-1 $\frac{7}{8}$)
CIRCLING	1380-1 648 (700-1)	1480-1 748 (800-1)	1480-2 $\frac{1}{4}$ 748 (800-2 $\frac{1}{4}$)	1480-2 $\frac{1}{2}$ 748 (800-2 $\frac{1}{2}$)

MIRL Rwy 10-28
REIL Rwy 10 and 28

HARDINSBURG, KENTUCKY
Orig 25APR19

37°47'N-86°26'W

BRECKINRIDGE COUNTY (I93)
RNAV (GPS) RWY 10

SE-1, 07 AUG 2025 to 04 SEP 2025

SE-1, 07 AUG 2025 to 04 SEP 2025