

CYNTHIANA, KENTUCKY

AL-10745 (FAA)

23222

WAAS CH 42537 W29A	APP CRS 292°	Rwy Idg 2756 TDZE 721 Apt Elev 721
--	------------------------	---

RNAV (GPS) RWY 29

CYNTHIANA-HARRISON COUNTY (Ø18)

RNP APCH.

▼ Procedure NA at night. Rwy 29 helicopter visibility reduction below 1 SM NA. Use Georgetown altimeter setting; when not received, use Lexington altimeter setting and increase all MDA 40 feet.

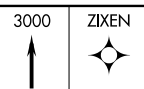
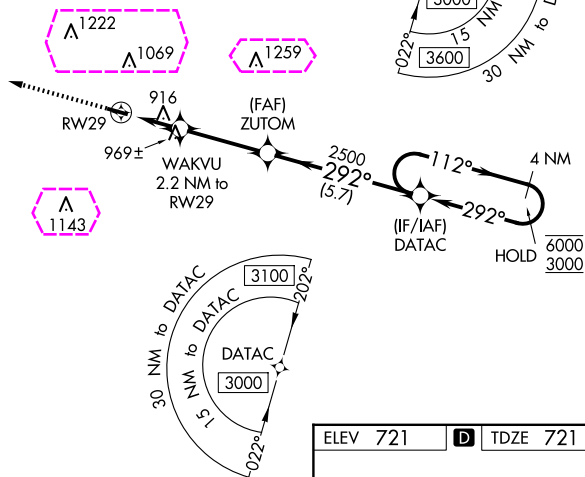
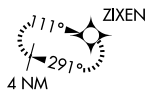
▲ NA

MISSED APPROACH: Climb to 3000 direct ZIXEN and hold.

27K AWOS-3
119.975

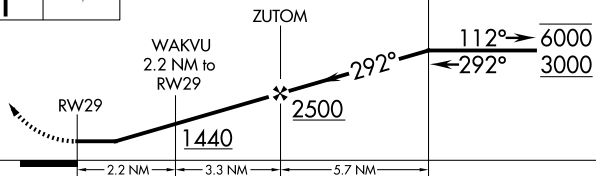
LEXINGTON APP CON
120.15 259.3 (040°-220°)
120.75 298.9 (221°-039°)

UNICOM
122.8 (CTAF) **Ø**



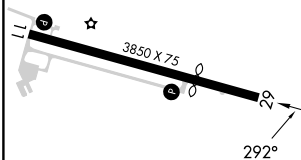
Visual Segment - Obstacles.

DATA C 4 NM Holding Pattern



CATEGORY	A	B	C	D
LP MDA	1240-1	519 (600-1)	NA	
LNAV MDA	1280-1	559 (600-1)	NA	
CIRCLING	1340-1 619 (700-1)	1560-1¼ 839 (900-1¼)	NA	

ELEV 721 **D** TDZE 721



MIRL Rwy 11-29 **Ø**
REIL Rwy 11 and 29 **Ø**

CYNTHIANA, KENTUCKY

Orig-B 17JUN21

38°22'N-84°17'W

CYNTHIANA-HARRISON COUNTY (Ø18)

RNAV (GPS) RWY 29

SE-1, 10 JUL 2025 to 07 AUG 2025

SE-1, 10 JUL 2025 to 07 AUG 2025

CYNTHIANA, KENTUCKY

AL-10745 (FAA)

25219

WAAS CH 42537 W29A	APP CRS 292°	Rwy Ldg 2756 TDZE 721 Apt Elev 721
--	------------------------	--

RNAV (GPS) RWY 29

CYNTHIANA-HARRISON COUNTY (Ø18)

RNP APCH.

▼ Procedure NA at night. Rwy 29 helicopter visibility reduction below 1 SM NA. Use Georgetown altimeter setting; when not received, use Lexington altimeter setting and increase all MDA 40 feet.

▲ NA

MISSED APPROACH: Climb to 3000 direct ZIXEN and hold.

27K AWOS-3
119.975

LEXINGTON APP CON
120.15 259.3 (040°-220°)
120.75 298.9 (221°-039°)

UNICOM
122.8 (CTAF) **Ø**



RW29

916

969±

WAKVU
2.2 NM to
RW29

(FAF)
ZUTOM

2500
292°
(5.7)

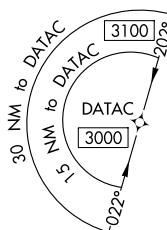
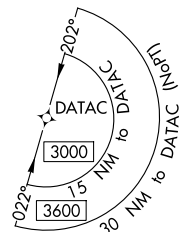
112°

292°

(IF/IAF)
DATA C

4 NM

HOLD
6000
3000



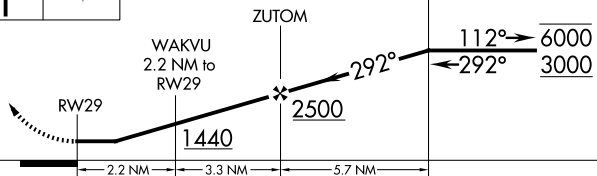
ELEV 721 **D** TDZE 721

3000
↑

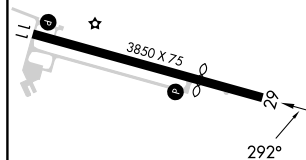


Visual Segment - Obstacles.

DATA C 4 NM
Holding Pattern



CATEGORY	A	B	C	D
LP MDA	1240-1	519 (600-1)	NA	
LNAV MDA	1280-1	559 (600-1)	NA	
CIRCLING	1340-1 619 (700-1)	1560-1¼ 839 (900-1¼)	NA	



MIRL Rwy 11-29 **Ø**
REIL Rwy 11 and 29 **Ø**

CYNTHIANA, KENTUCKY

Orig-B 17JUN21

38°22'N-84°17'W

CYNTHIANA-HARRISON COUNTY (Ø18)

RNAV (GPS) RWY 29

SE-1, 07 AUG 2025 to 04 SEP 2025

SE-1, 07 AUG 2025 to 04 SEP 2025