

CYNTHIANA, KENTUCKY

AL-10745 (FAA)

23222

WAAS CH 62837 W11A	APP CRS 111°	Rwy Idg 3850 TDZE 721 Apt Elev 721
--	------------------------	--

RNAV (GPS) RWY 11
CYNTHIANA-HARRISON COUNTY (ØI8)

RNP APCH.

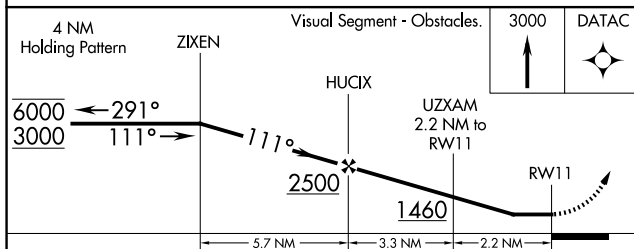
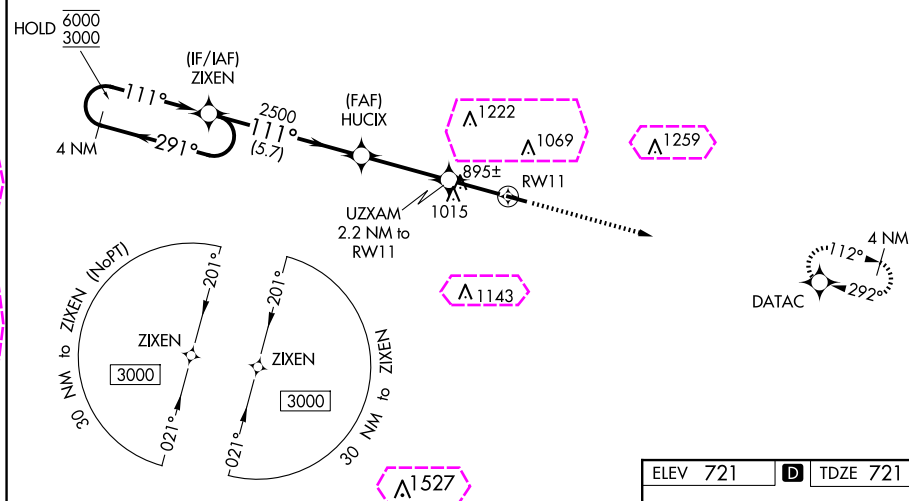
▼ Procedure NA at night. Rwy 11 helicopter visibility reduction below 1 SM NA.
▲ NA Use Georgetown altimeter setting; when not received, use Lexington altimeter setting and increase all MDA 40 feet.

MISSED APPROACH:
Climb to 3000 direct
DATAC and hold.

27K AWOS-3
119.975

LEXINGTON APP CON
120.15 259.3 (040°-220°)
120.75 298.9 (221°-039°)

UNICOM
122.8 (CTAF) **Ø**



CATEGORY	A	B	C	D
LP MDA	1220-1	499 (500-1)	NA	
LNAV MDA	1300-1	579 (600-1)	NA	
CIRCLING	1340-1 619 (700-1)	1560-1¼ 839 (900-1¼)	NA	

CYNTHIANA, KENTUCKY

Orig-B 17JUN21

38°22'N-84°17'W

CYNTHIANA-HARRISON COUNTY (ØI8)

RNAV (GPS) RWY 11

MIRL Rwy 11-29 **Ø**
REIL Rwy 11 and 29 **Ø**

SE-1, 10 JUL 2025 to 07 AUG 2025

SE-1, 10 JUL 2025 to 07 AUG 2025

CYNTHIANA, KENTUCKY

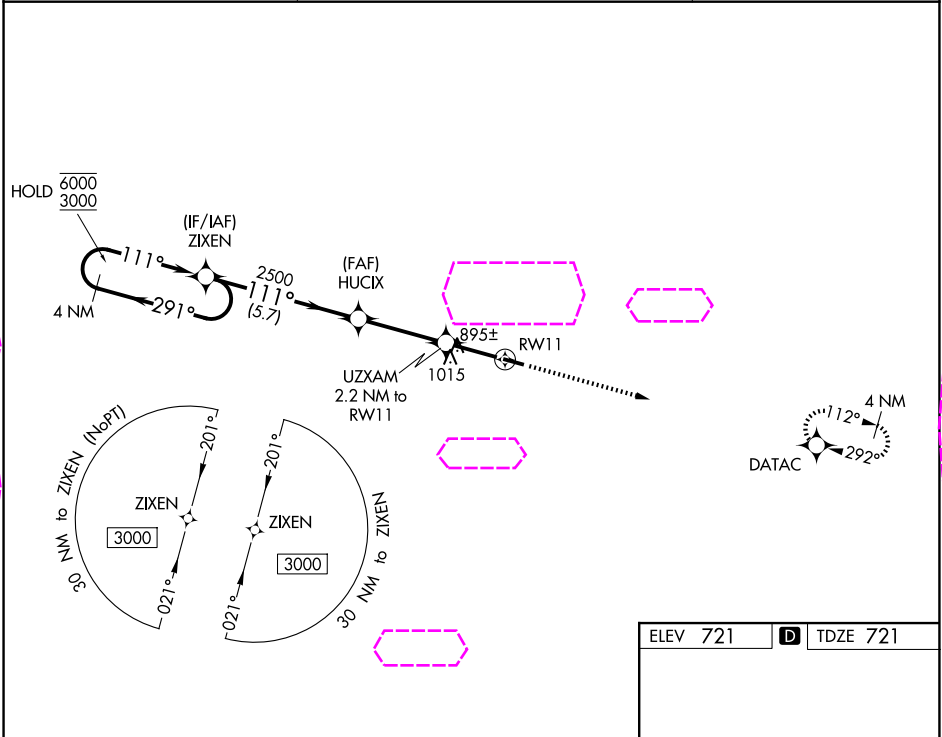
AL-10745 (FAA)

25219

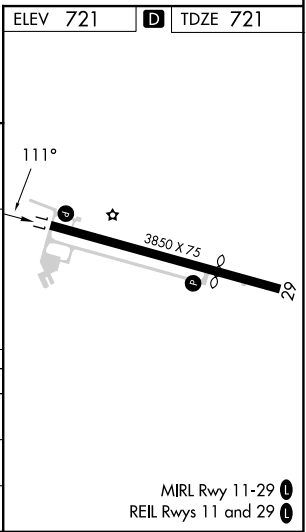
WAAS CH 62837 W11A	APP CRS 111°	Rwy Ldg 3850 TDZE 721 Apt Elev 721
--	------------------------	--

RNAV (GPS) RWY 11
CYNTHIANA-HARRISON COUNTY (ØI8)

RNP APCH: ▼ Procedure NA at night. Rwy 11 helicopter visibility reduction below 1 SM NA. ▲ NA Use Georgetown altimeter setting; when not received, use Lexington altimeter setting and increase all MDA 40 feet.		MISSED APPROACH: Climb to 3000 direct DATAc and hold.
27K AWOS-3 119.975	LEXINGTON APP CON 120.15 259.3 (040°-220°) 120.75 298.9 (221°-039°)	UNICOM 122.8 (CTAF) Ø



4 NM Holding Pattern		Visual Segment - Obstacles.		3000	DATAc
		5.7 NM		3.3 NM	2.2 NM
CATEGORY	A	B	C	D	
LP MDA	1220-1	499 (500-1)	NA		
LNAV MDA	1300-1	579 (600-1)	NA		
CIRCLING	1340-1 619 (700-1)	1560-1¼ 839 (900-1¼)	NA		



CYNTHIANA, KENTUCKY
Orig-B 17JUN21

38°22'N-84°17'W

CYNTHIANA-HARRISON COUNTY (ØI8)
RNAV (GPS) RWY 11

MIRL Rwy 11-29 **Ø**
REIL Rwy 11 and 29 **Ø**

SE-1, 07 AUG 2025 to 04 SEP 2025

SE-1, 07 AUG 2025 to 04 SEP 2025