

CHATOM, ALABAMA

AL-10735 (FAA)

23278

WAAS CH 56535 W30A	APP CRS 301°	Rwy Idg TDZE 129 Apt Elev 166	3802
--	------------------------	---	-------------

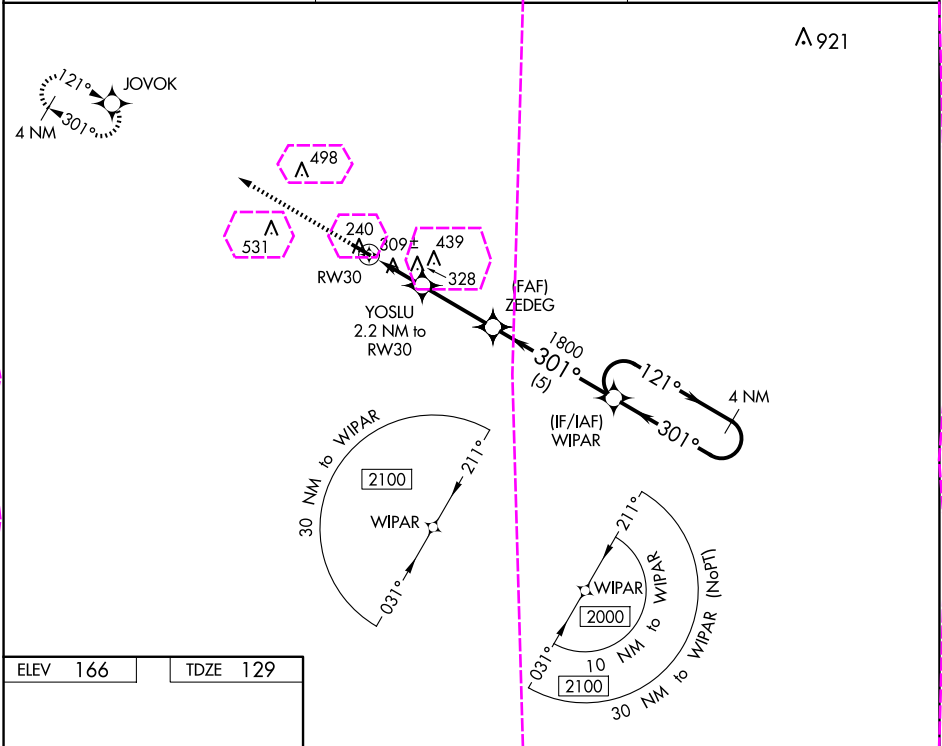
RNAV (GPS) RWY 30

ROY WILCOX (5R.1)

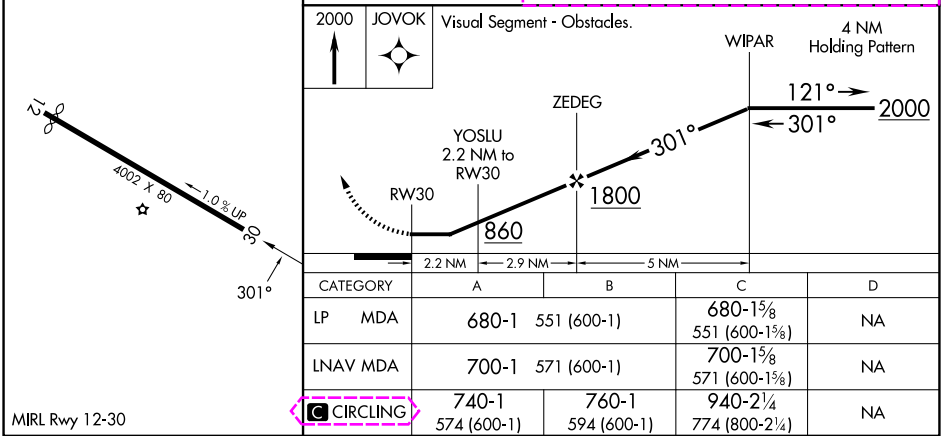
NA DME/DME RNP-0.3 NA. Procedure NA at night. Rwy 30 helicopter visibility reduction below 1 SM NA. Use Mobile Rgnl altimeter setting; when not received, use Hattiesburg Bobby L Chain Muni altimeter setting and increase all MDA 20 feet; increase LNAV Cat C visibility 1/8 SM.

MISSED APPROACH: Climb to 2000 direct JOVOK and hold.

MOB ASOS 124.75 257.85	HOUSTON CENTER 127.65 285.475	UNICOM 122.8 (CTAF)
----------------------------------	---	-------------------------------



ELEV 166	TDZE 129
----------	----------



CHATOM, ALABAMA	ROY WILCOX (5R.1)
Orig-A 27APR17	31°27'N-88°12'W
RNAV (GPS) RWY 30	

CHATOM, ALABAMA

AL-10735 (FAA)

25219

WAAS CH 56535 W30A	APP CRS 301°	Rwy Ldg 3802 TDZE 129 Apt Elev 166
--	------------------------	---

RNAV (GPS) RWY 30

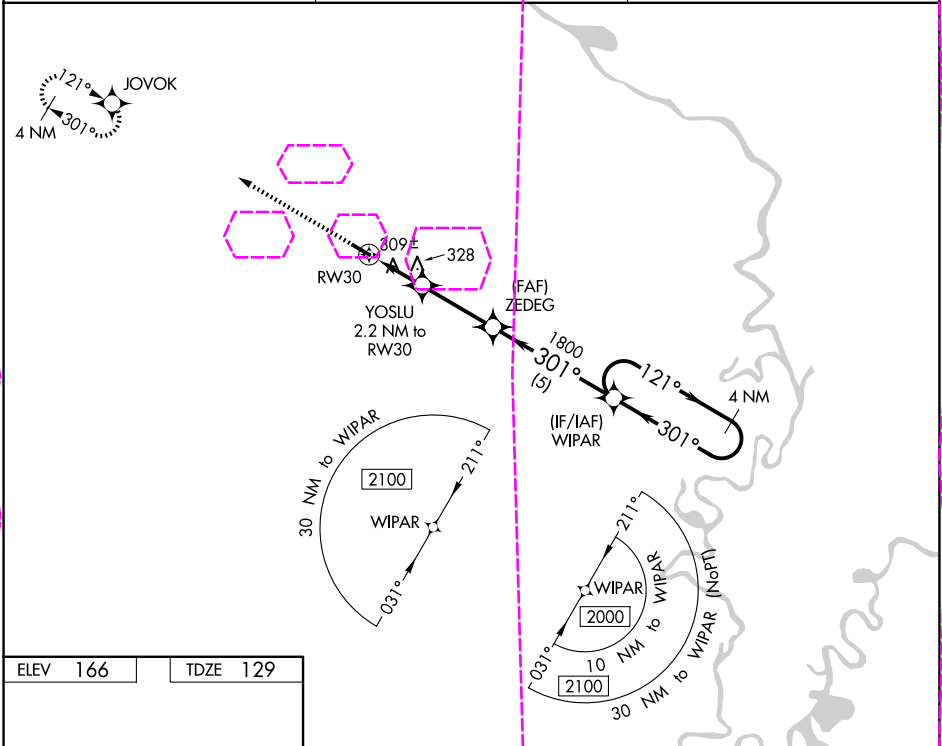
ROY WILCOX (5R1)

▼ DME/DME RNP-0.3 NA. Procedure NA at night. Rwy 30 helicopter visibility reduction below 1 SM NA. Use Mobile Rgnl altimeter setting; when not received, use Hattiesburg Bobby L Chain Muni altimeter setting and increase all MDA 20 feet; increase LNAV Cat C visibility 1/8 SM.

▲ NA

MISSED APPROACH:
Climb to 2000 direct JOVOK and hold.

MOB ASOS 124.75 257.85	HOUSTON CENTER 127.65 285.475	UNICOM 122.8 (CTAF)
----------------------------------	---	-------------------------------



ELEV 166	TDZE 129
----------	----------

Visual Segment - Obstacles.

2000 JOVOK

WIPAR 4 NM Holding Pattern

ZEDEG 1800

YOSLU 2.2 NM to RW30

RW30 860

2.2 NM 2.9 NM 5 NM

CATEGORY	A	B	C	D
LP MDA	680-1	551 (600-1)	680-1 5/8 551 (600-1 5/8)	NA
LNAV MDA	700-1	571 (600-1)	700-1 5/8 571 (600-1 5/8)	NA
CIRCLING	740-1 574 (600-1)	760-1 594 (600-1)	940-2 1/4 774 (800-2 1/4)	NA

MIRL Rwy 12-30

CHATOM, ALABAMA

Orig-A 27APR17

31°27'N-88°12'W

ROY WILCOX (5R1)

RNAV (GPS) RWY 30

SE-4, 07 AUG 2025 to 04 SEP 2025

SE-4, 07 AUG 2025 to 04 SEP 2025