

WAKEENEY, KANSAS

AL-10685 (FAA)

19339

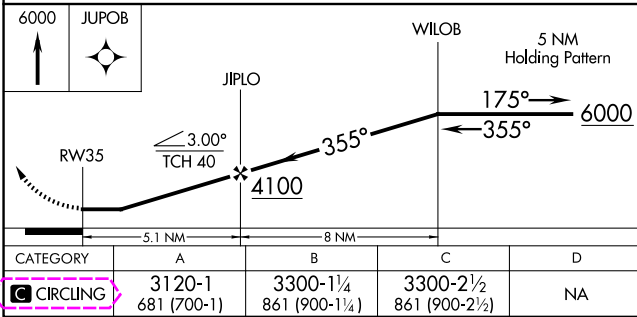
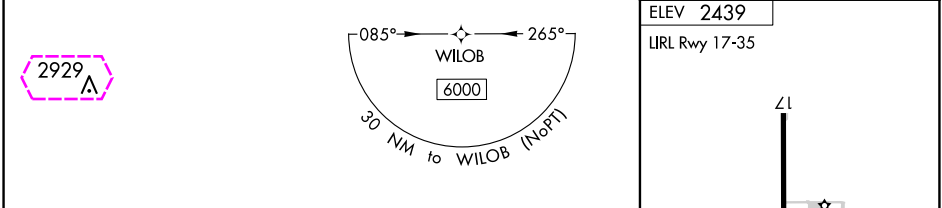
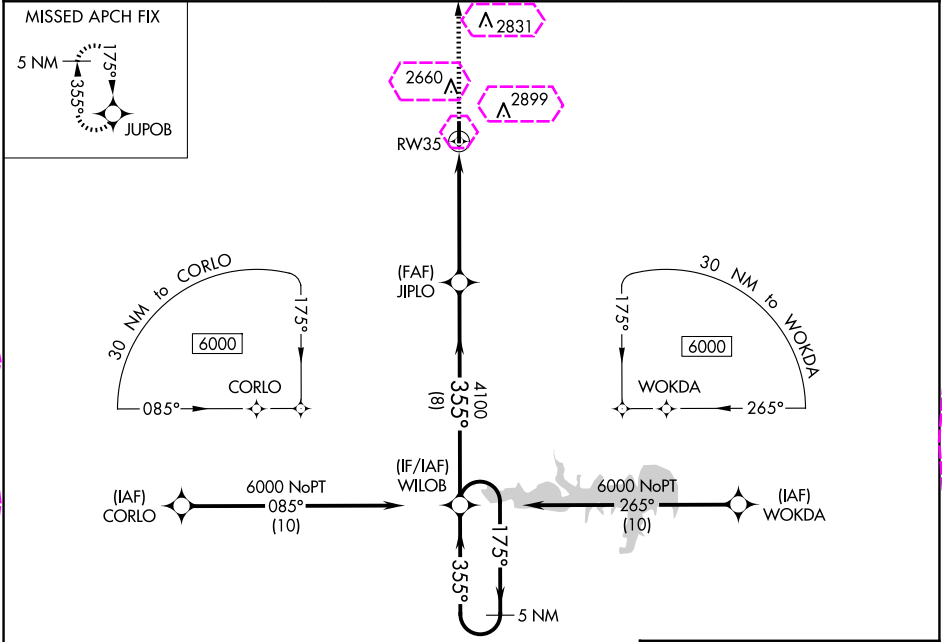
APP CRS 355°	Rwy Idg TDZE Apt Elev N/A N/A 2439
------------------------	--

RNAV (GPS)-B TREGO WAKEENEY (ØH1)

NA DME/DME RNP-0.3 NA. Procedure NA at night. Use Hill City altimeter setting; when not received, use Hays altimeter setting and increase all MDA 40 feet and Cat C visibility ¼ mile. Helicopter visibility reduction below 1 SM NA.

MISSED APPROACH: Climb to 6000 direct JUPOB and hold, continue climb-in-hold to 6000.

HLC ASOS 118.425	DENVER CENTER 132.7 226.675	CTAF 122.9
----------------------------	---------------------------------------	----------------------



WAKEENEY, KANSAS
Orig 10DEC15

39°00'N-99°54'W

TREGO WAKEENEY (ØH1)
RNAV (GPS)-B

NC-2, 10 JUL 2025 to 07 AUG 2025

NC-2, 10 JUL 2025 to 07 AUG 2025

WAKEENEY, KANSAS

AL-10685 (FAA)

25219

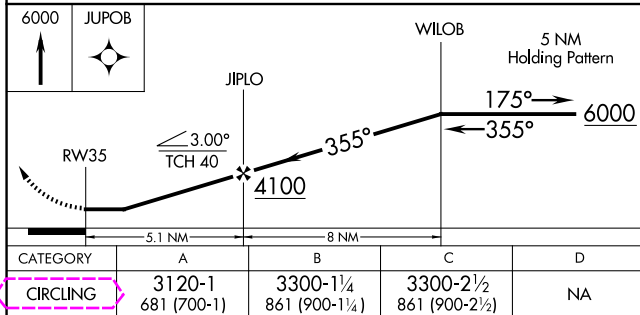
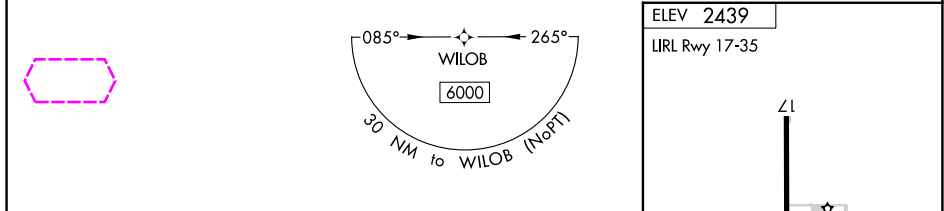
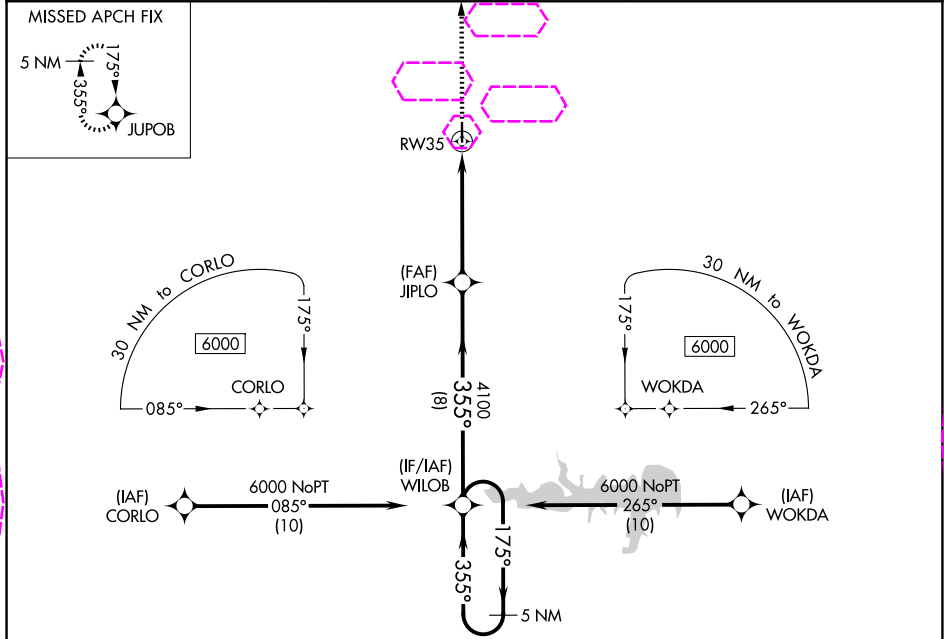
APP CRS 355°	Rwy Ldg TDZE Apt Elev 2439	N/A N/A
------------------------	---	--------------------------

RNAV (GPS)-B TREGO WAKEENEY (ØH1)

NA DME/DME RNP-0.3 NA. Procedure NA at night. Use Hill City altimeter setting; when not received, use Hays altimeter setting and increase all MDA 40 feet and Cat C visibility ½ mile. Helicopter visibility reduction below 1 SM NA.

MISSED APPROACH: Climb to 6000 direct JUPOB and hold, continue climb-in-hold to 6000.

HLC ASOS 118.425	DENVER CENTER 132.7 226.675	CTAF 122.9
----------------------------	---------------------------------------	----------------------



WAKEENEY, KANSAS
Orig 10DEC15

39°00'N-99°54'W

TREGO WAKEENEY (ØH1)
RNAV (GPS)-B

NC-2, 07 AUG 2025 to 04 SEP 2025

NC-2, 07 AUG 2025 to 04 SEP 2025