

WAKEENEY, KANSAS

AL-10685 (FAA)

19339

APP CRS
175°

Rwy Idg **N/A**
TDZE **N/A**
Apt Elev **2439**

RNAV (GPS)-A
TREGO WAKEENEY (ØH1)

▼ DME/DME RNP-0.3 NA. Procedure NA at night. Use Hill City altimeter setting; when not received, use Hays altimeter setting and increase all MDA 40 feet and Cat C visibility ¼ mile. Helicopter visibility reduction below 1 SM NA.

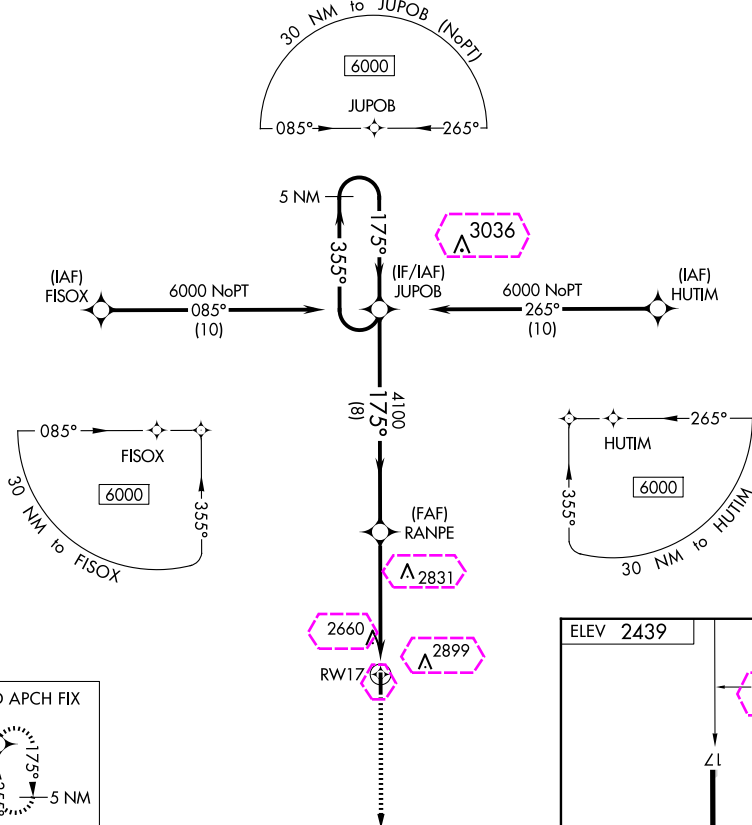
▲ NA

MISSED APPROACH: Climb to 6000 direct WILOB and hold, continue climb-in-hold to 6000.

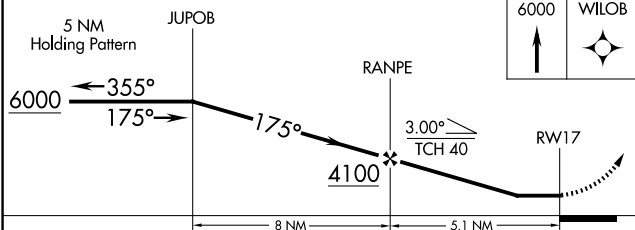
HLC ASOS
118.425

DENVER CENTER
132.7 226.675

CTAF
122.9



MISSED APCH FIX



CATEGORY	A	B	C	D
✈️ CIRCLING	3120-1 681 (700-1)	3300-1¼ 861 (900-1¼)	3300-2½ 861 (900-2½)	NA

LIRL Rwy 17-35

WAKEENEY, KANSAS

Orig 10DEC15

39°00'N-99°54'W

TREGO WAKEENEY (ØH1)

RNAV (GPS)-A

NC-2, 10 JUL 2025 to 07 AUG 2025

NC-2, 10 JUL 2025 to 07 AUG 2025

APP CRS
175°

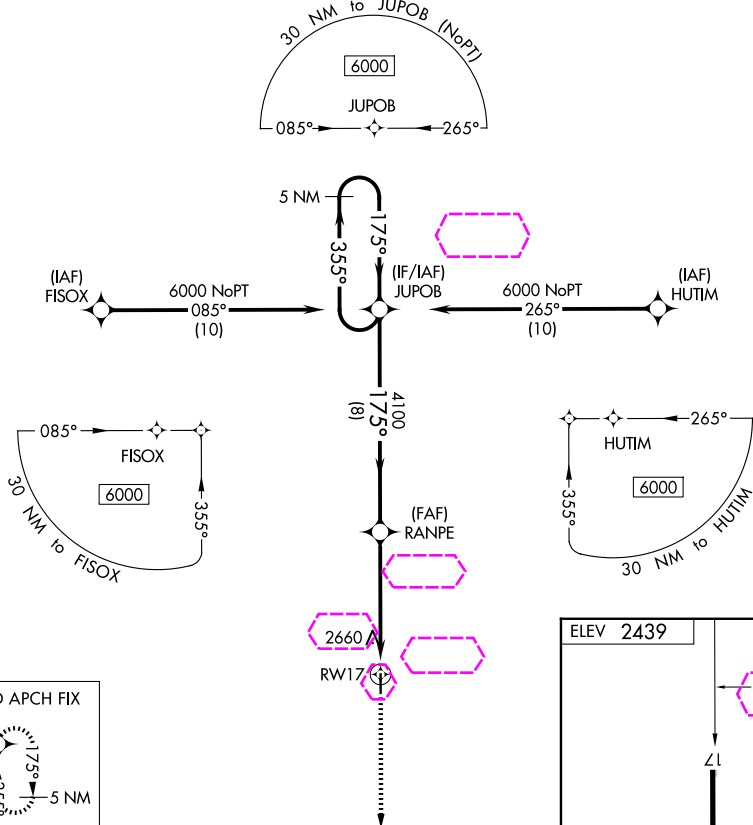
Rwy Ldg	N/A
TDZE	N/A
Apt Elev	2439

RNAV (GPS)-A

T DME/DME RNP-0.3 NA. Procedure NA at night. Use Hill City altimeter setting; when not received, use Hays altimeter setting and increase all MDA 40 feet and Cat C visibility ¼ mile. Helicopter visibility reduction below 1 SM NA.

MISSED APPROACH: Climb to 6000
direct WILOB and hold, continue
climb-in-hold to 6000.

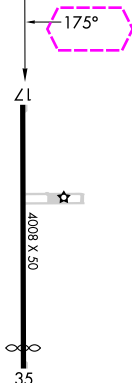
HLC ASOS
118.425

DENVER CENTER
132.7 226.675CTAF
122.9

MISSED APCH FIX



ELEV 2439



5 NM JUPOB
Holding Pattern

6000

RANPE

6000

WILOB

[illegible]

41C

RW17
|

CATEGORY

A
3120-1
681 (700-1)

8 NM
B
3300-1¼
861 (900-1¼)

3300-2½
861 (900-2½)

NA

LIRL Rwy 17-35

WAKEENEY, KANSAS

Orig 10DEC15

TREGO WAKEENEY (ØH1)

RNAV (GPS)-A

39°00'N-99°54'W

NC-2, 07 AUG 2025 to 04 SEP 2025

NC-2, 07 AUG 2025 to 04 SEP 2025