

FORT MORGAN, COLORADO

AL-10684 (FAA)

25219

WAAS CH 86438 W32A	APP CRS 324°	Rwy Ldg TDZE 4546 Apt Elev 4595
--	------------------------	---

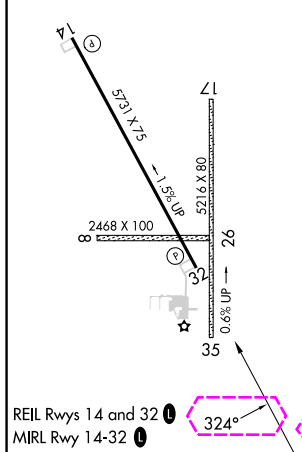
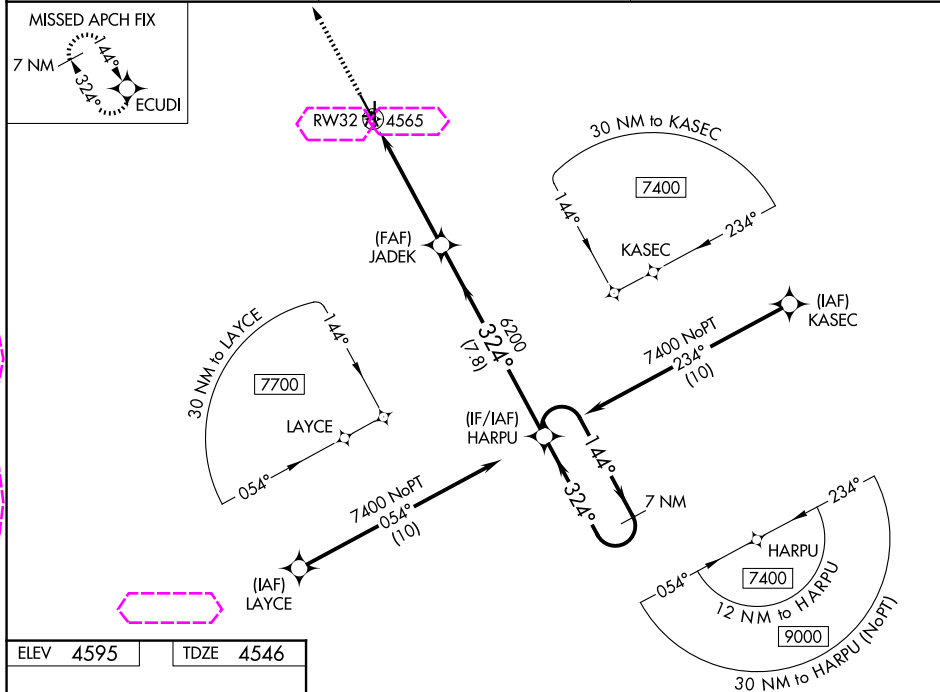
RNAV (GPS) RWY 32

FORT MORGAN MUNI (FMM)

⚠ DME/DME RNP-0.3 NA. When local alimeter setting not received, use Akron alimeter setting: increase all DA to 4879 feet and all visibilities $\frac{1}{8}$ mile; increase all MDA 100 feet and all Cat C and D visibilities $\frac{1}{4}$ mile. Night landing: Rwy 8, 17, 26, 32, 35 NA. Helicopter visibility reduction below 1 SM NA.

MISSED APPROACH:
Climb to 7400 direct ECUDI and hold.

AWOS-3PT 132.95	DENVER CENTER 118.475 225.4	UNICOM 123.05 (CTAF) 0
---------------------------	---------------------------------------	----------------------------------



7400	ECUDI	VGSI and RNAV glidepath not coincident (VGSI Angle 3.00/TCH 27).				7 NM Holding Pattern
JADEK	6200	HARPU	144°	7400	324°	GP 3.00° TCH 52
RW32	6200	5.1 NM	7.8 NM			
CATEGORY	A	B	C	D		
LPV DA	4796-1 250 (300-1)					
LNNAV/VNAV DA	4796-1 250 (300-1)					
LNNAV MDA	4820-1 274 (300-1)					
CIRCLING	5040-1 445 (500-1)	5080-1 485 (500-1)	5120-1½ 525 (600-1½)	5340-2½ 745 (800-2½)		

FORT MORGAN, COLORADO

Amdt 1 04FEB16

40°20'N-103°48'W

FORT MORGAN MUNI (FMM)

RNAV (GPS) RWY 32

SW-1, 07 AUG 2025 to 04 SEP 2025

SW-1, 07 AUG 2025 to 04 SEP 2025