

FORT MORGAN, COLORADO

AL-10684 (FAA)

22251

WAAS CH 86330 W14A	APP CRS 144°	Rwy ldg TDZE Apt Elev	5731 4595 4595
--	------------------------	-----------------------------	---

RNAV (GPS) RWY 14

FORT MORGAN MUNI (FMM)

RNP APCH.

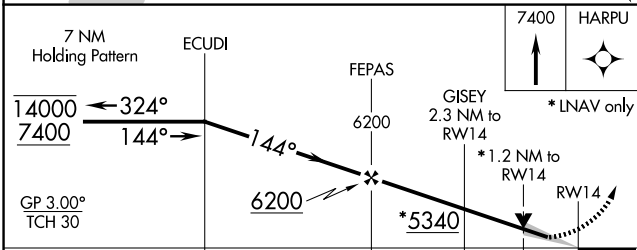
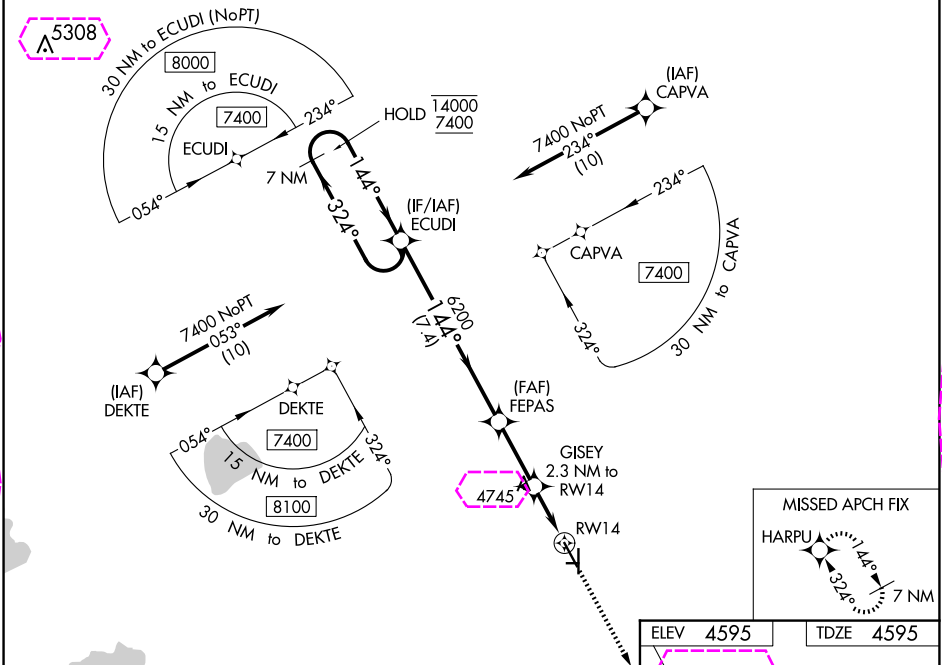
⚠ Circling Rwy 8, 17, 26, 32, 35 NA at night.

MISSED APPROACH: Climb to 7400 direct HARPUR and hold.

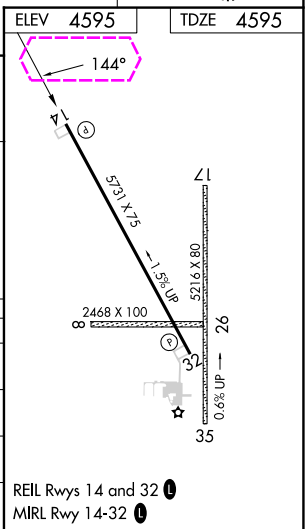
AWOS-3PT
132.95

DENVER CENTER
118.475 225.4

UNICOM
123.05 (CTAF) 0



CATEGORY	A	B	C	D
LPV DA	4845-1	250 (300-1)		
LNAV/VNAV DA	4845-1	250 (300-1)		
LNAV MDA	5000-1 405 (500-1)	5000-1½ 405 (500-1½)		
CIRCLING	5040-1 445 (500-1)	5080-1 485 (500-1)	5120-1½ 525 (600-1½)	5340-2½ 745 (800-2½)



FORT MORGAN, COLORADO
Amdt 1A 03JAN19

40°20'N-103°48'W

FORT MORGAN MUNI (FMM)
RNAV (GPS) RWY 14

WAAS CH 86330 W14A	APP CRS 144°	Rwy Ldg 5731
		TDZE 4595
		Apt Elev 4595

RNAV (GPS) RWY 14

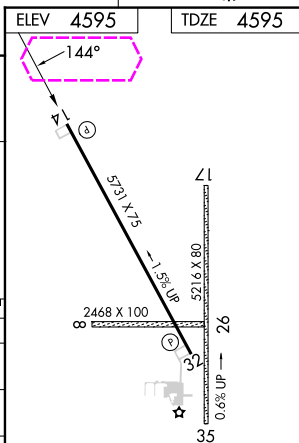
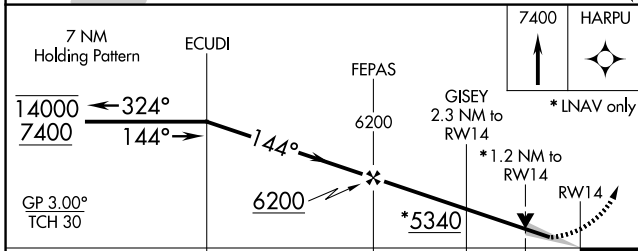
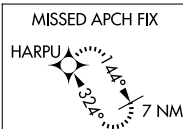
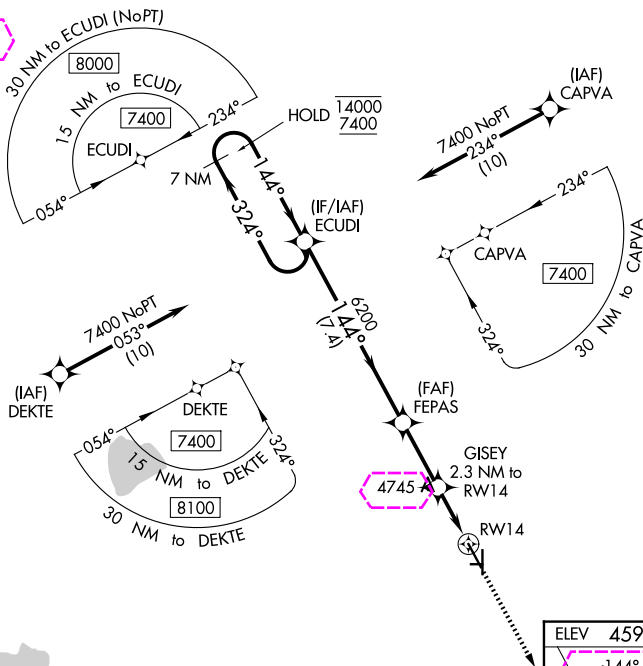
RNP APCH.

T	Circling Rwy 8, 17, 26, 32, 35 NA at night.
A	

MISSED APPROACH: Climb to 7400 direct HARPU and hold.

AWOS-3P
132.95

DENVER CENTER
118.475 225.4

UNICOM
123.05 (CTAF) **L**

CATEGORY	A	B	C	D
LPV DA	4845-1 250 (300-1)			
LNAV/ VNAV	4845-1 250 (300-1)			
LNAV MDA	5000-1 405 (500-1)		5000-1 $\frac{1}{8}$ 405 (500-1 $\frac{1}{8}$)	
CIRCLING	5040-1 445 (500-1)	5080-1 485 (500-1)	5120-1 $\frac{1}{2}$ 525 (600-1 $\frac{1}{2}$)	5340-2 $\frac{1}{2}$ 745 (800-2 $\frac{1}{2}$)

REIL Rwy 14 and 32 **L**
MIRL Rwy 14-32 **L**

FORT MORGAN, COLORADO
Amdt 1A 03JAN19

40°20'N-103°48'W

FORT MORGAN MUNI (FMM)
RNAV (GPS) RWY 14