

INVERNESS, FLORIDA

AL-10673 (FAA)

20310

APP CRS	Rwy Idg	5000
011°	TDZE	65
	Apt Elev	65

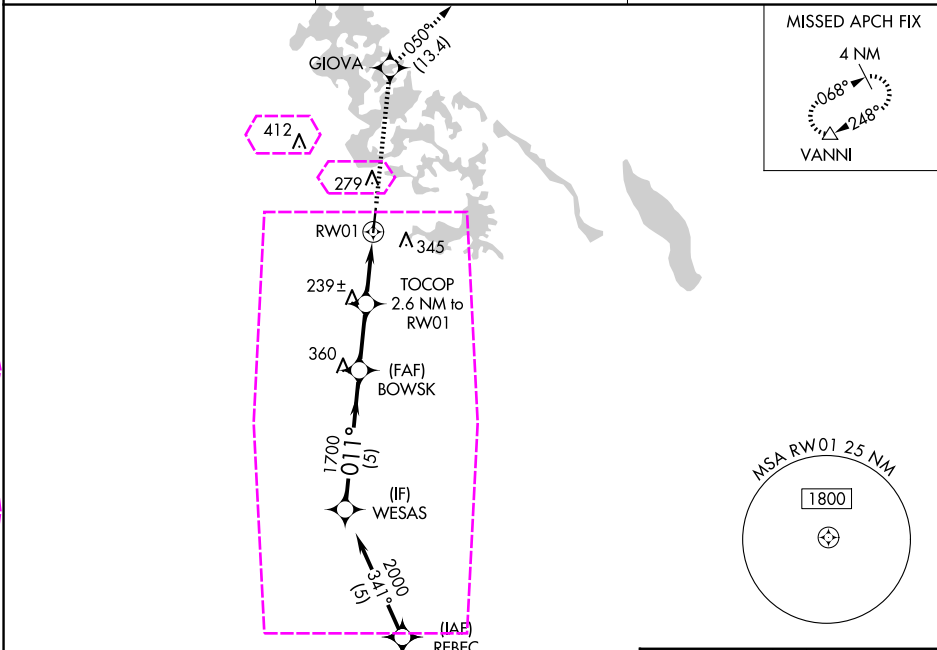
RNAV (GPS) RWY 1

INVERNESS (INF)

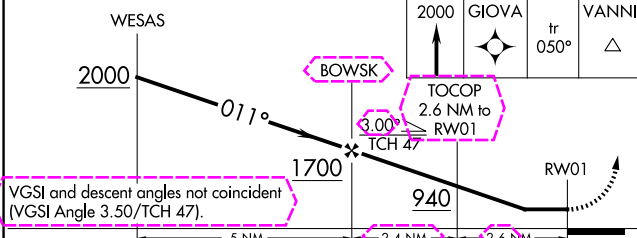
⚠ When local altimeter setting not received, use Ocala altimeter setting and increase all MDA 60 feet; and increase LNAV Cat C visibility 1/4 mile and Circling Cat C visibility 1/4 mile. **DME/DME RNP-0.3 NA. Visibility reduction by helicopters NA. Procedure NA at night.**

MISSED APPROACH: Climb to 2000 direct GIOVA and on track 050° to VANNI and hold.

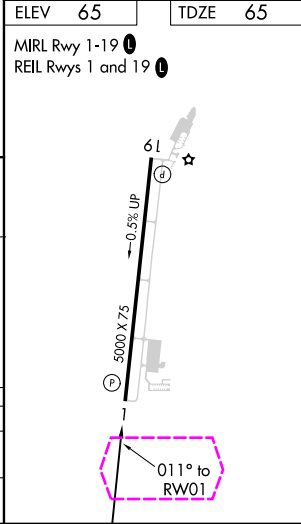
AWOS-3 119.975	JACKSONVILLE APP CON 118.6 251.15	UNICOM 122.725 (CTAF) 0
--------------------------	---	-----------------------------------



Procedure NA for arrivals at DADES on V7-521 southeast bound and V581 southbound.



CATEGORY	A	B	C	D
LNAV MDA	500-1	435 (500-1)	500-1 1/4 435 (500-1 1/4)	NA
CIRCLING	660-1	595 (600-1)	660-1 1/2 595 (600-1 1/2)	NA



INVERNESS, FLORIDA
Orig-A 21AUG14

28°48'N-82°19'W

RNAV (GPS) RWY 1

INVERNESS (INF')

SE-3, 10 JUL 2025 to 07 AUG 2025

SE-3, 10 JUL 2025 to 07 AUG 2025

INVERNESS, FLORIDA

AL-10673 (FAA)

25219

APP CRS	Rwy Ldg	5000
011°	TDZE	65
	Apt Elev	65

RNAV (GPS) RWY 1

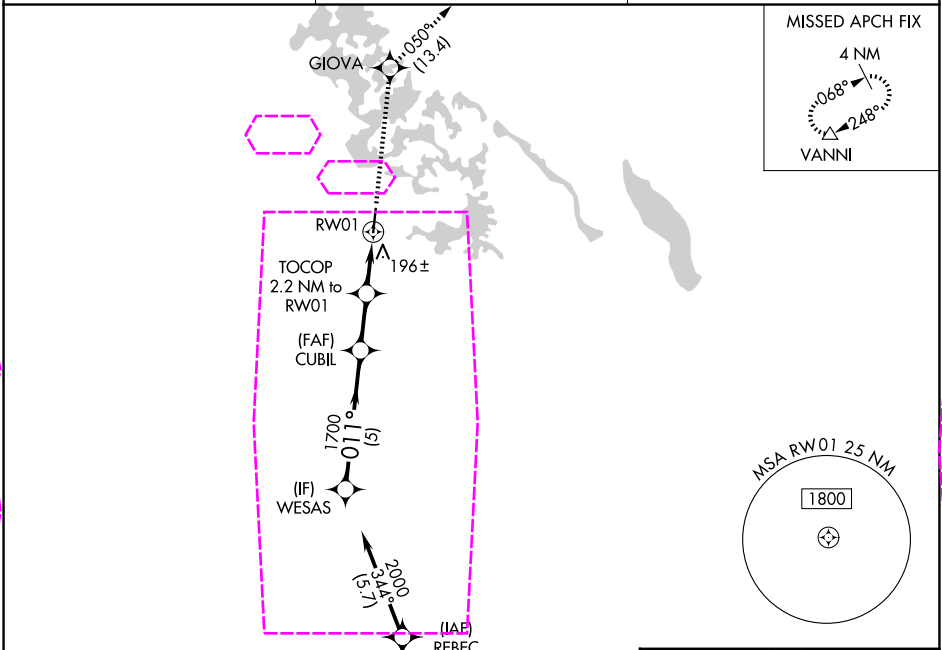
INVERNESS (INF)

RNP APCH - GPS.

⚠ Rwy 1 helicopter visibility reduction below 1 SM NA. Procedure NA at night. When local altimeter setting not received, use OCF altimeter setting and increase all MDAs 60 feet and LNAV visibility Cat C 1/2 SM, and Circling visibility Cat C 1/2 SM.

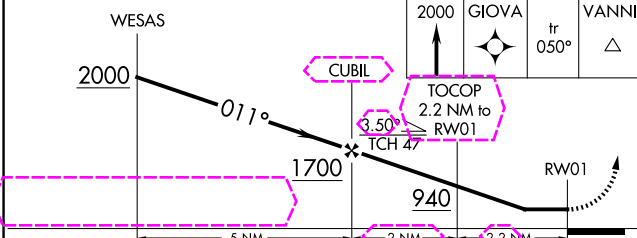
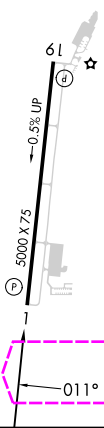
MISSED APPROACH: Climb to 2000 direct GIOVA and on track 050° to VANNI and hold.

AWOS-3 119.975	JACKSONVILLE APP CON 118.6 251.15	UNICOM 122.725 (CTAF) 0
-------------------	--------------------------------------	----------------------------



Procedure NA for arrivals at DADES on V581 southbound.

ELEV 65	TDZE 65
MIRL Rwy 1-19 0	REIL Rwy 1 and 19 0



CATEGORY	A	B	C	D
LNAV MDA	500-1	435 (500-1)	500-1 1/4 435 (500-1 1/4)	NA
CIRCLING	660-1	595 (600-1)	660-1 1/2 595 (600-1 1/2)	NA

INVERNESS, FLORIDA

Amdt 1 07AUG25

28°48'N-82°19'W

INVERNESS (INF)

RNAV (GPS) RWY 1

SE-3, 07 AUG 2025 to 04 SEP 2025

SE-3, 07 AUG 2025 to 04 SEP 2025