

INVERNESS, FLORIDA

AL-10673 (FAA)

20310

APP CRS	Rwy Idg	5000
191°	TDZE	54
	Apt Elev	65

RNAV (GPS) RWY 19

INVERNESS (INF)

RNP APCH.



Rwy 19 helicopter visibility reduction below 1 SM NA.

MISSED APPROACH: Climb to 2000 direct BOWSK and on track 176° to REBEC and hold.

AWOS-3
119.975

JACKSONVILLE APP CON
118.6 251.15

UNICOM
122.725 (CTAF) 0

Procedure NA for arrivals on OCF VORTAC
airway radials 129 CW 208.

(IAF) OCALA
OCF

(IAF) VANNI

2000
203°
(12.5)

2000
248°
(10)

(IF) FRINC

1700
191°
(5)

(FAF) GIOVA

279

RW19

345

BOWSK

176°
(2.6)

REBEC

341°
(4.0)

4 NM

MISSED APCH FIX

REBEC

191°
(4.0)

341°
(4.0)

4 NM

Visual Segment - Obstacles.

FRINC

2000

191°

1700

5.1 NM

5 NM

CATEGORY

A

B

C

D

LNAV MDA

580-1

526 (600-1)

580-1½

526 (600-1½)

660-1

595 (600-1)

660-1½

595 (600-1½)

NA

NA

ELEV 65

TDZE 54

191° to RW19

0.5% UP

5000 X 75

1

MIRL Rwy 1-19

REIL Rwy 1 and 19

INVERNESS, FLORIDA

Orig-B 16AUG18

28°48'N-82°19'W

RNAV (GPS) RWY 19

INVERNESS (INF)

RNAV (GPS) RWY 19

INVERNESS (INF)

RNAV (GPS) RWY 19

INVERNESS (INF)

RNAV (GPS) RWY 19

INVERNESS (INF)

RNAV (GPS) RWY 19

INVERNESS (INF)

RNAV (GPS) RWY 19

INVERNESS (INF)

RNAV (GPS) RWY 19

INVERNESS (INF)

RNAV (GPS) RWY 19

INVERNESS, FLORIDA

AL-10673 (FAA)

25219

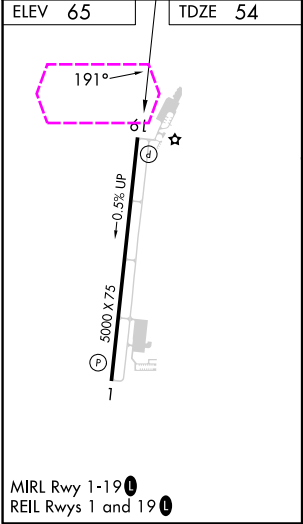
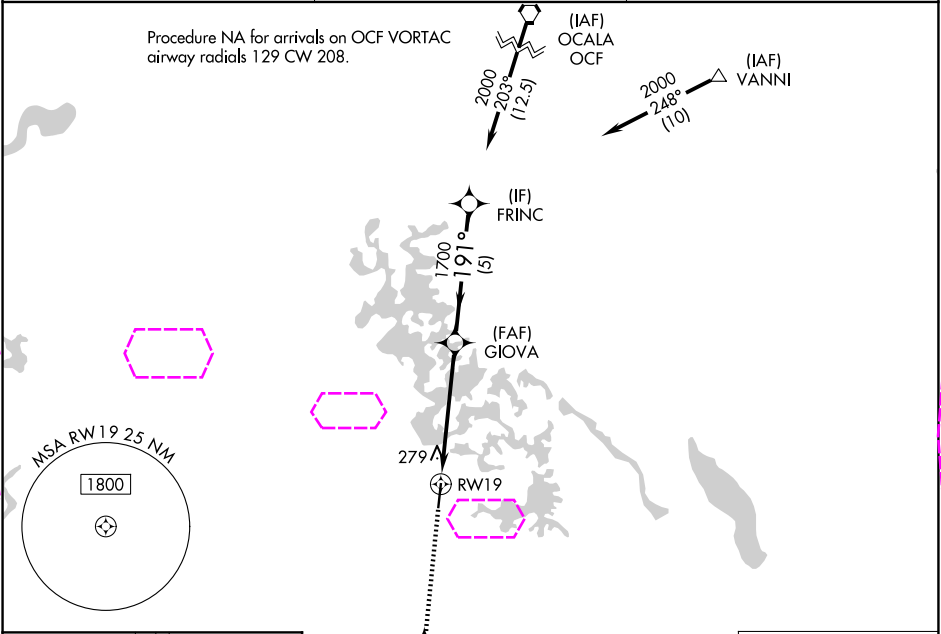
APP CRS	Rwy Ldg	5000
191°	TDZE	54
	Apt Elev	65

RNAV (GPS) RWY 19

INVERNESS (INF)

RNP APCH.	MISSED APPROACH: Climb to 2000 direct BOWSK and on track 176° to REBEC and hold.
Rwy 19 helicopter visibility reduction below 1 SM NA.	

AWOS-3 119.975	JACKSONVILLE APP CON 118.6 251.15	UNICOM 122.725 (CTAF) 0
-------------------	--------------------------------------	----------------------------



2000	BOWSK	tr 176°	REBEC	Visual Segment - Obstacles.	FRINC
					2000
CATEGORY		A	B	C	D
LNAV MDA		580-1	526 (600-1)	580-1½ 526 (600-1½)	NA
CIRCLING		660-1	595 (600-1)	660-1½ 595 (600-1½)	NA

INVERNESS, FLORIDA
Orig-B 16AUG18

28°48'N-82°19'W

RNAV (GPS) RWY 19

INVERNESS (INF)