

TAZEWELL, TENNESSEE

AL-10662 (FAA)

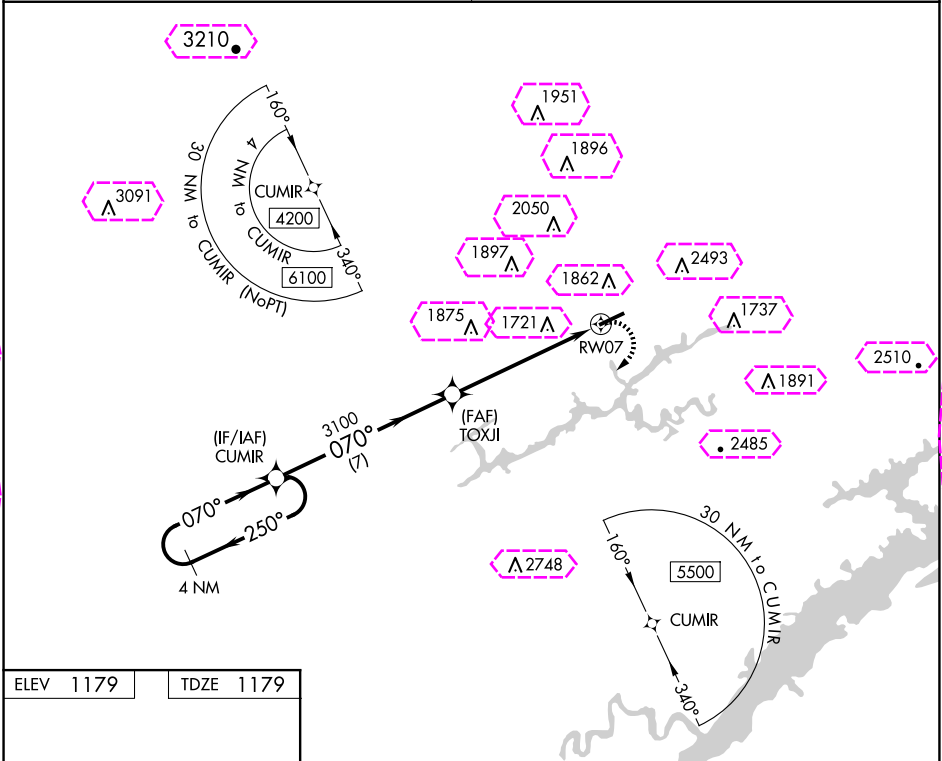
22195

WAAS CH 69335 W07A	APP CRS 070°	Rwy Idg 5208 TDZE 1179 Apt Elev 1179
--	------------------------	---

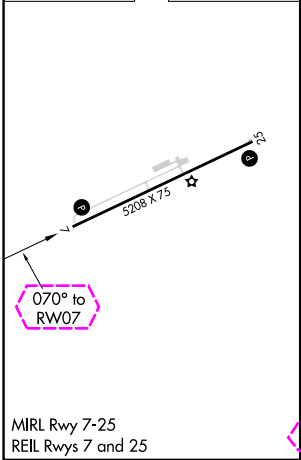
RNAV (GPS) RWY 7
NEW TAZEWELL MUNI (3A2)

NA DME/DME RNP-0.3 NA. Rwy 7, 25 Helicopter visibility reduction below 1 SM NA. Procedure NA at night. Obtain local altimeter setting on CTAF; when not received, use Middlesboro altimeter setting and increase all MDAs 60 feet.	MISSED APPROACH: Climbing right turn to 4200 direct CUMIR and hold.
--	---

ATLANTA CENTER 133.6 254.3	CTAF 122.9 0
--------------------------------------	------------------------



ELEV 1179	TDZE 1179
-----------	-----------



4 NM Holding Pattern		CUMIR	VGSI and descent angles not coincident (VGSI Angle 3.50/TCH 35).		4200	CUMIR
4200		←250° 070°→	070°	TOXJI	3100	RW07
		7 NM		3.00° TCH 45	5.9 NM	
CATEGORY	A	B	C	D		
LP MDA	2240-1¼ 1061 (1100-1¼)	2240-1½ 1061 (1100-1½)	NA			
LNNAV MDA	2260-1¼ 1081 (1100-1¼)	2260-1½ 1081 (1100-1½)	NA			
CIRCLING	2260-1¼ 1081 (1100-1¼)	2260-1½ 1081 (1100-1½)	NA			

TAZEWELL, TENNESSEE
Orig-A 22JUN17

36°25'N-83°33'W

NEW TAZEWELL MUNI (3A2)
RNAV (GPS) RWY 7

SE-1, 10 JUL 2025 to 07 AUG 2025

SE-1, 10 JUL 2025 to 07 AUG 2025

