



DANVILLE, PENNSYLVANIA

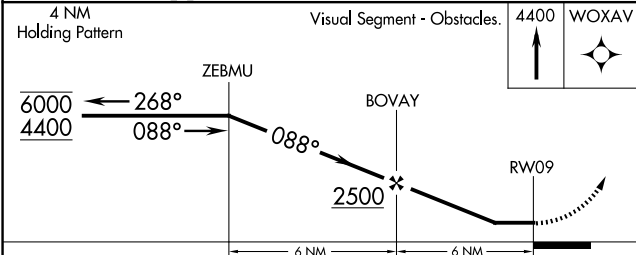
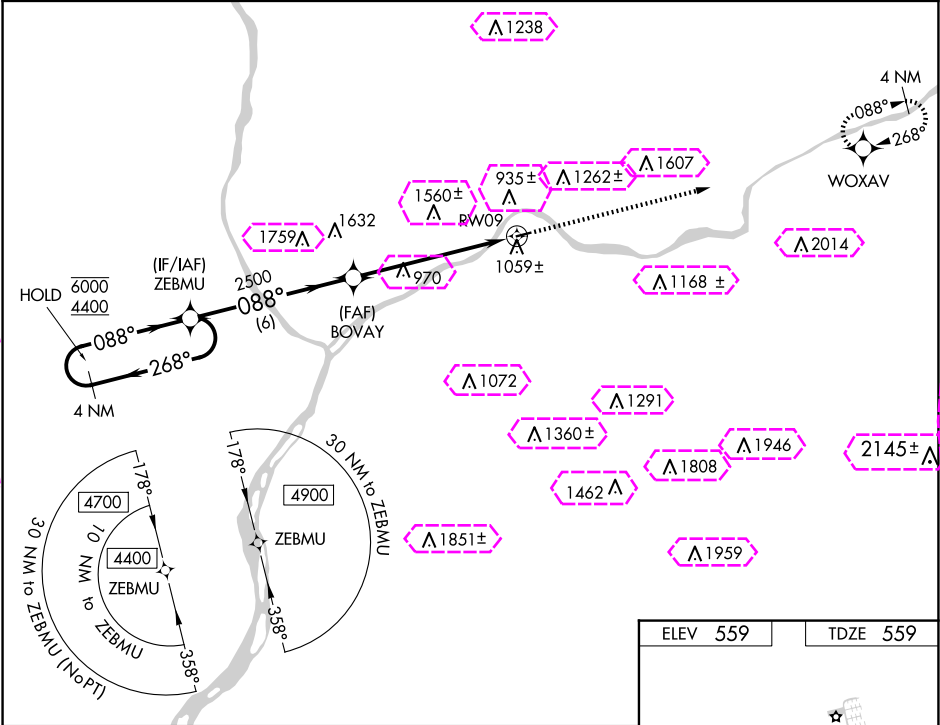
AL-10661 (FAA)


24109

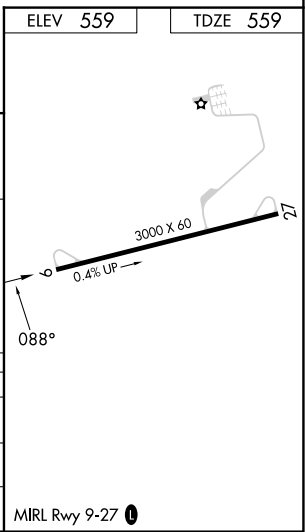
WAAS CH 65827 W09A	APP CRS 088°	Rwy Idg TDZE Apt Elev	3000 559 559
--	------------------------	-----------------------------	---

RNAV (GPS) RWY 9
DANVILLE (8N8)

RNP APCH - GPS.		MISSED APPROACH: Climb to 4400 direct WOXAV and hold, continue climb-in-hold to 4400.
 Rwy 9 helicopter visibility reduction below 1 SM NA.  Procedure NA at night. Use Williamsport altimeter setting; when not received, procedure NA.		
IPT ASOS 125.225	WILKES-BARRE APP CON 126.3 256.7	UNICOM 122.8 (CTAF)



CATEGORY	A	B	C	D
LP MDA	1280-1¼ 721 (800-1¼)	1280-1½ 721 (800-1½)		NA
LNAY MDA	1360-1¼ 801 (900-1¼)	1360-1½ 801 (900-1½)		NA
 CIRCLING	1480-1¼ 921 (1000-1¼)	1760-1½ 1201 (1300-1½)		NA



DANVILLE, PENNSYLVANIA
Orig-D 18APR24

40°57'N-76°39'W

RNAV (GPS) RWY 9
DANVILLE (8N8)

DANVILLE, PENNSYLVANIA

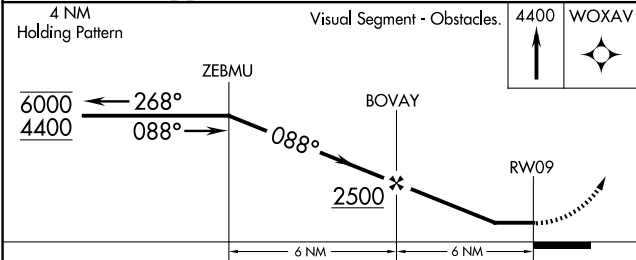
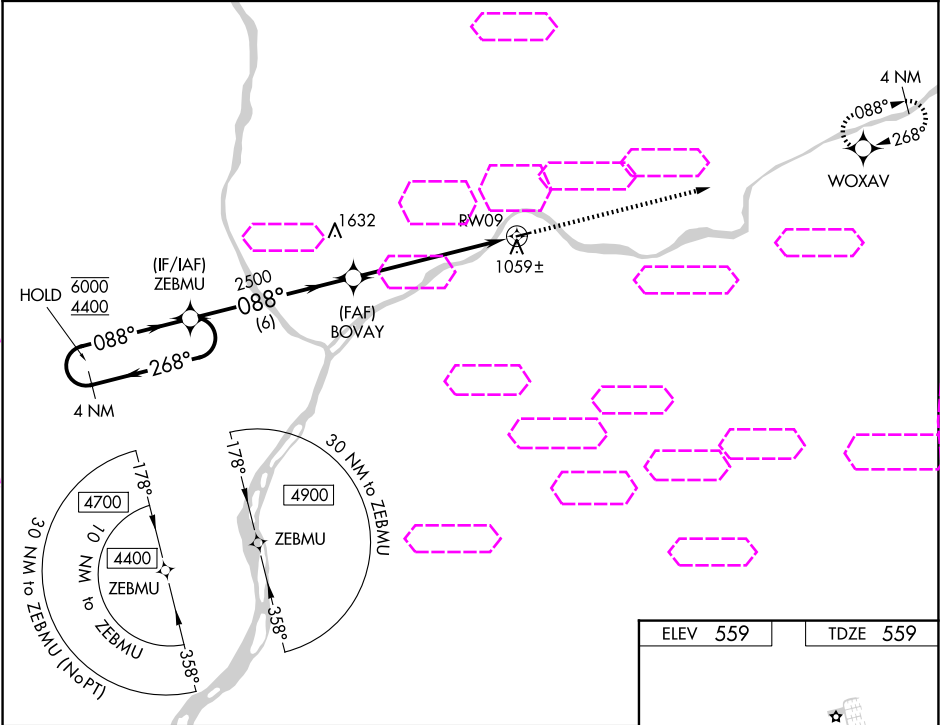
AL-10661 (FAA)

25219

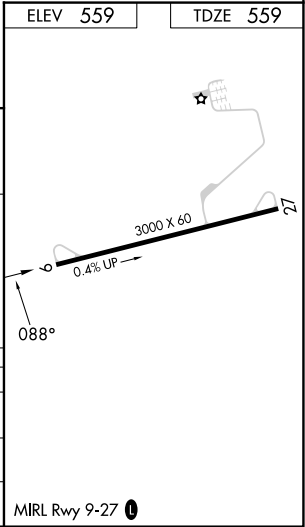
WAAS CH 65827 W09A	APP CRS 088°	Rwy Ldg TDZE Apt Elev	3000 559 559
--	------------------------	-----------------------------	---

RNAV (GPS) RWY 9
DANVILLE (8N8)

RNP APCH - GPS.		MISSED APPROACH: Climb to 4400 direct WOXAV and hold, continue climb-in-hold to 4400.
▼ NA	Rwy 9 helicopter visibility reduction below 1 SM NA. Procedure NA at night. Use Williamsport altimeter setting; when not received, procedure NA.	
IPT ASOS 125.225	WILKES-BARRE APP CON 126.3 256.7	UNICOM 122.8 (CTAF) 0



CATEGORY	A	B	C	D
LP MDA	1280-1¼ 721 (800-1¼)	1280-1½ 721 (800-1½)	NA	
LNAY MDA	1360-1¼ 801 (900-1¼)	1360-1½ 801 (900-1½)	NA	
CIRCLING	1480-1¼ 921 (1000-1¼)	1760-1½ 1201 (1300-1½)	NA	



DANVILLE, PENNSYLVANIA
Orig-D 18APR24

40°57'N-76°39'W

DANVILLE (8N8)
RNAV (GPS) RWY 9