

DANVILLE, PENNSYLVANIA

AL-10661 (FAA)

24109

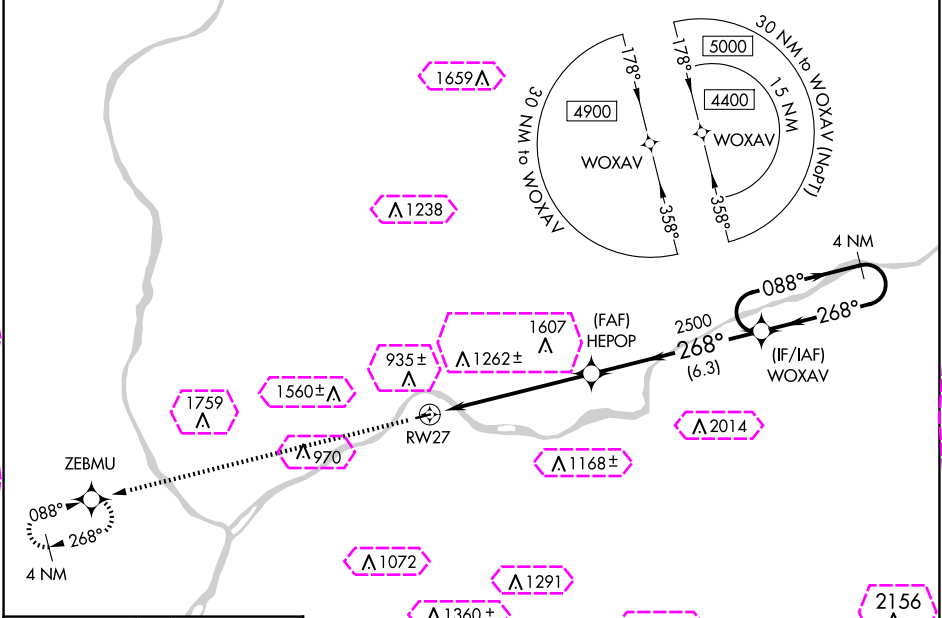
APP CRS	Rwy Idg	3000
268°	TDZE	559
	Apt Elev	559

RNAV (GPS) RWY 27

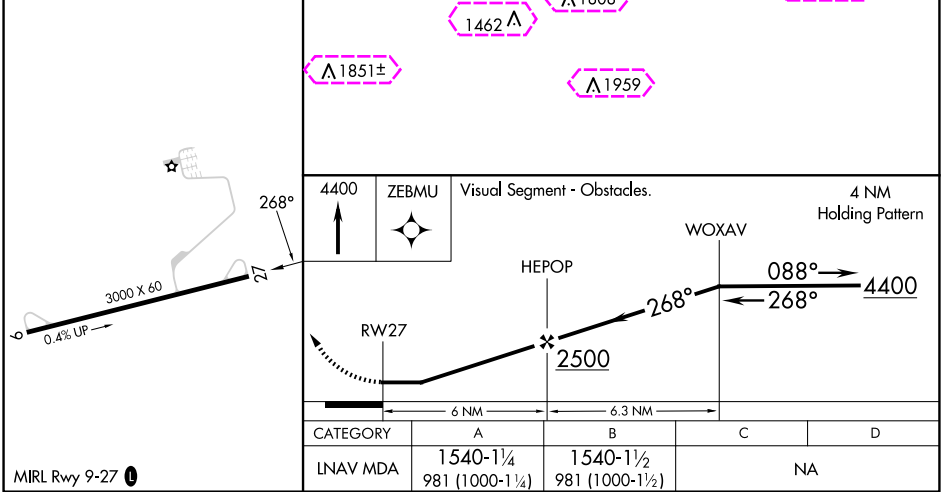
DANVILLE (8N8)

RNP APCH - GPS.	MISSED APPROACH: Climb to 4400 direct ZEBMU and hold, continue climb-in-hold 4400.
▼ ▲ NA	Use Williamsport altimeter setting; when not received, procedure NA. Procedure NA at night. Rwy 27 helicopter visibility reduction below 1 SM NA.

IPT ASOS 125.225	WILKES-BARRE APP CON 126.3 256.7	UNICOM 122.8 (CTAF) 0
---------------------	-------------------------------------	--------------------------



ELEV 559	TDZE 559
----------	----------



DANVILLE, PENNSYLVANIA
Orig-D 18APR24

40°57'N-76°39'W

RNAV (GPS) RWY 27

NE-4, 10 JUL 2025 to 07 AUG 2025

NE-4, 10 JUL 2025 to 07 AUG 2025

DANVILLE, PENNSYLVANIA

AL-10661 (FAA)

25219

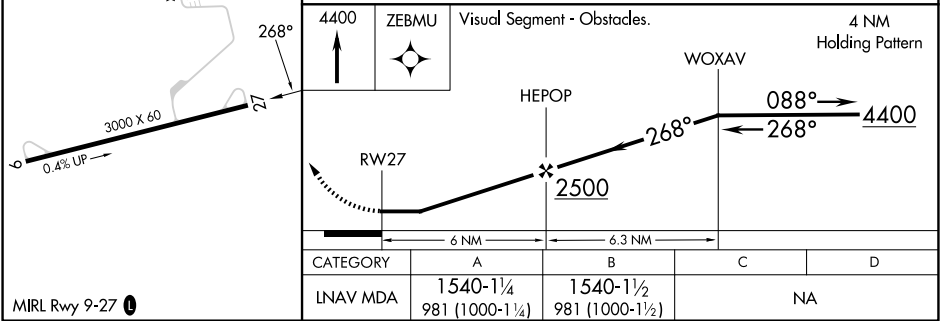
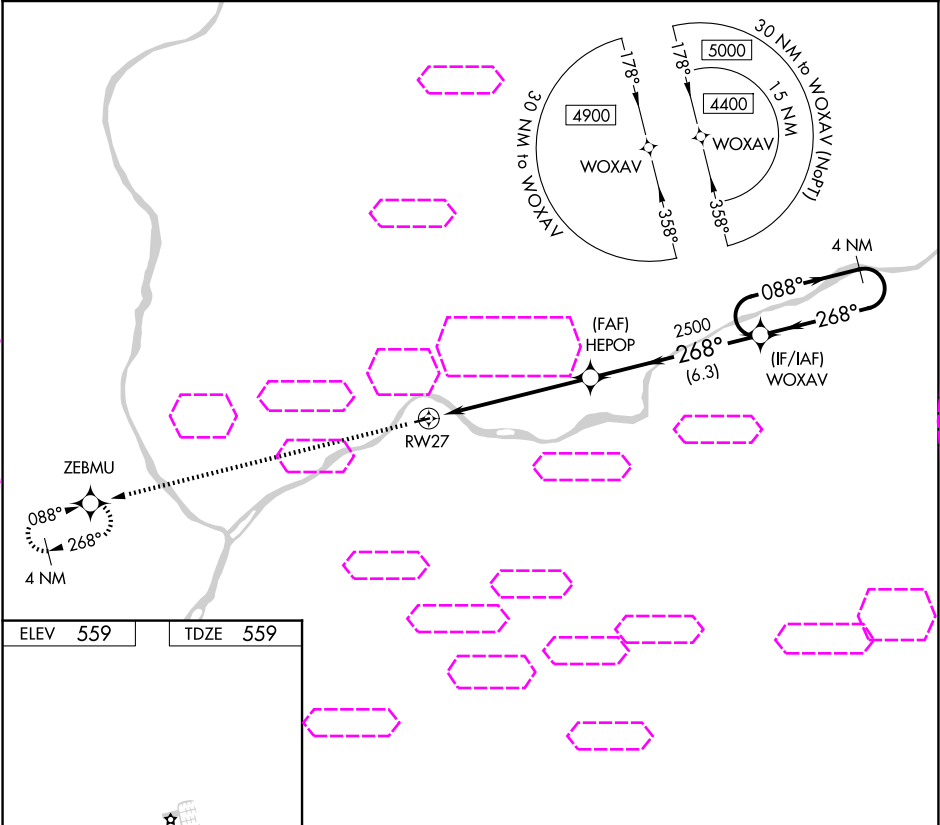
APP CRS	Rwy Ldg	3000
268°	TDZE	559
	Apt Elev	559

RNAV (GPS) RWY 27

DANVILLE (8N8)

RNP APCH - GPS.	MISSED APPROACH: Climb to 4400 direct ZEBMU and hold, continue climb-in-hold 4400.
▼ ▲ NA	Use Williamsport altimeter setting; when not received, procedure NA. Procedure NA at night. Rwy 27 helicopter visibility reduction below 1 SM NA.

IPT ASOS 125.225	WILKES-BARRE APP CON 126.3 256.7	UNICOM 122.8 (CTAF) 0
---------------------	-------------------------------------	--------------------------



DANVILLE, PENNSYLVANIA
Orig-D 18APR24

40°57'N-76°39'W

RNAV (GPS) RWY 27

NE-4, 07 AUG 2025 to 04 SEP 2025

NE-4, 07 AUG 2025 to 04 SEP 2025