

DAYTON, OHIO

AL-10653 (FAA)

22307

APP CRS <b>264°</b>	Rwy Idg TDZE Apt Elev <b>720</b>	<b>N/A</b> <b>N/A</b> <b>720</b>
------------------------	---	--

# RNAV (GPS)-A

MORaine AIR PARK (I73)

RNP APCH - GPS.

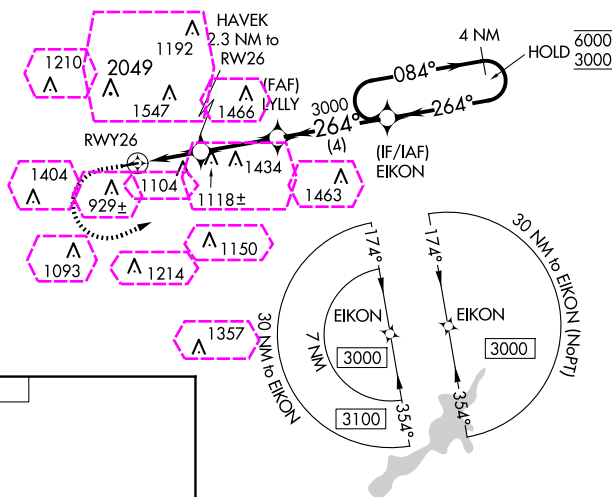
Procedure NA at night.  
Rwy 8 and 26 helicopter visibility reduction below 1 SM NA.  
Use Dayton-Wright Brothers altimeter setting.

MISSED APPROACH: Climb to 1500 then  
climbing left turn to 3000 direct EIKON  
and hold.

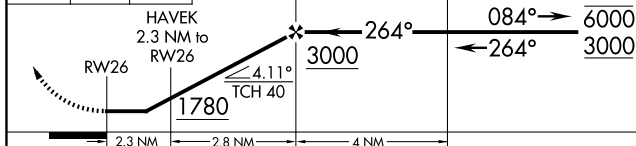
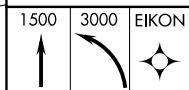
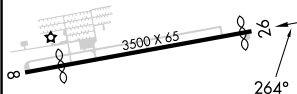
MGY ASOS  
**118.375**

COLUMBUS APP CON  
**118.85 269.275**

UNICOM  
**122.7 (CTAF)**



ELEV 720



CATEGORY	A	B	C	D
<b>CIRCLING</b>	1440-1 720 (800-1)	1520-1 800 (800-1)	NA	

MIRL Rwy 8-26

DAYTON, OHIO  
Orig 03NOV22

39°41'N-84°14'W

MORaine AIR PARK (I73)  
**RNAV (GPS)-A**

EC-2, 10 JUL 2025 to 07 AUG 2025

EC-2, 10 JUL 2025 to 07 AUG 2025

DAYTON, OHIO

AL-10653 (FAA)

25219

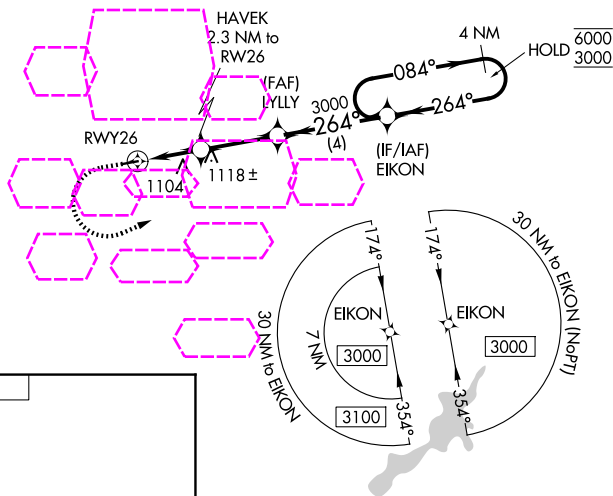
APP CRS <b>264°</b>	Rwy Ldg TDZE Apt Elev <b>720</b>	<b>N/A</b> <b>N/A</b> <b>720</b>
------------------------	---	--

# RNAV (GPS)-A

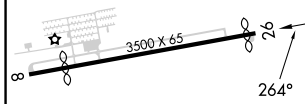
MORaine AIR PARK (I73)



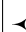
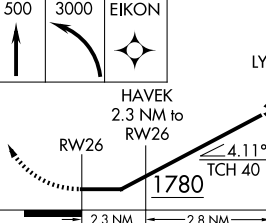
RNP APCH - GPS.	Procedure NA at night. Rwy 8 and 26 helicopter visibility reduction below 1 SM NA. Use Dayton-Wright Brothers altimeter setting.	MISSED APPROACH: Climb to 1500 then climbing left turn to 3000 direct EIKON and hold.
-----------------	--	---

MGY ASOS <b>118.375</b>	COLUMBUS APP CON <b>118.85 269.275</b>	UNICOM <b>122.7 (CTAF)</b>
----------------------------	---	-------------------------------



ELEV 720



1500	3000	EIKON	4 NM Holding Pattern			
						
			LYLLY	EIKON		
HAVEK 2.3 NM to RW26			264°	084°	6000	
			3000	264°	3000	
RW26			4.11°	TCH 40		
1780						
2.3 NM			2.8 NM	4 NM		
CATEGORY	A		B	C	D	
CIRCLING	1440-1 720 (800-1)		1520-1 800 (800-1)	NA		

MIRL Rwy 8-26

DAYTON, OHIO  
Orig 03NOV22

39°41'N-84°14'W

MORaine AIR PARK (I73)  
RNAV (GPS)-A

EC-2, 07 AUG 2025 to 04 SEP 2025

EC-2, 07 AUG 2025 to 04 SEP 2025