

APP CRS 213°	Rwy Idg TDZE Apt Elev	NA NA 963
------------------------	-----------------------------	--------------------------------------

RNAV (GPS)-B
NEW MARKET (8W2)

RNP APCH.

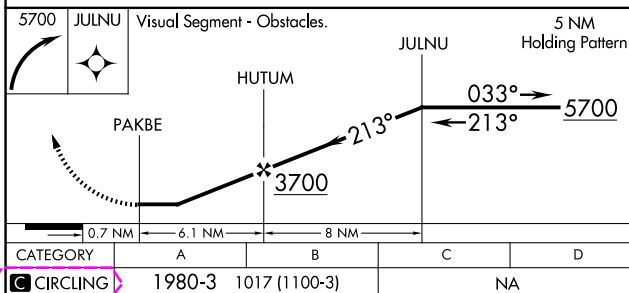
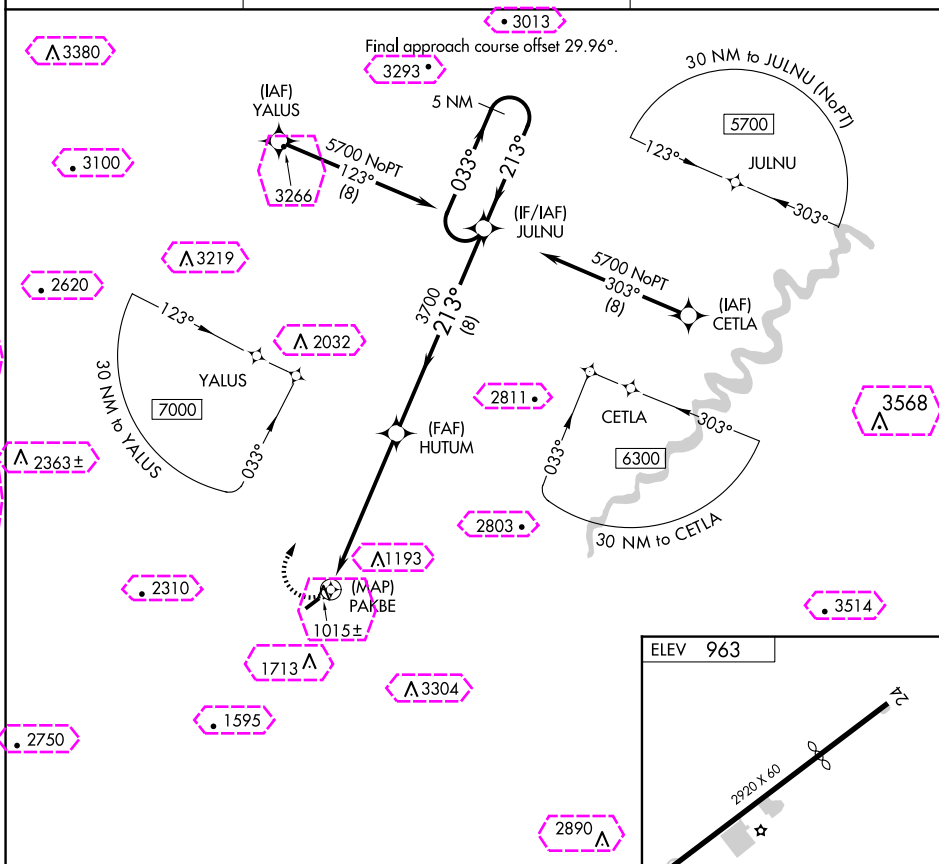
T	Procedure NA at night. When local altimeter setting not received, use Staunton/Waynesboro/Harrisonburg altimeter setting and increase all MDA 100 feet.
----------	---

MISSED APPROACH: Climbing right turn to 5700 direct JULNU and hold, continue climb-in-hold to 5700.

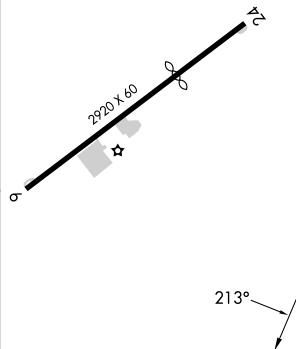
AWOS-3
118.175

WASHINGTON CENTER
133.2 282.2

UNICOM
122.8 (CTAF)



ELEV 963



NEW MARKET, VIRGINIA
Orig-A 28FEB19

38°39'N-78°43'W

NEW MARKET (8W2)
RNAV (GPS)-B

NE-3, 10 JUL 2025 to 07 AUG 2025

NE-3, 10 JUL 2025 to 07 AUG 2025

NEW MARKET, VIRGINIA

AL-10650 (FAA)

25219

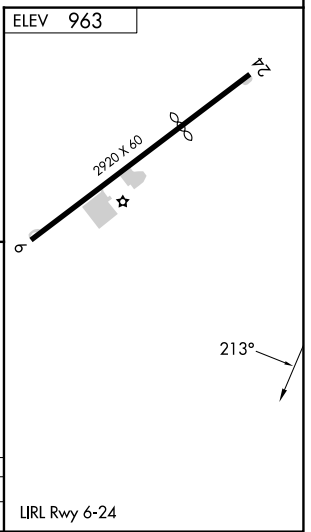
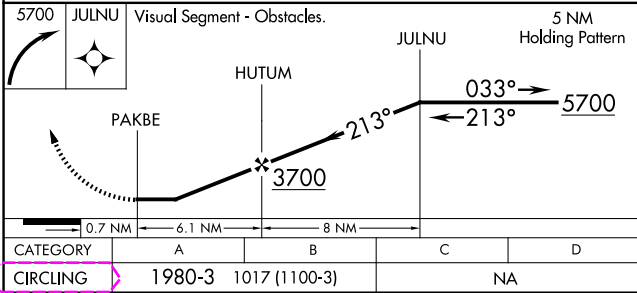
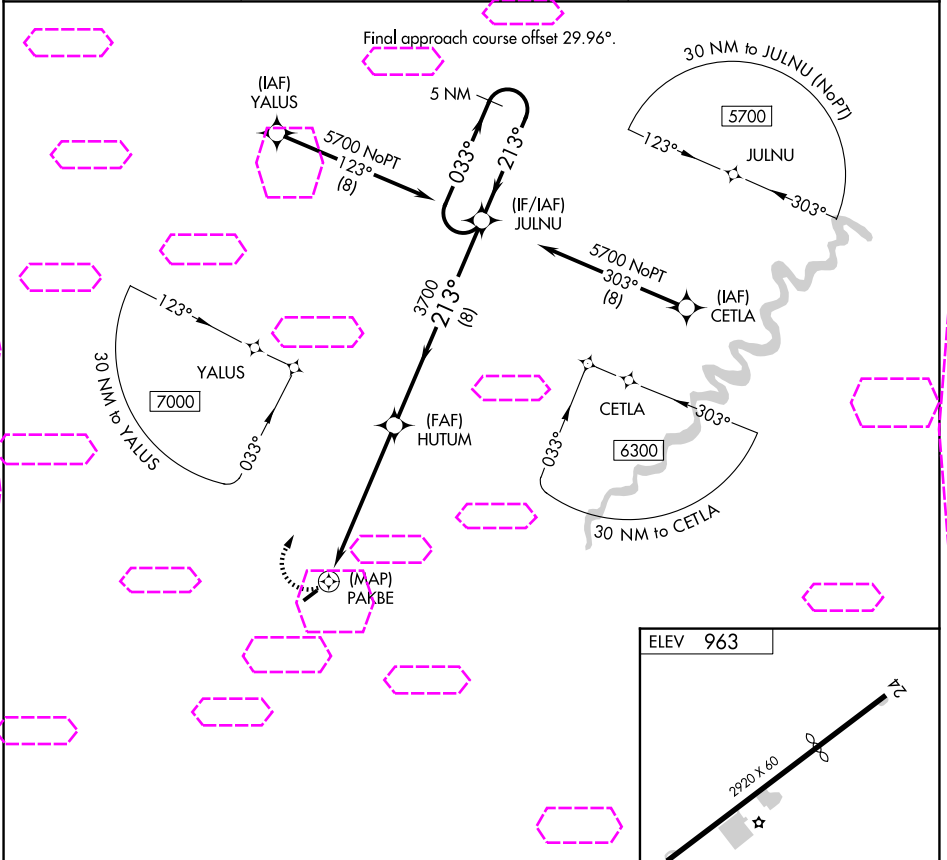
APP CRS 213°	Rwy Ldg TDZE Apt Elev	NA NA 963
------------------------	-----------------------------	------------------------

RNAV (GPS)-B

NEW MARKET (8W2)

RNP APCH.	Procedure NA at night. When local altimeter setting not received, use Staunton/Waynesboro/Harrisonburg altimeter setting and increase all MDA 100 feet.	MISSED APPROACH: Climbing right turn to 5700 direct JULNU and hold, continue climb-in-hold to 5700.
-----------	---	---

AWOS-3 118.175	WASHINGTON CENTER 133.2 282.2	UNICOM 122.8 (CTAF)
--------------------------	---	-------------------------------



CATEGORY	A	B	C	D
CIRCLING	1980-3	1017 (1100-3)	NA	NA

NEW MARKET, VIRGINIA
Orig-A 28FEB19

NEW MARKET (8W2)
RNAV (GPS)-B

38°39'N-78°43'W