

NEW MARKET, VIRGINIA

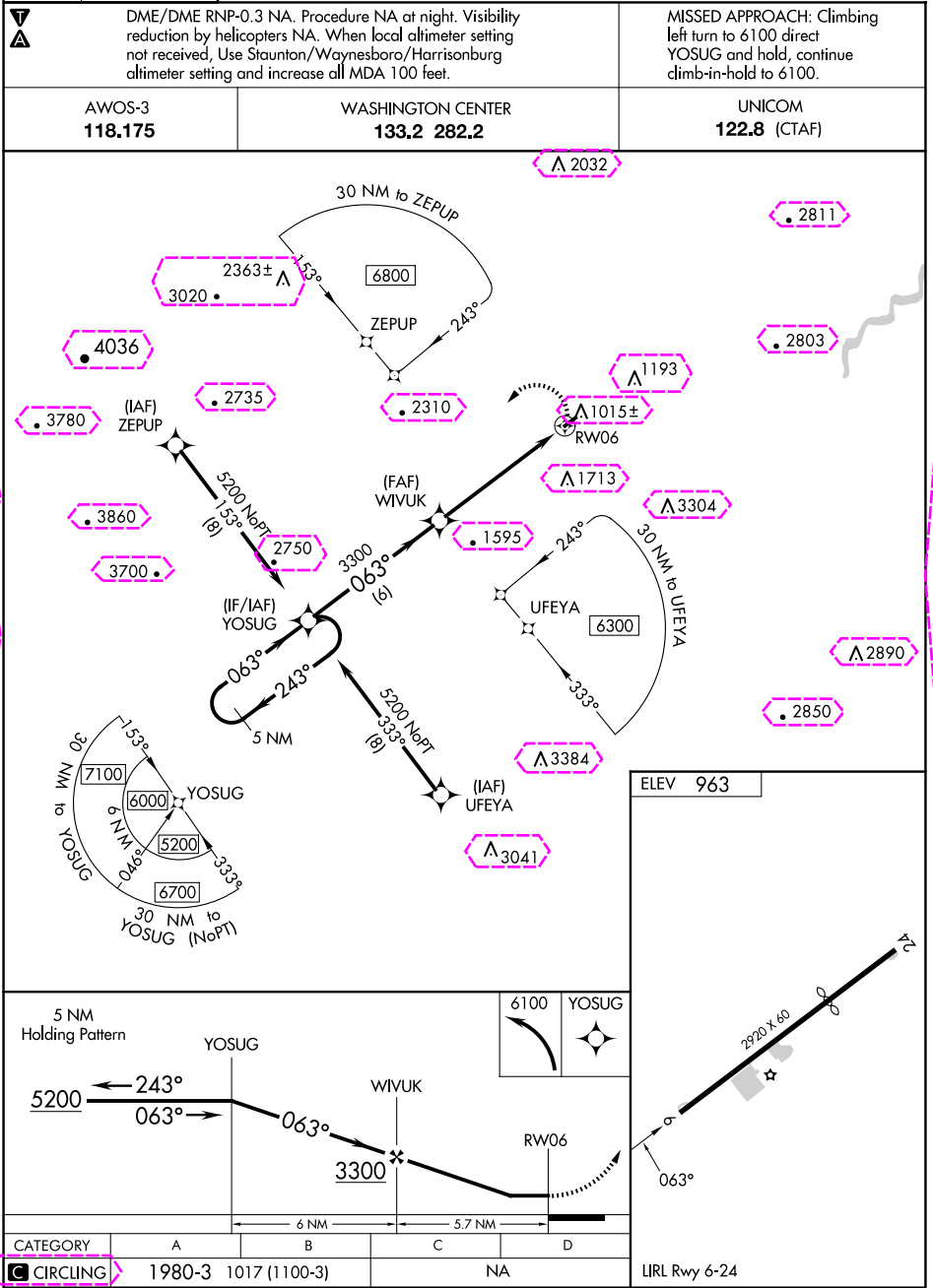
AL-10650 (FAA)

22363

APP CRS 063°	Rwy Idg TDZE Apt Elev	NA NA 963
------------------------	-----------------------------	------------------------

RNAV (GPS)-A

NEW MARKET (8W2)



NEW MARKET, VIRGINIA

Orig 18SEP14

38°39'N-78°43'W

NEW MARKET (8W2)

RNAV (GPS)-A

NEW MARKET, VIRGINIA

AL-10650 (FAA)

25219

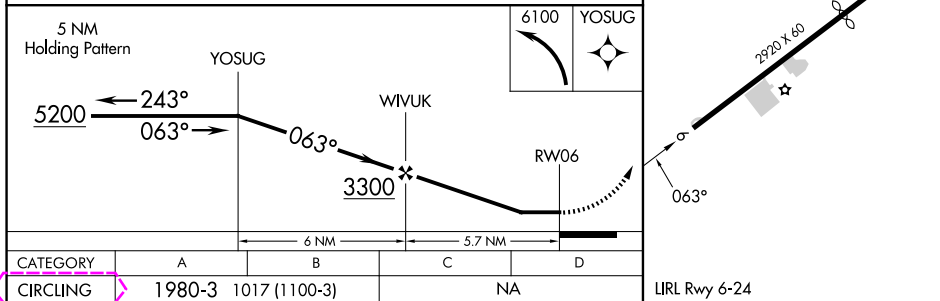
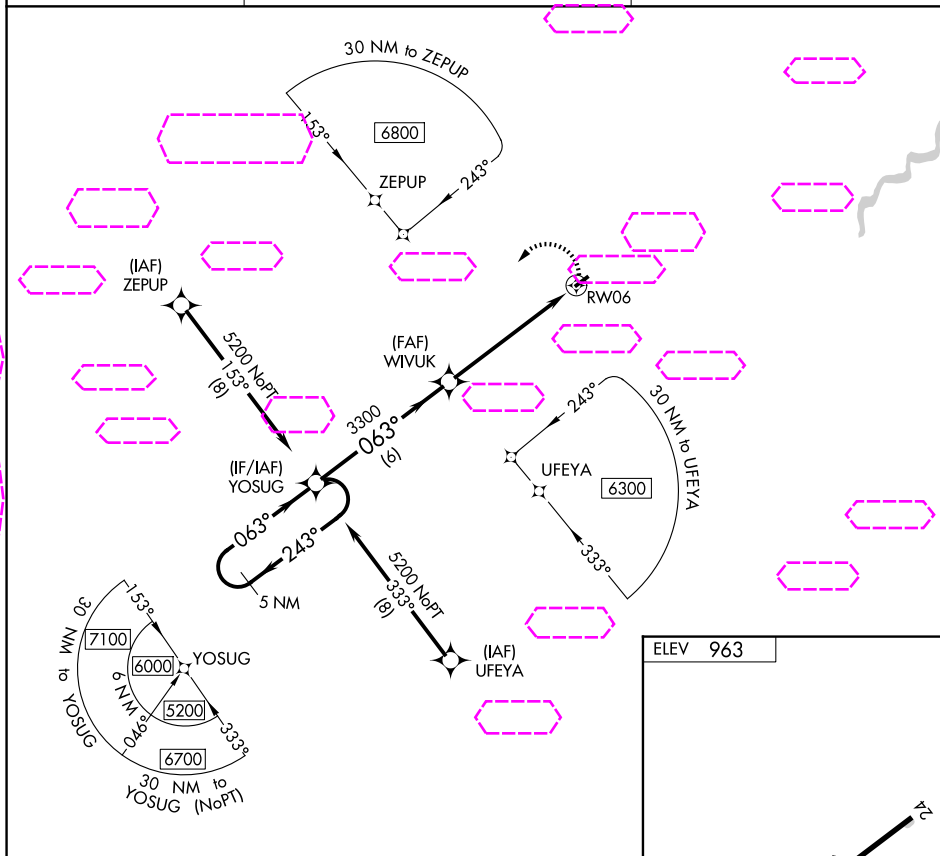
APP CRS 063°	Rwy Ldg TDZE Apt Elev	NA NA 963
------------------------	-----------------------------	------------------------

RNAV (GPS)-A

NEW MARKET (8W2)

	DME/DME RNP-0.3 NA. Procedure NA at night. Visibility reduction by helicopters NA. When local altimeter setting not received, Use Staunton/Waynesboro/Harrisonburg altimeter setting and increase all MDA 100 feet.	MISSED APPROACH: Climbing left turn to 6100 direct YOSUG and hold, continue climb-in-hold to 6100.
--	---	--

AWOS-3 118.175	WASHINGTON CENTER 133.2 282.2	UNICOM 122.8 (CTAF)
--------------------------	---	-------------------------------



CATEGORY	A	B	C	D
CIRCLING	1980-3	1017 (1100-3)	NA	

NEW MARKET, VIRGINIA

Orig 18SEP14

38°39'N-78°43'W

NEW MARKET (8W2)

RNAV (GPS)-A