

GORDONSVILLE, VIRGINIA

AL-10643 (FAA)

25051

APP CRS	Rwy Idg	N/A
228°	TDZE	N/A
	Apt Elev	454

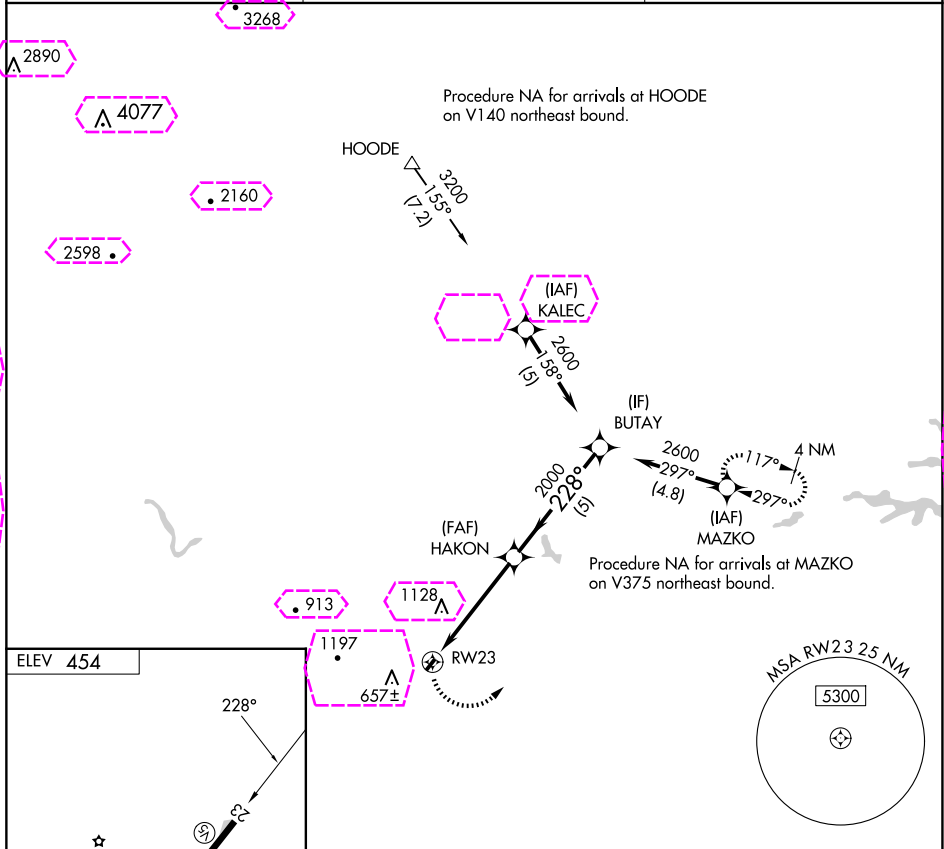
# RNAV (GPS)-B

GORDONSVILLE MUNI (GVE)

When local altimeter setting not received, use Orange County altimeter setting and increase all MDA 20 ft. DME/DME RNP-0.3 NA. Procedure NA at night. Helicopter visibility reduction below 1 SM NA.

MISSED APPROACH: Climbing left turn to 3000 direct MAZKO and hold.

AWOS-3 120.225	POTOMAC APP CON 132.85 323.125	UNICOM 123.0 (CTAF)
-------------------	-----------------------------------	------------------------



ELEV 454	228°	3000	MAZKO	Visual Segment - Obstacles.
MIRL Rwy 5-23	2300 x 50	RW23	HAKON	BUTAY
		2000	2600	
		4.8 NM	5 NM	
CATEGORY	A	B	C	D
CIRCLING	1520-3	1066 (1100-3)	NA	

GORDONSVILLE, VIRGINIA  
Orig-A 12OCT17

38°09'N-78°10'W

GORDONSVILLE MUNI (GVE)  
RNAV (GPS)-B

NE-3, 10 JUL 2025 to 07 AUG 2025

NE-3, 10 JUL 2025 to 07 AUG 2025

