

GORDONSVILLE, VIRGINIA

AL-10643 (FAA)

25051

APP CRS	Rwy Idg	N/A
048°	TDZE	N/A
	Apt Elev	454

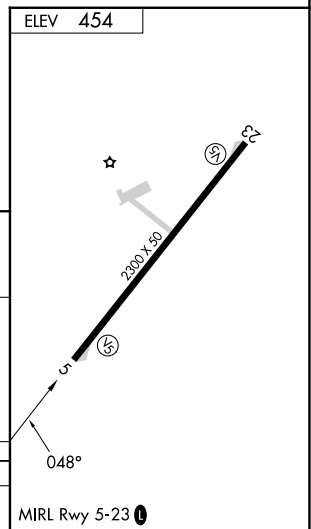
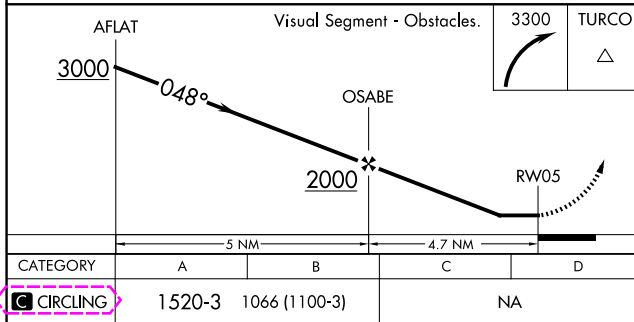
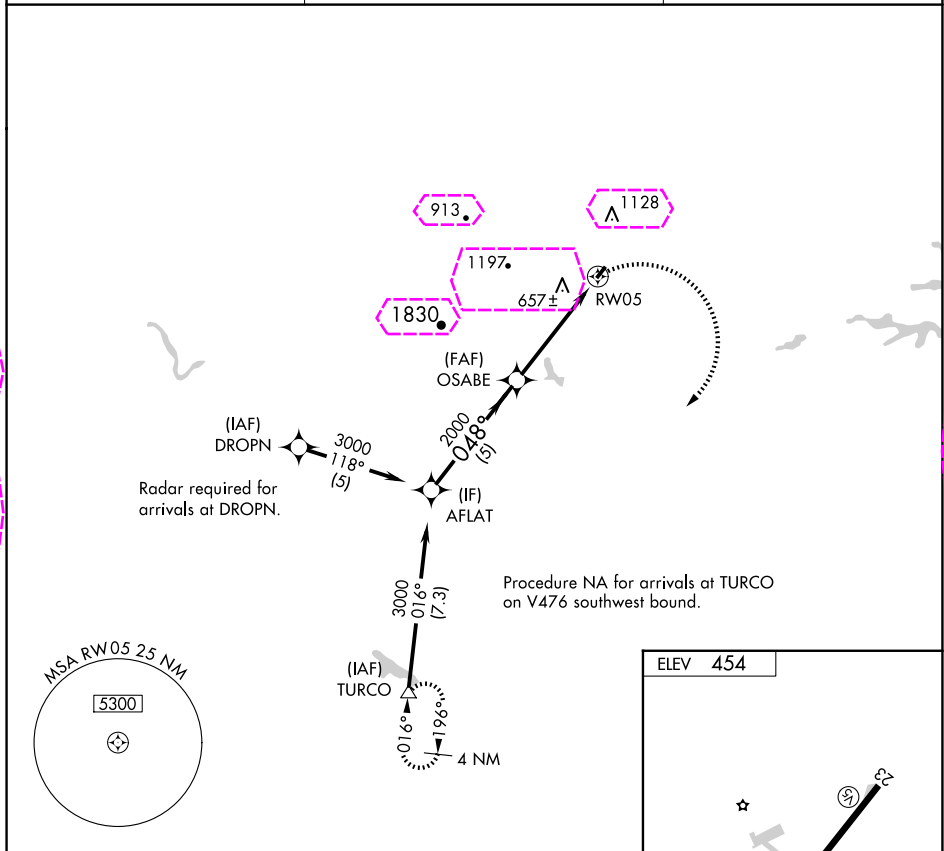
RNAV (GPS)-A

GORDONSVILLE MUNI (GVE)

When local altimeter setting not received, use Orange County altimeter setting and increase all MDA 20 ft. DME/DME RNP-0.3 NA. Procedure NA at night. Helicopter visibility reduction below 1 SM NA.

MISSED APPROACH: Climbing right turn to 3300 direct TURCO and hold.

AWOS-3 120.225	POTOMAC APP CON 132.85 323.125	UNICOM 123.0 (CTAF) 0
-------------------	-----------------------------------	--------------------------



GORDONSVILLE, VIRGINIA
Orig-A 12OCT17

38°09'N-78°10'W

GORDONSVILLE MUNI (GVE)
RNAV (GPS)-A

GORDONSVILLE, VIRGINIA

AL-10643 (FAA)

25219

APP CRS	Rwy Ldg	N/A
048°	TDZE	N/A
	Apt Elev	454

RNAV (GPS)-A

GORDONSVILLE MUNI (GVE)



When local altimeter setting not received, use Orange County altimeter setting and increase all MDA 20 ft. DME/DME RNP-0.3 NA. Procedure NA at night. Helicopter visibility reduction below 1 SM NA.

MISSED APPROACH: Climbing right turn to 3300 direct TURCO and hold.

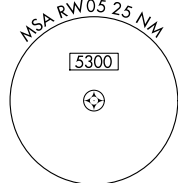
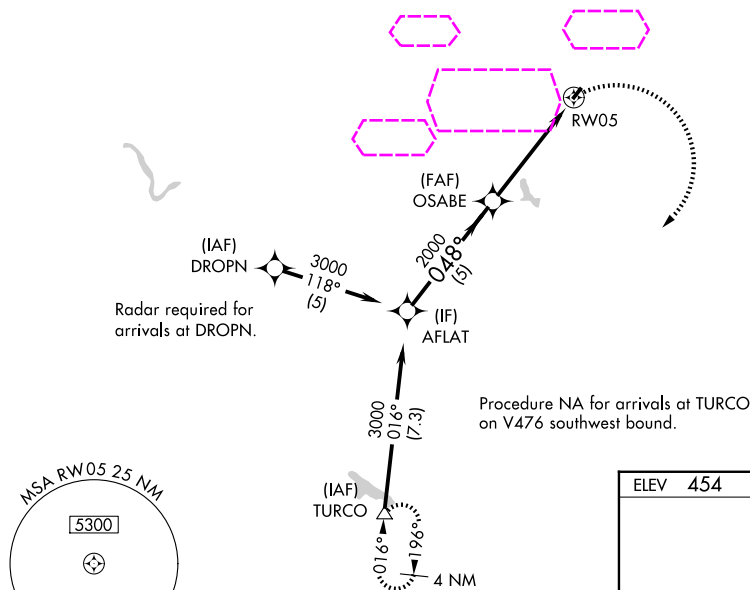
AWOS-3
120.225

POTOMAC APP CON
132.85 323.125

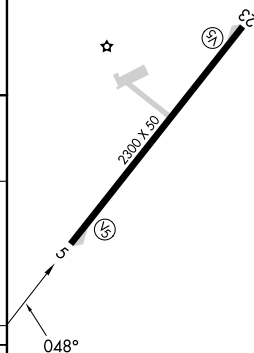
UNICOM
123.0 (CTAF) 0

NE-3, 07 AUG 2025 to 04 SEP 2025

NE-3, 07 AUG 2025 to 04 SEP 2025



ELEV 454



AFLAT

Visual Segment - Obstacles.

3300

TURCO

3000
048°

OSABE

2000

RW05

5 NM

4.7 NM

CATEGORY

A

1066 (1100-3)

NA

CIRCLING

1520-3

1066 (1100-3)

NA

MIRL Rwy 5-23 0

GORDONSVILLE, VIRGINIA

Orig-A 12OCT17

38°09'N-78°10'W

GORDONSVILLE MUNI (GVE)

RNAV (GPS)-A