

LAKOTA, NORTH DAKOTA

AL-10639 (FAA)

24081

WAAS CH <b>53540</b> <b>W33A</b>	APP CRS <b>341°</b>	Rwy Idg <b>3500</b> TDZE <b>1511</b> Apt Elev <b>1511</b>
--	------------------------	---

## RNAV (GPS) RWY 33

LAKOTA MUNI (5L#)

RNP APCH - GPS.

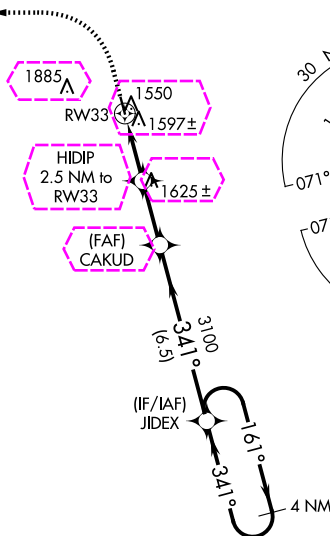
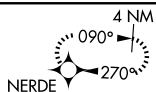
▼ Baro-VNAV NA. Rwy 33 helicopter visibility reduction below  $\frac{3}{4}$  SM NA.  
 ▲ NA Circling Rwy 15 NA at night. Use Devils Lake altimeter setting.

MISSED APPROACH: Climb to 2300  
 then climbing left turn to 3300 direct  
 NERDE and hold.

DVL AWOS-3PT  
**125.875**

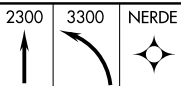
MINNEAPOLIS CENTER  
**132.15 269.6**

UNICOM  
**122.8 (CTAF) 0**



ELEV **1511** TDZE **1511**

R-5403



VGSI and RNAV glidepath not coincident  
 (VGSI Angle 3.00/TCH 26).

NERDE

CAKUD

JIDEX

4 NM Holding Pattern

HIDIP 2.5 NM to RW33

3100

341°

161°

3500

RW33

2340

3100

GP 3.00°

TCH 40

CATEGORY	A	B	C	D
LPV DA	1827-1 $\frac{1}{8}$	316 (400-1 $\frac{1}{8}$ )		NA
LNAV/VNAV DA	1827-1 $\frac{1}{8}$	316 (400-1 $\frac{1}{8}$ )		NA
LNAV MDA	1920-1	409 (500-1)	1920-1 $\frac{1}{8}$ 409 (500-1 $\frac{1}{8}$ )	NA
<b>CIRCLING</b>	2080-1 569 (600-1)	2200-1 689 (700-1)	2320-2 $\frac{1}{4}$ 809 (900-2 $\frac{1}{4}$ )	NA

MRL Rwy 15-33 0

LAKOTA, NORTH DAKOTA

Orig-B 22FEB24

LAKOTA MUNI (5L#)

48°02'N-98°20'W

## RNAV (GPS) RWY 33

NC-1, 10 JUL 2025 to 07 AUG 2025

NC-1, 10 JUL 2025 to 07 AUG 2025

