

EDGELEY, NORTH DAKOTA

AL-10637 (FAA)

20366

WAAS CH <b>45936</b> <b>W32A</b>	APP CRS <b>324°</b>	Rwy Idg TDZE Apt Elev	<b>3600</b> <b>1600</b> <b>1604</b>
----------------------------------------	------------------------	-----------------------------	-------------------------------------------

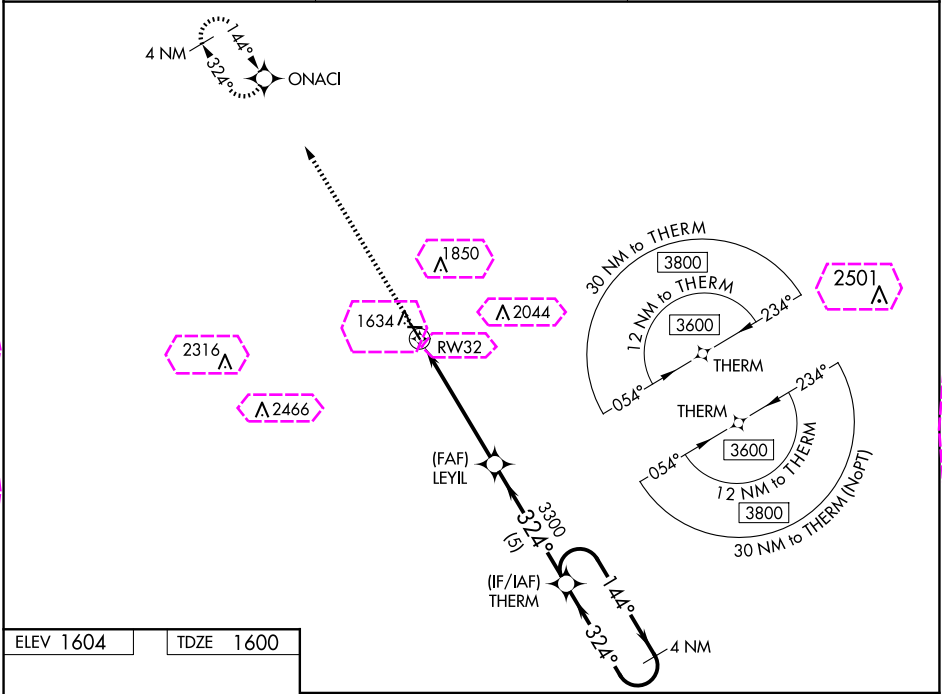
# RNAV (GPS) RWY 32

EDGELEY MUNI (51D)

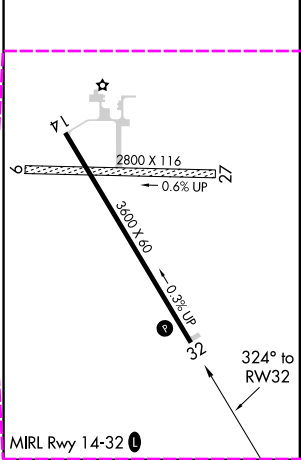
**NA** Baro-VNAV NA. Use Jamestown altimeter setting; when not received, use Oakes altimeter setting and increase all DA 10 feet and all MDA 20 feet; increase LNAV/VNAV all Cats visibility  $\frac{1}{8}$  mile. DME/DME RNP-0.3 NA. Procedure NA at night. Circling NA to Rwys 9 and 27.

MISSED APPROACH: Climb to 3600 direct ONACI and hold.

JMS ASOS <b>118.425</b>	MINNEAPOLIS CENTER <b>124.2 270.3</b>	UNICOM <b>122.8 (CTAF)</b>
----------------------------	------------------------------------------	-------------------------------



ELEV 1604	TDZE 1600
-----------	-----------



3600	ONACI	VGSI and RNAV glidepath not coincident (VGSI Angle 3.00/TCH 27).			
		LEVIL	THERM	4 NM Holding Pattern	
		3300	3300	144° → 3600 ← 324°	
		5.2 NM		5 NM	
CATEGORY	A	B	C	D	
LPV DA	1895-1	295 (300-1)	NA		
LNAV/VNAV DA	1945-1 $\frac{1}{8}$	345 (400-1 $\frac{1}{8}$ )	NA		
LNAV MDA	2140-1	540 (600-1)	NA		
CIRCLING	2140-1 536 (600-1)	2160-1 556 (600-1)	NA		

EDGELEY, NORTH DAKOTA  
Orig 20AUG15

46°21'N-98°44'W

# RNAV (GPS) RWY 32

EDGELEY MUNI (51D)

NC-1, 10 JUL 2025 to 07 AUG 2025

NC-1, 10 JUL 2025 to 07 AUG 2025

EDGELEY, NORTH DAKOTA

AL-10637 (FAA)

25219

WAAS CH <b>45936</b> <b>W32A</b>	APP CRS <b>324°</b>	Rwy Ldg TDZE Apt Elev	<b>3600</b> <b>1600</b> <b>1604</b>
----------------------------------------	------------------------	-----------------------------	-------------------------------------------

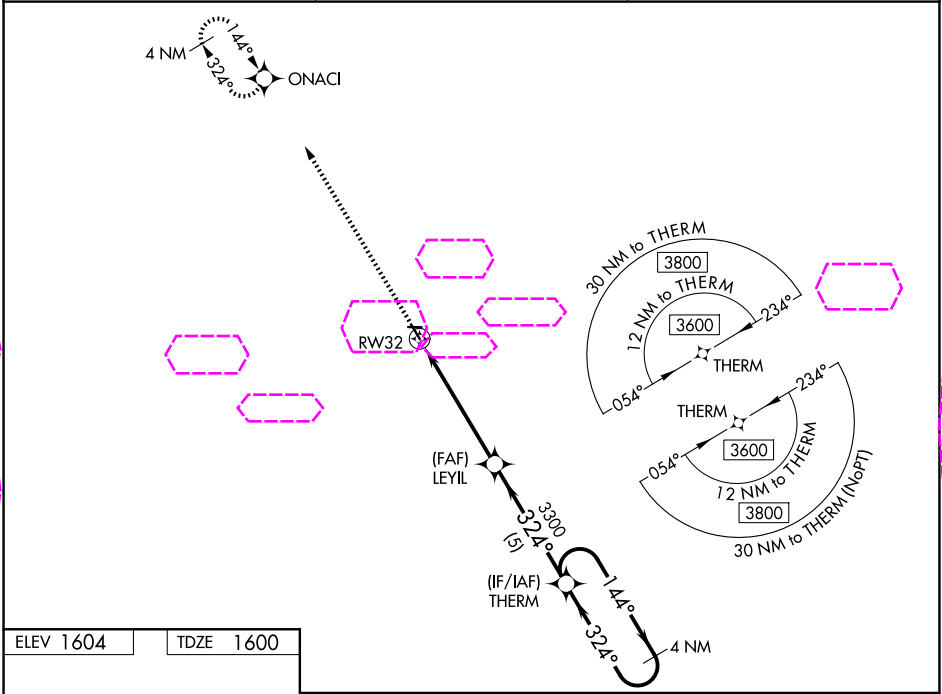
# RNAV (GPS) RWY 32

EDGELEY MUNI (51D)

**NA** Baro-VNAV NA. Use Jamestown altimeter setting; when not received, use Oakes altimeter setting and increase all DA 10 feet and all MDA 20 feet; increase LNAV/VNAV all Cats visibility 1/8 mile. DME/DME RNP-0.3 NA. Procedure NA at night. Circling NA to Rwy 9 and 27.

MISSED APPROACH: Climb to 3600 direct ONACI and hold.

JMS ASOS <b>118.425</b>	MINNEAPOLIS CENTER <b>124.2 270.3</b>	UNICOM <b>122.8 (CTAF)</b>
----------------------------	------------------------------------------	-------------------------------



ELEV 1604	TDZE 1600
-----------	-----------

		3600 ONACI	VGSI and RNAV glidepath not coincident (VGSI Angle 3.00/TCH 27).		THERM	4 NM Holding Pattern
			LEVIL			
			3300			
			324°		144°	3600
			3300			GP 3.00° TCH 40
			5.2 NM	5 NM		
CATEGORY	A	B	C	D		
LPV DA	1895-1	295 (300-1)	NA			
LNAV/VNAV DA	1945-1 1/8	345 (400-1 1/8)	NA			
LNAV MDA	2140-1	540 (600-1)	NA			
CIRCLING	2140-1 536 (600-1)	2160-1 556 (600-1)	NA			

EDGELEY, NORTH DAKOTA  
Orig 20AUG15

46°21'N-98°44'W

# RNAV (GPS) RWY 32

EDGELEY MUNI (51D)

NC-1, 07 AUG 2025 to 04 SEP 2025

NC-1, 07 AUG 2025 to 04 SEP 2025