

EDGELEY, NORTH DAKOTA

AL-10637 (FAA)

25219

WAAS CH 86636 W14A	APP CRS 144°	Rwy Ldg TDZE 1601 Apt Elev 1604
--	------------------------	---

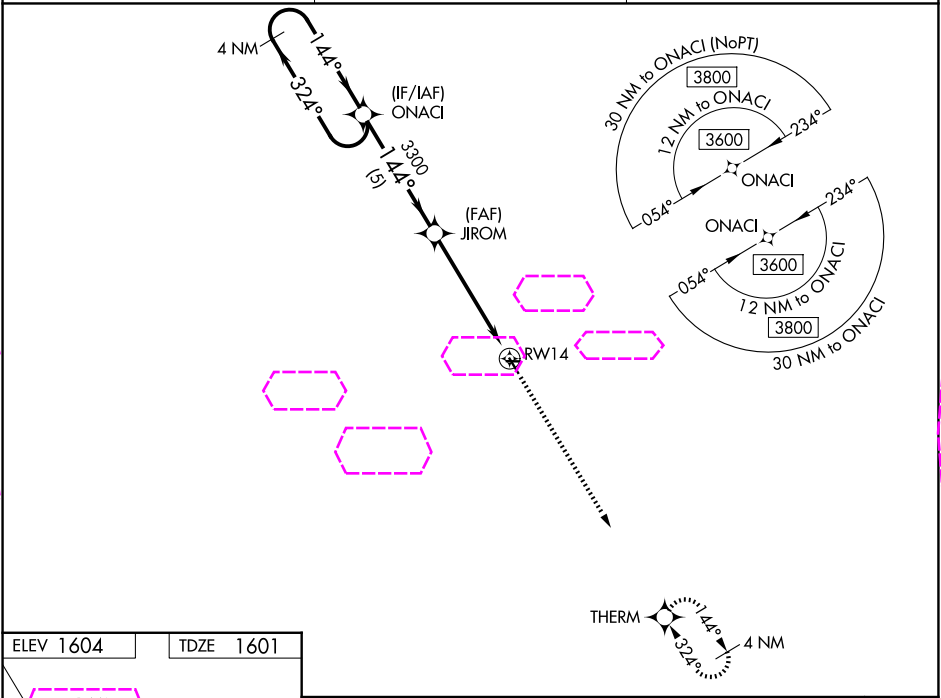
RNAV (GPS) RWY 14

EDGELEY MUNI (51D)

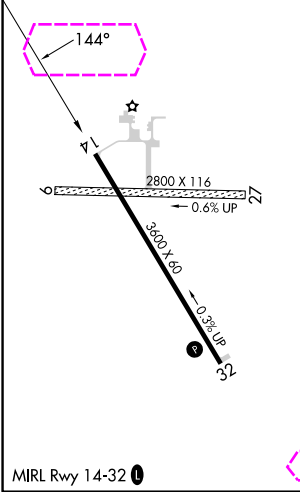
Baro-VNAV NA. Use Jamestown altimeter setting; when not received, use Oakes altimeter setting and increase all DA 10 feet and all MDA 20 feet; increase LPV and LNAV/VNAV all Cals visibility $\frac{1}{8}$ mile. DME/DME RNP-0.3 NA. Procedure NA at night. Circling NA to Rwy 9 and 27.

MISSED APPROACH: Climb to 3600 direct THERM and hold.

JMS ASOS 118.425	MINNEAPOLIS CENTER 124.2 270.3	UNICOM 122.8 (CTAF) 0
----------------------------	--	---------------------------------



ELEV 1604	TDZE 1601
-----------	-----------



VGSi and RNAV glidepath not coincident.				3600	THERM
4 NM Holding Pattern				ONACI	JIROM
3600 ← 324° 144° →				3300	RW14
GP 3.00° TCH 40				5 NM	5.2 NM
CATEGORY	A	B	C	D	
LPV DA	1946-1 $\frac{1}{8}$	345 (400-1 $\frac{1}{8}$)	NA		
LNAV/VNAV DA	1946-1 $\frac{1}{8}$	345 (400-1 $\frac{1}{8}$)	NA		
LNAV MDA	2200-1	599 (600-1)	NA		
CIRCLING	2200-1	596 (600-1)	NA		

NC-1, 07 AUG 2025 to 04 SEP 2025

NC-1, 07 AUG 2025 to 04 SEP 2025