

ONEONTA, ALABAMA

AL-10636 (FAA)

25107

| | | |
|---------|----------|------|
| APP CRS | Rwy Idg | 4098 |
| 058° | TDZE | 1121 |
| | Apt Elev | 1125 |

RNAV (GPS) RWY 6

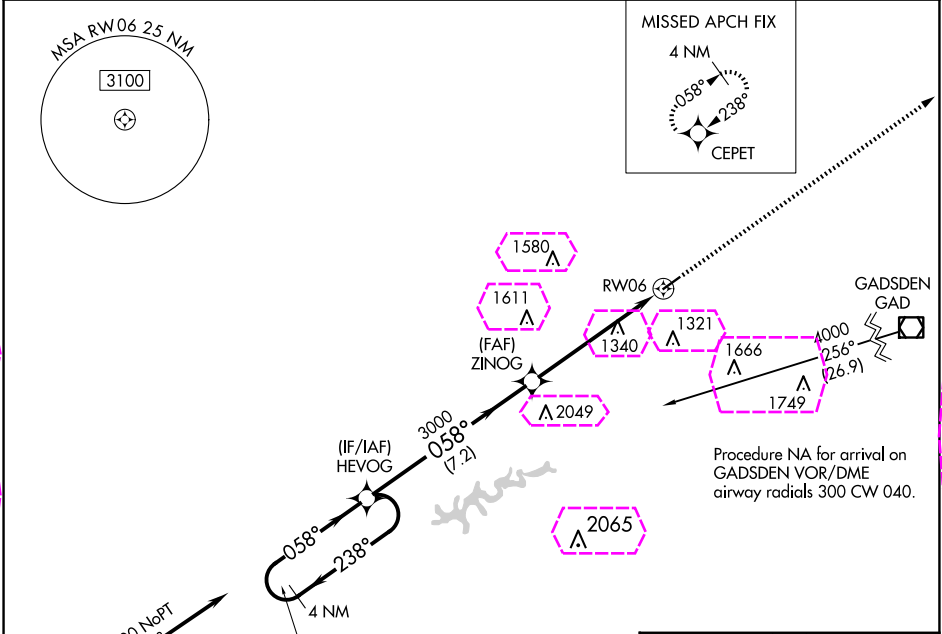
ROBBINS FLD (20A)

RNP APCH.

▼ Procedure NA at night. Use Albertville Rgnl/Thomas J Brumlik Fld altimeter setting, when not received, use Northeast Alabama Rgnl altimeter setting and increase all MDAs 60 feet, increase LNAV Cat C ½ SM. Rwy 6 helicopter visibility reduction below 1 SM NA.

▲ NA MISSED APPROACH: Climb to 4000 direct CEPET and hold.

| | | |
|-------------------------|-------------------------------------|--------------------------|
| BFZ AWOS-3PT 119.575 | BIRMINGHAM APP CON 125.45 279.65 | UNICOM 122.8 (CTAF) 0 |
|-------------------------|-------------------------------------|--------------------------|



| | | | | | |
|-----------|--|---|--|-----------|--|
| ELEV 1125 | | D | | TDZE 1121 | |
|-----------|--|---|--|-----------|--|

4 NM Holding Pattern HEVOG

Visual Segment - Obstacles.

4000 CEPET

6000 238°
4000 058°

HEVOG

058°

ZINOG

3000

RW06

7.2 NM 5.8 NM

| | | | | |
|----------|--------------------|--------------------|--------------------|----|
| CATEGORY | A | B | C | D |
| LNAV MDA | 1760-1 639 (700-1) | 1760-1 639 (700-1) | 1760-1 639 (700-1) | NA |
| CIRCLING | 1760-1 635 (700-1) | 1800-2 675 (700-2) | 1800-2 675 (700-2) | NA |

MIRL Rwy 6-24 0

SE-4, 10 JUL 2025 to 07 AUG 2025

SE-4, 10 JUL 2025 to 07 AUG 2025

SE-4, 07 AUG 2025 to 04 SEP 2025