

ONEONTA, ALABAMA

AL-10636 (FAA)

25107

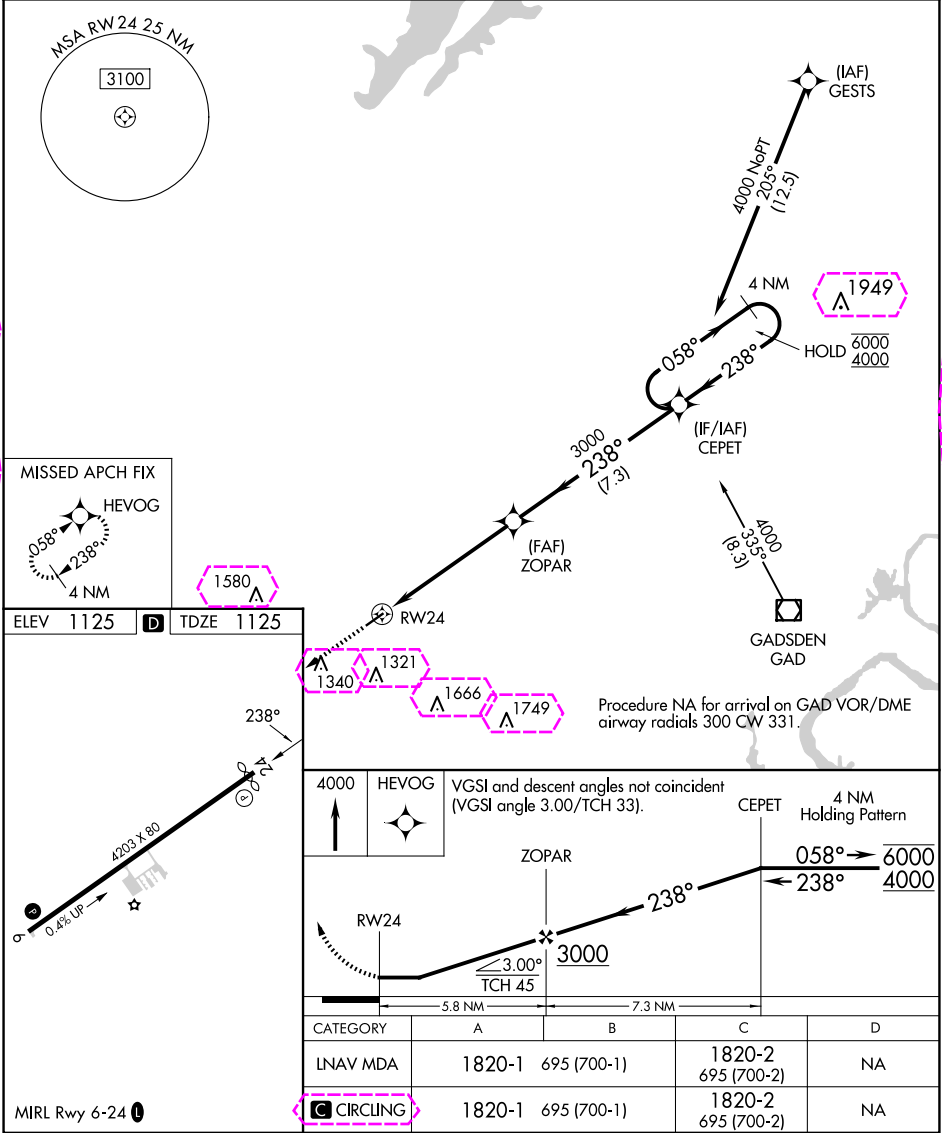
APP CRS	Rwy Idg	4098
238°	TDZE	1125
	Apt Elev	1125

RNAV (GPS) RWY 24

ROBBINS FLD (20A)

RNP APCH-GPS.	Procedure NA at night. Rwy 24 helicopter visibility reduction below 1 SM NA. Use BFZ altimeter setting, when not received, use GAD altimeter setting and increase all MDA 60 feet and increase LNAV Cat B visibility ¼ SM, Cat C Circling visibility ¼ SM.	MISSED APPROACH: Climb to 4000 direct HEVOG and hold.
---------------	--	---

BFZ AWOS-3PT 119.575	BIRMINGHAM APP CON 125.45 279.65	UNICOM 122.8 (CTAF) 0
-------------------------	-------------------------------------	--------------------------



SE-4, 10 JUL 2025 to 07 AUG 2025

SE-4, 10 JUL 2025 to 07 AUG 2025

ONEONTA, ALABAMA
Orig-C 17APR25

33°58'N-86°23'W

ROBBINS FLD (20A)

RNAV (GPS) RWY 24

ONEONTA, ALABAMA

AL-10636 (FAA)

25219

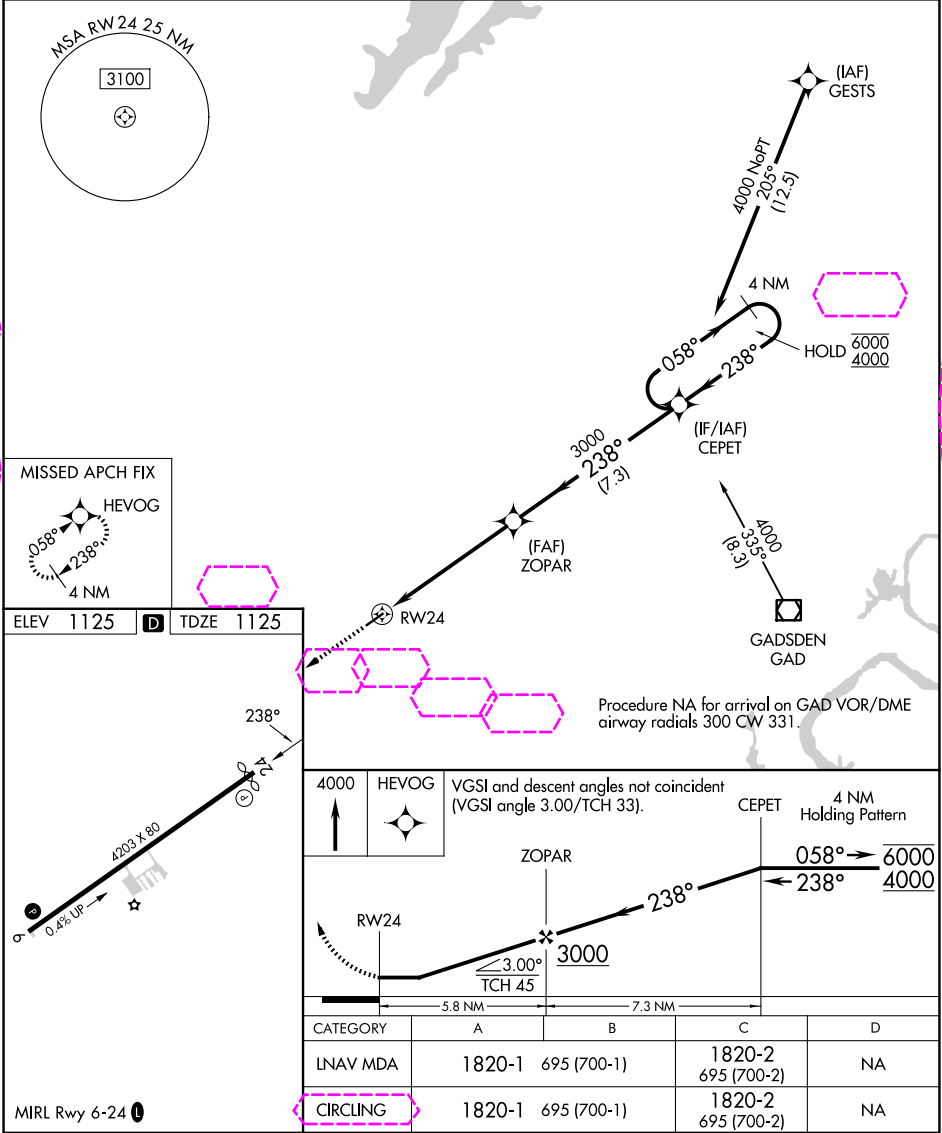
APP CRS	Rwy Ldg	4098
238°	TDZE	1125
	Apt Elev	1125

RNAV (GPS) RWY 24

ROBBINS FLD (20A)

RNP APCH-GPS.	Procedure NA at night. Rwy 24 helicopter visibility reduction below 1 SM NA. Use BFZ altimeter setting, when not received, use GAD altimeter setting and increase all MDA 60 feet and increase LNAV Cat B visibility ¼ SM, Cat C Circling visibility ¼ SM.	MISSED APPROACH: Climb to 4000 direct HEVOG and hold.
---------------	---	---

BFZ AWOS-3PT 119.575	BIRMINGHAM APP CON 125.45 279.65	UNICOM 122.8 (CTAF) 0
-------------------------	-------------------------------------	--------------------------



MIRL Rwy 6-24 0	ONEONTA, ALABAMA Orig-C 17APR25	33°58'N-86°23'W	ROBBINS FLD (20A) RNAV (GPS) RWY 24
-----------------	------------------------------------	-----------------	--