

BRUNSWICK, MAINE


AL-10605 (FAA)

24081

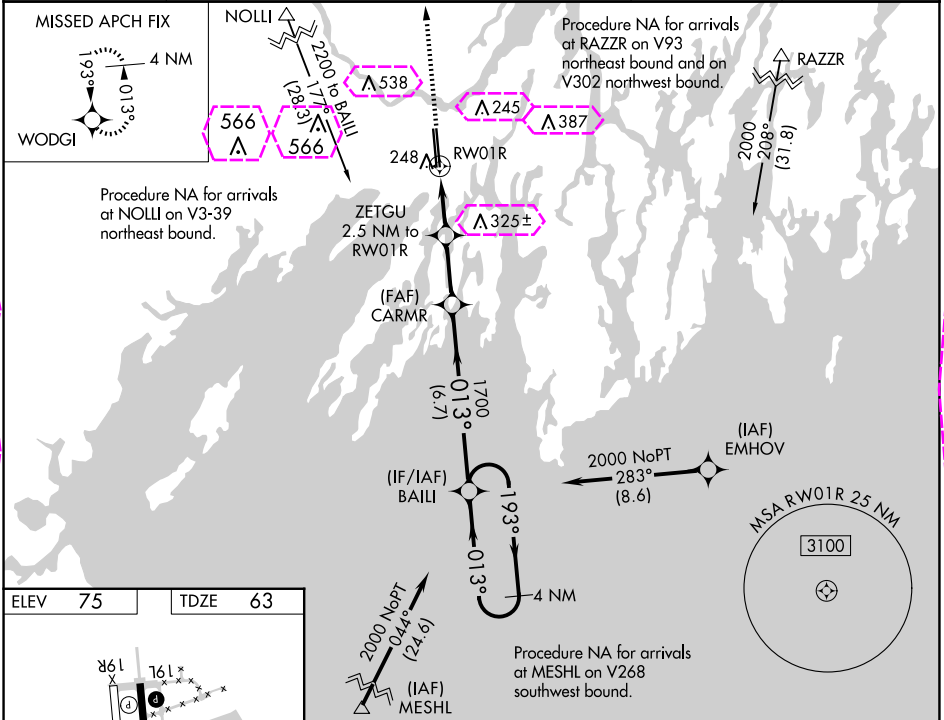
WAAS CH 69415 W01A	APP CRS 013°	Rwy Idg 8000 TDZE 63 Apt Elev 75
--	------------------------	---

RNAV (GPS) RWY 1R

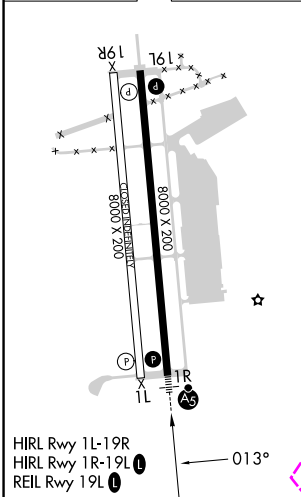
BRUNSWICK EXEC (BXM)

<p>▼ Baro-VNAV NA when using Portland altimeter setting. For uncompensated Baro-VNAV systems, LNAV/VNAV NA below -15°C (5°F) or above 54°C (130°F). DME/DME RNP-0.3 NA. VDP NA when using Portland altimeter setting. When local altimeter setting not received, use Portland altimeter setting and increase LPV DA to 314, LNAV/VNAV DA to 461 and all LNAV/VNAV visibilities ¼ SM; increase all MDA 60 feet and LNAV Cat C/D visibilities ¼ SM and Circling Cat C/D visibilities ¼ SM. For inop ALS when using Portland altimeter setting, increase LNAV Cat C/D visibility to 1 ½ SM.</p>	<p>MALS R</p> 	<p>MISSED APPROACH: Climb to 2500 direct WODGI and hold.</p>
--	---	--

AWOS-3PT 134.875	PORTLAND APP CON ★ (112°-292°) 119.75 269.35 (293°-111°) 120.4 299.2	CLNC DEL 123.65	UNICOM 122.725 (CTAF) 0
----------------------------	---	---------------------------	--



ELEV 75	TDZE 63
---------	---------



2500	WODGI	ZETGU 2.5 NM to RW01R	CARMR	BAILI	4 NM Holding Pattern
* LNAV only.		RW01R *1.2 NM to RW01R	1700	1700	193° 013° 2000
		*900			GP 3.00° TCH 50
		1.2 NM	1.3 NM	2.5 NM	6.7 NM
CATEGORY	A	B	C	D	
LPV DA		263-½	200 (200-½)		
LNAV/VNAV DA		410-⅝	347 (400-⅝)		
LNAV MDA	500-½	437 (500-½)	500-¾	437 (500-¾)	
CIRCLING	560-1	485 (500-1)	840-2¼ 765 (800-2¼)	840-2½ 765 (800-2½)	

BRUNSWICK, MAINE

Amdr 2 10NOV16

43°54'-69°56'W

BRUNSWICK EXEC (BXM)

RNAV (GPS) RWY 1R

NE-1, 10 JUL 2025 to 07 AUG 2025

NE-1, 10 JUL 2025 to 07 AUG 2025

BRUNSWICK, MAINE

AL-10605 (FAA)

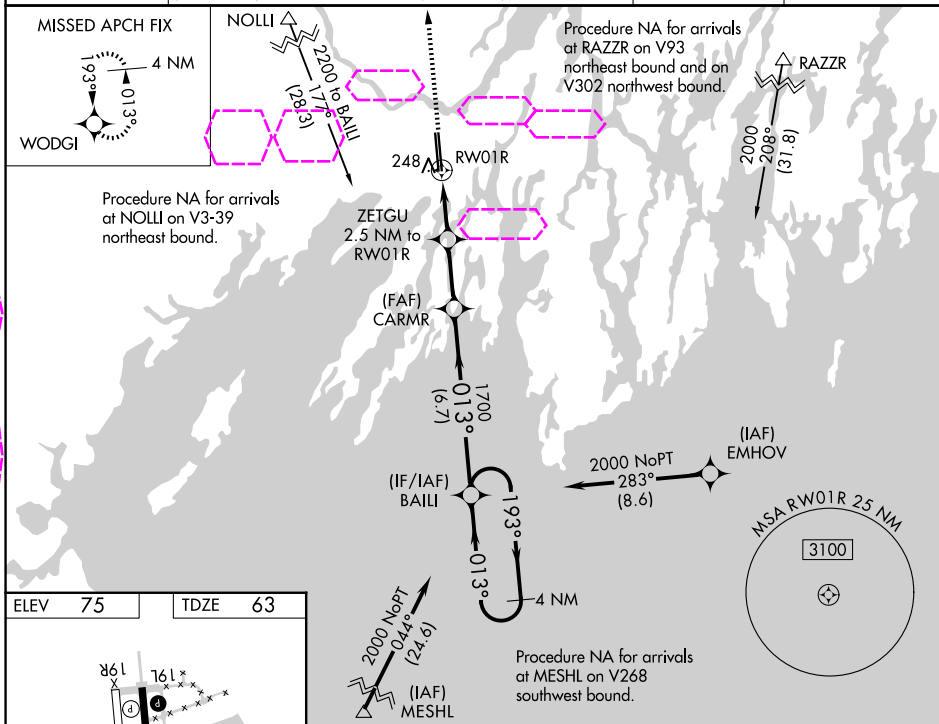
25219

WAAS CH 69415 W01A	APP CRS 013°	Rwy Ldg TDZE Apt Elev	8000 63 75
--	------------------------	-----------------------------	---------------------------------------

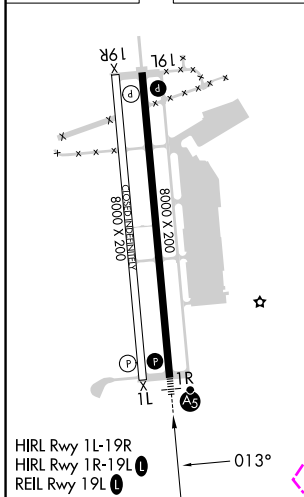
RNAV (GPS) RWY 1R

BRUNSWICK EXEC(BXM)

<div><div><div></div><div></div><div></div></div><div></div></div>	Baro-VNAV NA when using Portland altimeter setting. For uncompensated Baro-VNAV systems, LNAV/VNAV NA below -15°C (5°F) or above 54°C (130°F). DME/DME RNP-0.3 NA. VDP NA when using Portland altimeter setting. When local altimeter setting not received, use Portland altimeter setting and increase LPV DA to 314, LNAV/VNAV DA to 461 and all LNAV/VNAV visibilities ¼ SM; increase all MDA 60 feet and LNAV Cat C/D visibilities ¼ SM and Circling Cat C/D visibilities ¼ SM. For inop ALS when using Portland altimeter setting, increase LNAV Cat C/D visibility to 1 ½ SM.			<div><div><div></div><div></div><div></div></div><div></div></div>	MISSED APPROACH: Climb to 2500 direct WODGI and hold.
	AWOS-3PT 134.875	PORTLAND APP CON ★ (112°-292°) 119.75 269.35 (293°-111°) 120.4 299.2		CLNC DEL 123.65	UNICOM 122.725 (CTAF) <div></div>



ELEV	75		TDZE	63
------	----	--	------	----



CATEGORY	A	B	C	D
LPV DA	263-½	200 (200-½)		
LNNAV/ VNAV DA	410-5/8	347 (400-5/8)		
LNNAV MDA	500-½	437 (500-½)	500-¾	437 (500-¾)
CIRCLING	560-1	485 (500-1)	840-2¼ 765 (800-2¼)	840-2½ 765 (800-2½)

BRUNSWICK, MAINE

Amdt 2 10NOV16

43°54'-69°56'W

BRUNSWICK EXEC(BXM)

RNAV (GPS) RWY 1R

NE-1, 07 AUG 2025 to 04 SEP 2025