

WAAS CH 72815 W19A	APP CRS 193°	Rwy Idg TDZE Apt Elev	8000 74 75
--	------------------------	-----------------------------	---------------------------------------

RNAV (GPS) RWY 19L
BRUNSWICK EXEC(BXM)

RNP APCH - GPS.

V For uncompensated Baro-VNAV systems, LNAV/VNAV NA below -15°C or above 43°C. Inop table does not apply to LPV all Cats. Rwy 19L helicopter visibility reduction below $\frac{3}{4}$ SM NA. Baro-VNAV and VDP NA with Portland altimeter setting. When local altimeter setting not received, use Portland altimeter setting: increase LPV DA to 382 feet and all visibilities $\frac{1}{4}$ SM; increase LNAV/VNAV DA to 410 feet and all visibilities $\frac{1}{4}$ SM; increase all MDA 60 feet and LNAV and Circling Cats C/D $\frac{1}{4}$ SM.

MISSED APPROACH:
Climb to 2000 direct
BAIL and hold.

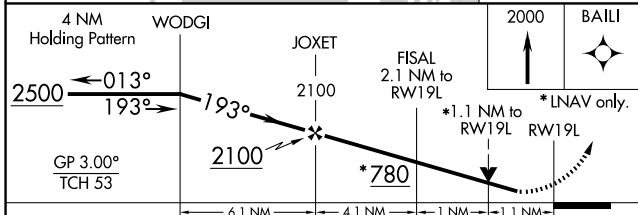
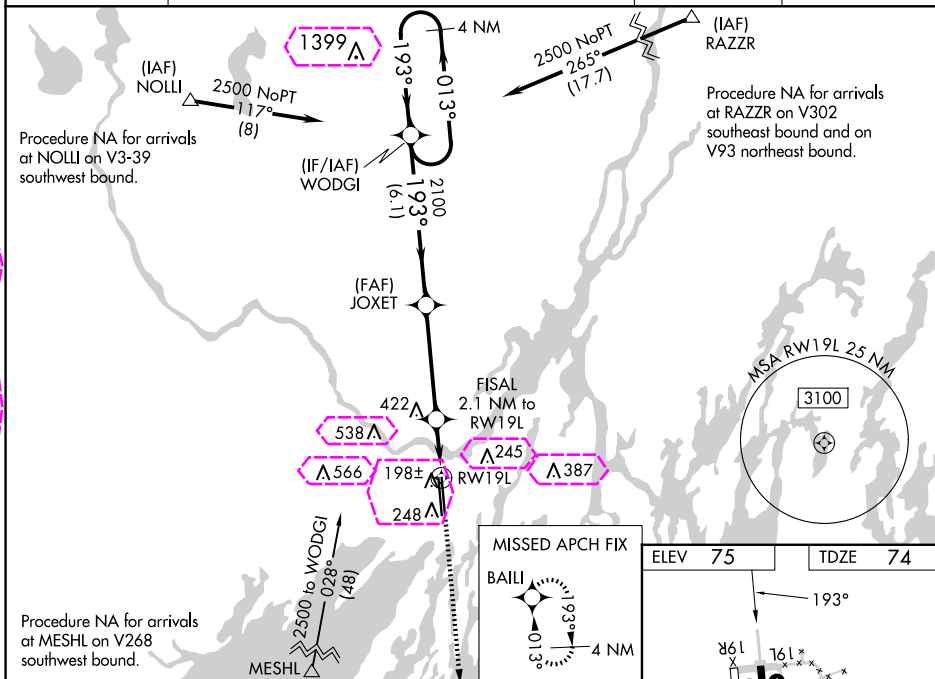
AWOS-3PT
134.875

PORTLAND APP CON ★

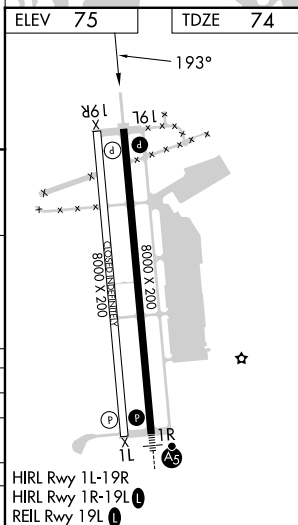
(112°-292°) **119.75 269.35** (293°-111°) **120.4 299.2**

CLNC DE
123.65

UNICOM
122.725 (CTAF) **L**



CATEGORY	A	B	C	D
LPV DA		331- $\frac{3}{4}$	257 (300- $\frac{3}{4}$)	
INAV/ VNAV DA		359- $\frac{7}{8}$	285 (300- $\frac{7}{8}$)	
INAV MDA	460-1	386 (400-1)	460-1 $\frac{1}{8}$	386 (400-1 $\frac{1}{8}$)
CIRCLING	560-1	485 (500-1)	840-2 $\frac{1}{4}$ 765 (800-2 $\frac{1}{4}$)	840-2 $\frac{1}{2}$ 765 (800-2 $\frac{1}{2}$)

BRUNSWICK, MAINE
Amdt 1C 06OCT22

43°54'-69°56'W

BRUNSWICK EXEC(BXM)

RNAV (GPS) RWY 19L

NE-1, 10 JUL 2025 to 07 AUG 2025

NE-1, 10 JUL 2025 to 07 AUG 2025

BRUNSWICK, MAINE

AL-10605 (FAA)

25219

WAAS CH 72815 W19A	APP CRS 193°	Rwy Ldg TDZE 74 Apt Elev 75	8000
--	------------------------	---	-------------

RNAV (GPS) RWY 19L

BRUNSWICK EXEC (BXM)

RNP APCH - GPS.

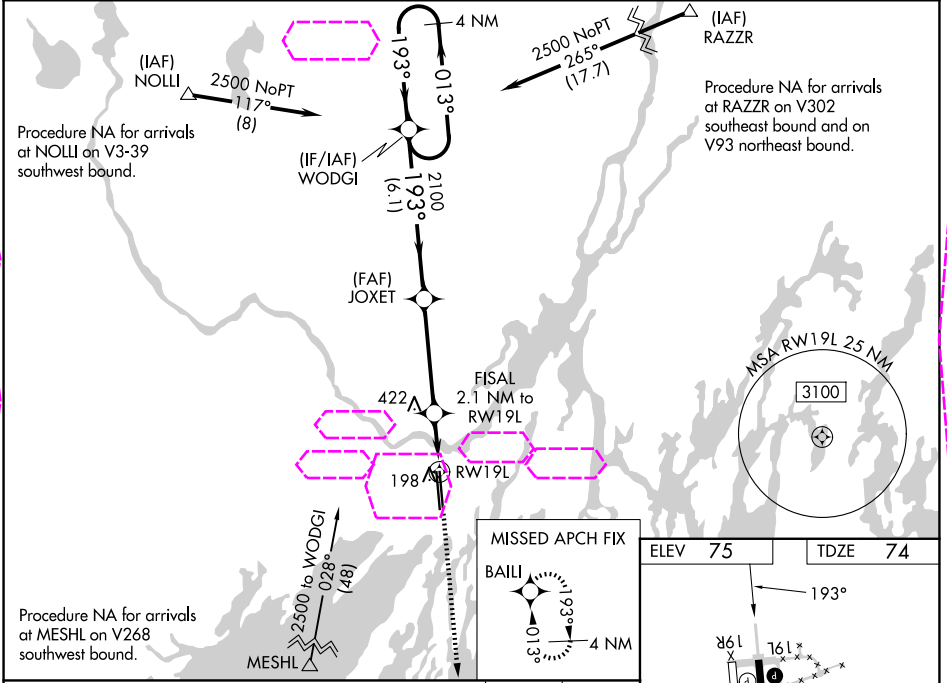
▼

▲ NA

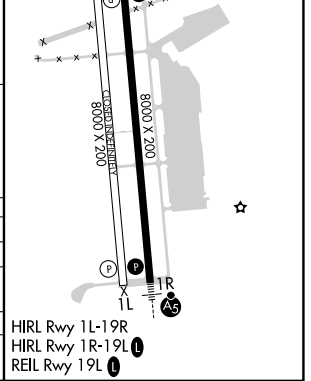
For uncompensated Baro-VNAV systems, LNAV/VNAV NA below -1.5°C or above 43°C. Inop table does not apply to LPV all Cats. Rwy 19L helicopter visibility reduction below ¾ SM NA. Baro-VNAV and VDP NA with Portland altimeter setting. When local altimeter setting not received, use Portland altimeter setting: increase LPV DA to 382 feet and all visibilities ¼ SM; increase LNAV/VNAV DA to 410 feet and all visibilities ¼ SM; increase all MDA 60 feet and LNAV and Circling Cats C/D ¼ SM.

MISSED APPROACH:
Climb to 2000 direct BAILI and hold.

AWOS-3PT 134.875	PORTLAND APP CON ★ (112°-292°) 119.75 269.35 (293°-111°) 120.4 299.2	CLNC DEL 123.65	UNICOM 122.725 (CTAF) 0
----------------------------	---	---------------------------	--



4 NM Holding Pattern		WODGI		JOXET		FISAL 2.1 NM to RW19L		2000 ↑		BAILI ✦	
2500 ← 013° 193° →		193°		2100		* 780		* 1.1 NM to RW19L		* LNAV only.	
GP 3.00° TCH 53								* 1.1 NM to RW19L		* 1.1 NM to RW19L	
		6.1 NM		4.1 NM		1 NM		1.1 NM			
CATEGORY		A		B		C		D			
LPV DA				331-¾		257 (300-¾)					
LNAV/VNAV DA				359-⅞		285 (300-⅞)					
LNAV MDA		460-1		386 (400-1)		460-1⅛		386 (400-1⅛)			
CIRCLING		560-1		485 (500-1)		840-2¼ 765 (800-2¼)		840-2½ 765 (800-2½)			



BRUNSWICK, MAINE
Amdt 1C 06OCT22

43°54'-69°56'W

BRUNSWICK EXEC (BXM)

RNAV (GPS) RWY 19L

NE-1, 07 AUG 2025 to 04 SEP 2025

NE-1, 07 AUG 2025 to 04 SEP 2025