

BRUNSWICK, MAINE

AL-10605 (FAA)

24081

LOC/DME I-BXM <b>109.3</b> Chan <b>30</b>	APP CRS <b>012°</b>	Rwy Idg <b>8000</b> TDZE <b>63</b> Apt Elev <b>75</b>
---	------------------------	---

# ILS or LOC RWY 1R

BRUNSWICK EXEC (BXM)

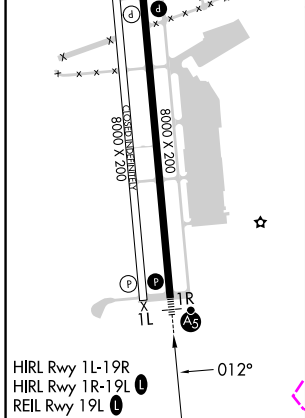
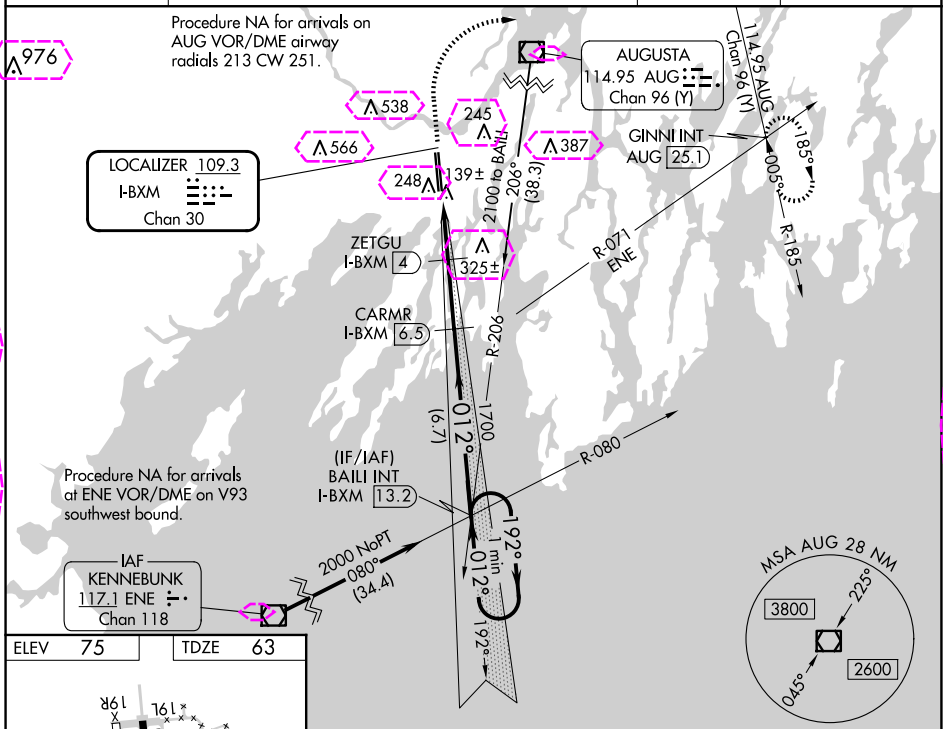
**NA**

DME required. VDP NA when using Portland altimeter setting. When local altimeter setting not received, use Portland altimeter setting and increase S-ILS 1R DA to 314; increase all MDA 60 feet; increase S-LOC 1R Cats C/D visibilities 1/2 SM and Circling Cat C/D visibilities 1/4 SM.

**MALSR**

**MISSED APPROACH:** Climb to 600 then climbing right turn to 3000 on heading 080° and AUG VOR/DME R-185 to GINNI INT/AUG 25.1 DME and hold.

AWOS-3PT <b>134.875</b>	PORTLAND APP CON ★ (112°-292°) <b>119.75 269.35</b> (293°-111°) <b>120.4 299.2</b>	CINC DEL <b>123.65</b>	UNICOM <b>122.725</b> (CTAF) <b>0</b>
----------------------------	---	---------------------------	--



600	3000	AUG R-185	GINNI INT	CARMR I-BXM 6.5	BAILI INT I-BXM 13.2	One Minute Holding Pattern
* LOC only.						
* I-BXM 1.5						
* I-BXM 2.4						
* I-BXM 4						
* I-BXM 6.5						
* I-BXM 13.2						
* I-BXM 25.1						
* I-BXM 3000						
* I-BXM 3800						
* I-BXM 4000						
* I-BXM 4500						
* I-BXM 5000						
* I-BXM 5500						
* I-BXM 6000						
* I-BXM 6500						
* I-BXM 7000						
* I-BXM 7500						
* I-BXM 8000						
* I-BXM 8500						
* I-BXM 9000						
* I-BXM 9500						
* I-BXM 10000						
* I-BXM 10500						
* I-BXM 11000						
* I-BXM 11500						
* I-BXM 12000						
* I-BXM 12500						
* I-BXM 13000						
* I-BXM 13500						
* I-BXM 14000						
* I-BXM 14500						
* I-BXM 15000						
* I-BXM 15500						
* I-BXM 16000						
* I-BXM 16500						
* I-BXM 17000						
* I-BXM 17500						
* I-BXM 18000						
* I-BXM 18500						
* I-BXM 19000						
* I-BXM 19500						
* I-BXM 20000						
* I-BXM 20500						
* I-BXM 21000						
* I-BXM 21500						
* I-BXM 22000						
* I-BXM 22500						
* I-BXM 23000						
* I-BXM 23500						
* I-BXM 24000						
* I-BXM 24500						
* I-BXM 25000						
* I-BXM 25500						
* I-BXM 26000						
* I-BXM 26500						
* I-BXM 27000						
* I-BXM 27500						
* I-BXM 28000						
* I-BXM 28500						
* I-BXM 29000						
* I-BXM 29500						
* I-BXM 30000						
* I-BXM 30500						
* I-BXM 31000						
* I-BXM 31500						
* I-BXM 32000						
* I-BXM 32500						
* I-BXM 33000						
* I-BXM 33500						
* I-BXM 34000						
* I-BXM 34500						
* I-BXM 35000						
* I-BXM 35500						
* I-BXM 36000						
* I-BXM 36500						
* I-BXM 37000						
* I-BXM 37500						
* I-BXM 38000						
* I-BXM 38500						
* I-BXM 39000						
* I-BXM 39500						
* I-BXM 40000						
* I-BXM 40500						
* I-BXM 41000						
* I-BXM 41500						
* I-BXM 42000						
* I-BXM 42500						
* I-BXM 43000						
* I-BXM 43500						
* I-BXM 44000						
* I-BXM 44500						
* I-BXM 45000						
* I-BXM 45500						
* I-BXM 46000						
* I-BXM 46500						
* I-BXM 47000						
* I-BXM 47500						
* I-BXM 48000						
* I-BXM 48500						
* I-BXM 49000						
* I-BXM 49500						
* I-BXM 50000						
* I-BXM 50500						
* I-BXM 51000						
* I-BXM 51500						
* I-BXM 52000						
* I-BXM 52500						
* I-BXM 53000						
* I-BXM 53500						
* I-BXM 54000						
* I-BXM 54500						
* I-BXM 55000						
* I-BXM 55500						
* I-BXM 56000						
* I-BXM 56500						
* I-BXM 57000						
* I-BXM 57500						
* I-BXM 58000						
* I-BXM 58500						
* I-BXM 59000						
* I-BXM 59500						
* I-BXM 60000						
* I-BXM 60500						
* I-BXM 61000						
* I-BXM 61500						
* I-BXM 62000						
* I-BXM 62500						
* I-BXM 63000						
* I-BXM 63500						
* I-BXM 64000						
* I-BXM 64500						
* I-BXM 65000						
* I-BXM 65500						
* I-BXM 66000						
* I-BXM 66500						
* I-BXM 67000						
* I-BXM 67500						
* I-BXM 68000						
* I-BXM 68500						
* I-BXM 69000						
* I-BXM 69500						
* I-BXM 70000						
* I-BXM 70500						
* I-BXM 71000						
* I-BXM 71500						
* I-BXM 72000						
* I-BXM 72500						
* I-BXM 73000						
* I-BXM 73500						
* I-BXM 74000						
* I-BXM 74500						
* I-BXM 75000						
* I-BXM 75500						
* I-BXM 76000						
* I-BXM 76500						
* I-BXM 77000						
* I-BXM 77500						
* I-BXM 78000						
* I-BXM 78500						
* I-BXM 79000						
* I-BXM 79500						
* I-BXM 80000						
* I-BXM 80500						
* I-BXM 81000						
* I-BXM 81500						
* I-BXM 82000						
* I-BXM 82500						
* I-BXM 83000						
* I-BXM 83500						
* I-BXM 84000						
* I-BXM 84500						
* I-BXM 85000						
* I-BXM 85500						
* I-BXM 86000						
* I-BXM 86500						
* I-BXM 87000						
* I-BXM 87500						
* I-BXM 88000						
* I-BXM 88500						
* I-BXM 89000						
* I-BXM 89500						
* I-BXM 90000						
* I-BXM 90500						
* I-BXM 91000						
* I-BXM 91500						
* I-BXM 92000						
* I-BXM 92500						
* I-BXM 93000						
* I-BXM 93500						
* I-BXM 94000						
* I-BXM 94500						
* I-BXM 95000						
* I-BXM 95500						
* I-BXM 96000						
* I-BXM 96500						
* I-BXM 97000						
* I-BXM 97500						
* I-BXM 98000						
* I-BXM 98500						
* I-BXM 99000						
* I-BXM 99500						
* I-BXM 100000						

BRUNSWICK, MAINE  
Amdt 1 10NOV16

43°54'-69°56'W

# ILS or LOC RWY 1R

BRUNSWICK, MAINE

AL-10605 (FAA)

25219

LOC/DME I-BXM <b>109.3</b> Chan <b>30</b>	APP CRS <b>012°</b>	Rwy Ldg <b>8000</b> TDZE <b>63</b> Apt Elev <b>75</b>
---	------------------------	---

# ILS or LOC RWY 1R

BRUNSWICK EXEC (BXM)

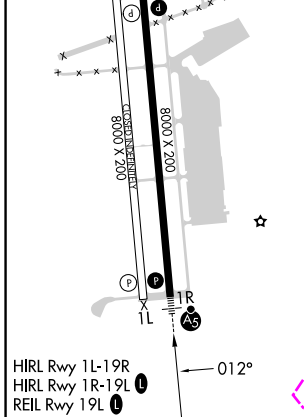
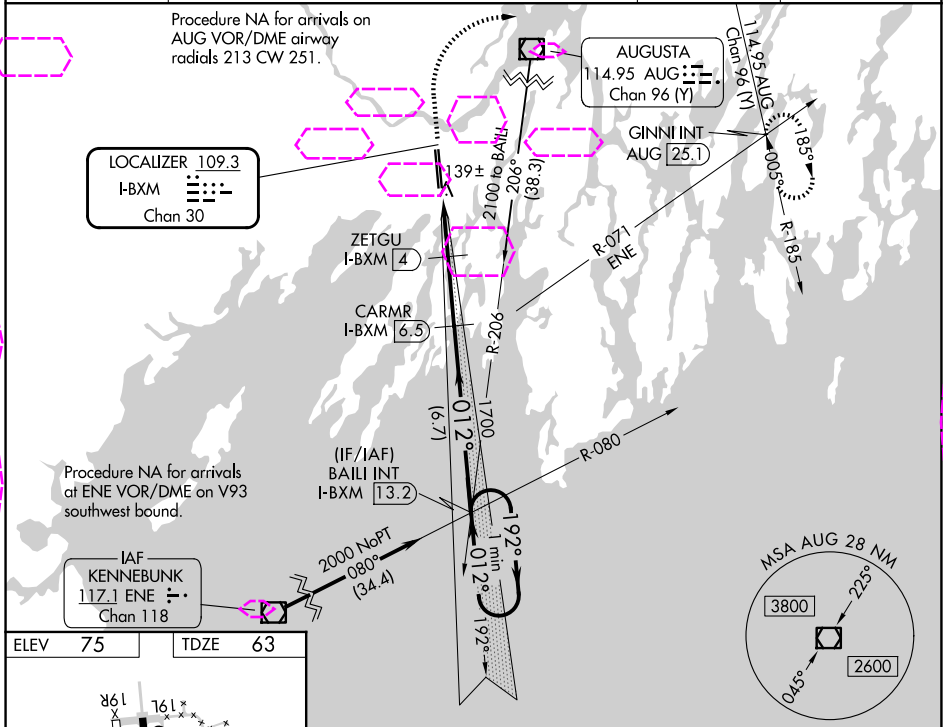
**NA**

DME required. VDP NA when using Portland altimeter setting. When local altimeter setting not received, use Portland altimeter setting and increase S-ILS 1R DA to 314; increase all MDA 60 feet; increase S-LOC 1R Cats C/D visibilities  $\frac{1}{2}$  SM and Circling Cat C/D visibilities  $\frac{1}{4}$  SM.

**MALSR**

**MISSED APPROACH:** Climb to 600 then climbing right turn to 3000 on heading 080° and AUG VOR/DME R-185 to GINNI INT/AUG 25.1 DME and hold.

AWOS-3PT <b>134.875</b>	PORTLAND APP CON ★ (112°-292°) <b>119.75 269.35</b> (293°-111°) <b>120.4 299.2</b>	CINC DEL <b>123.65</b>	UNICOM <b>122.725</b> (CTAF) <b>0</b>
----------------------------	---	---------------------------	--



600	3000	AUG R-185	GINNI INT	CARMR I-BXM 6.5	BAILI INT I-BXM 13.2	One Minute Holding Pattern
<b>* LOC only.</b>						
<b>* I-BXM 2.4</b>						
<b>I-BXM 1.5</b>						
<b>900*</b>						
<b>1700</b>						
<b>192°</b>						
<b>012°</b>						
<b>2000</b>						
<b>GS 3.00°</b>						
<b>TCH 50</b>						
CATEGORY	A	B	C	D		
S-ILS 1R	263- $\frac{1}{2}$		200 (200- $\frac{1}{2}$ )			
S-LOC 1R	400- $\frac{1}{2}$		337 (400- $\frac{1}{2}$ )			
<b>CIRCLING</b>	560-1	485 (500-1)	840-2 $\frac{1}{4}$ 765 (800-2 $\frac{1}{4}$ )	840-2 $\frac{1}{2}$ 765 (800-2 $\frac{1}{2}$ )		

BRUNSWICK, MAINE

Amdt 1 10NOV16

43°54'-69°56'W

# ILS or LOC RWY 1R

NE-1, 07 AUG 2025 to 04 SEP 2025